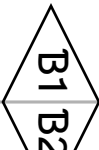
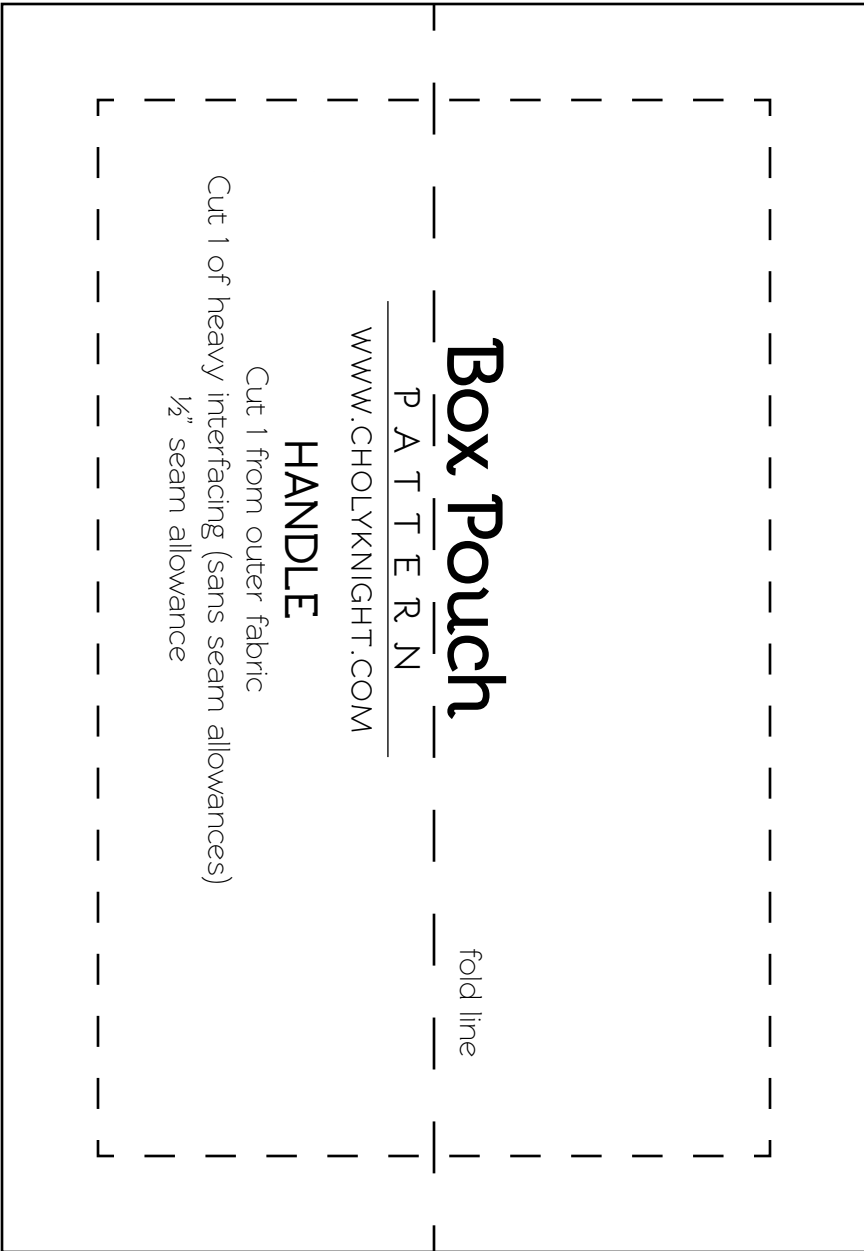
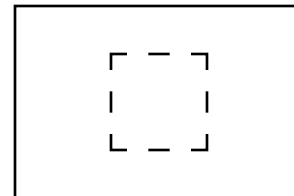




cut on fold





Box Pouch

P A T T E R N

WWW.CHOLYKNIGHT.COM

BOX POUCH INTERFACING

Cut 1 of heavy interfacing

Box Pouch

P A T T E R N

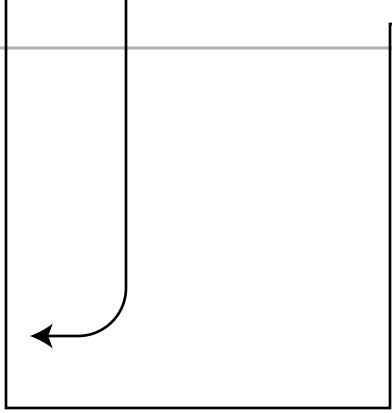
WWW.CHOLYKNIGHT.COM

ZIPPER TABS

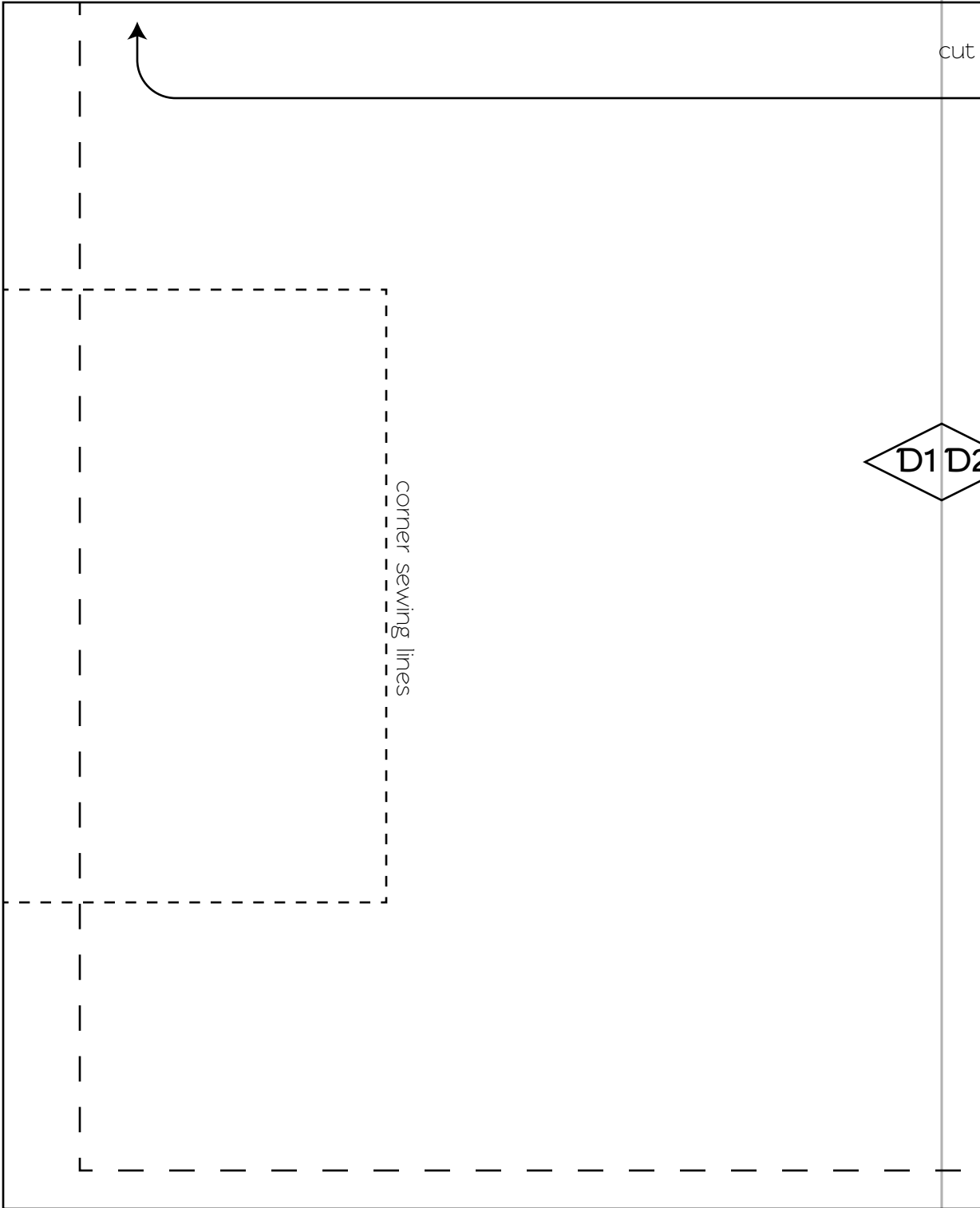
Cut 4 of outer fabric
1/2" seam allowance



B1 B2

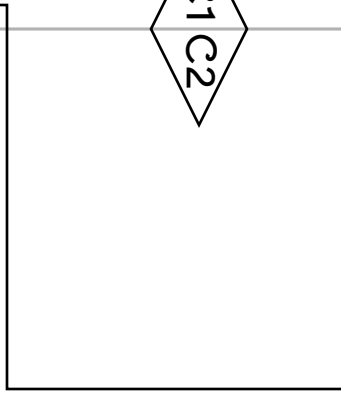


cut



corner sewing lines

D1 D2



cut on fold



Box Pouch

P A T T E R N

WWW.CHOLYKNIGHT.COM

BOX POUCH

Cut 1 on fold of outer fabric

Cut 1 on fold of lining fabric

1/2" seam allowance



corner sewing lines

