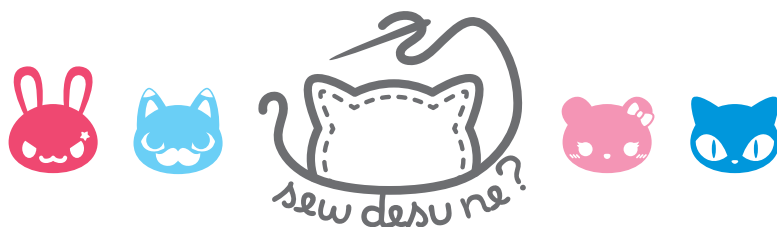


Unicorn Kitty



PILLOW PLUSH

A FREE SEWING PATTERN BY



unicorn kitty pillow plush

A super cute plush that's big and cuddly enough to be a pillow! This simple stuffed cat is sure to warm the heart of any magic-lover with its majestic unicorn features. It includes pretty two-tone bangs, striped tail, spiral horn, and cute front and back paws.

DIFFICULTY:



This plush is pretty simple, though you might have troubles with the smaller details like the hair stripes and the small feet. And the sheer size of the body will take some extra time to fill.

MAKES:

One plush: 13" tall, 9" wide, and 9" long

SKILLS USED:

- Fusible web applique
- Sewing small pieces
- Basting
- Gathering stitch, gathering
- Sewing curves
- Ladder stitch
- Whip stitch

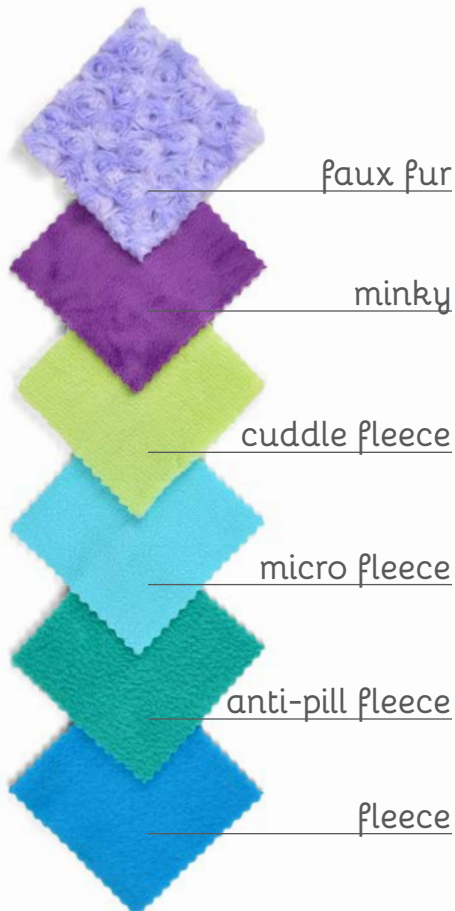


sew desu ne?

| WWW.CHOLYKNIGHT.COM |

materials & tools:

- ½ yd. of fabric for main body
- ¼ yd. of accent fabric for bangs & tail
- 8" x 8" piece of accent fabric for optional hair stripes
- 6" x 6" piece of accent fabric for horn
- 3" x 5" piece of black applique fabric (felt, cotton, etc.) for eyes and optional mouth
- 3" x 3" piece of white applique fabric (felt, cotton, etc.) for eye shines
- 4" x 4" piece of pink applique fabric (felt, cotton, etc.) for paw pads and optional blush marks, nose
- 6" x 6" piece of light or heavy duty fusible web
- sewing thread to match main fabric and applique fabrics
- poly-fil stuffing
- basic sewing tools (sewing machine, scissors, iron, needles, pins, fabric marker, seam ripper)



SUGGESTED FABRICS:

Plush, stretchy fabrics such as fleece or minky are suggested. The variations of fleece and minky mentioned to the left would work well, but really any plushy fabric with a bit of stretch on the cross-wise grain would be well-suited. Stretch fabrics like **FLEECE** or **MINKY** will create a more squat, round shape when stuffed. Non-stretchy fabrics, like **FELT** or **COTTON**, won't stretch when stuffed so the resulting plush will look elongated as shown.

MINKY

VS.

FELT

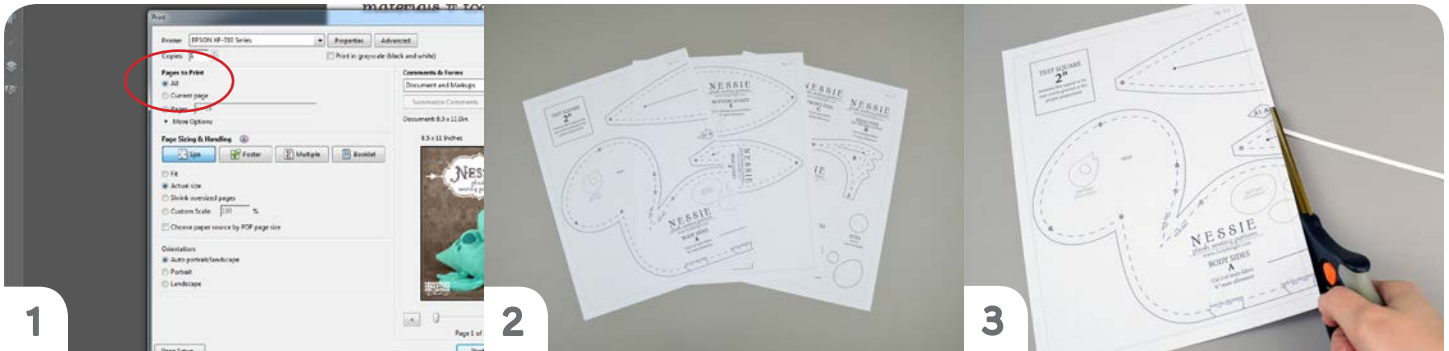


sew desu ne?

| WWW.CHOLYKNIGHT.COM |

printing the pattern:

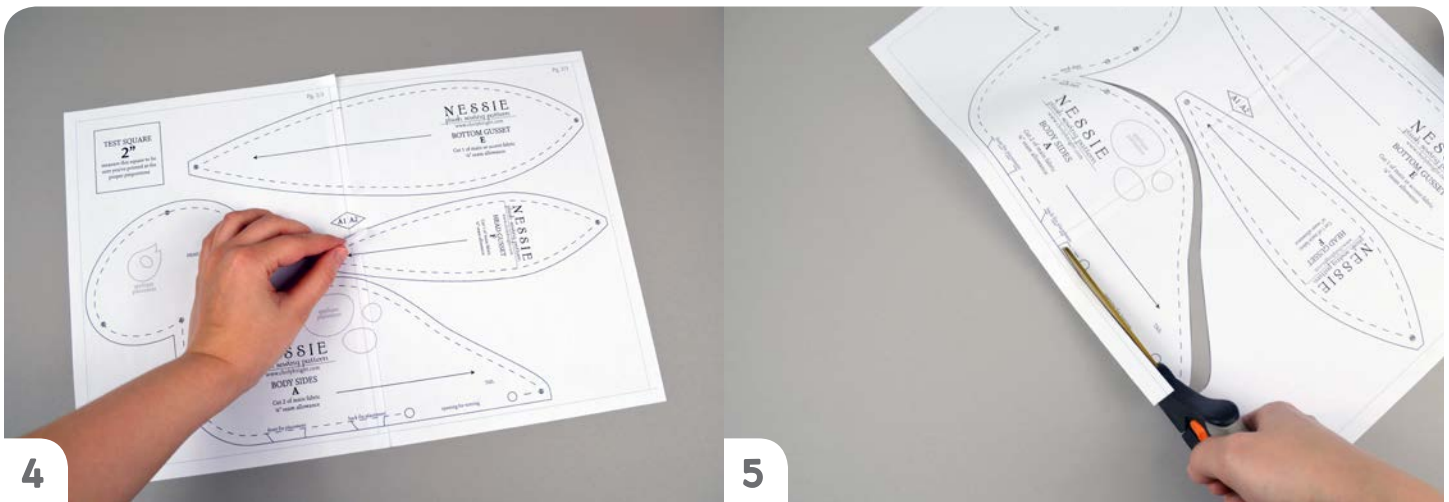
To print the pattern, set your computer to print **PAGES 18-22**. If you're unfamiliar with printing and assembling a .pdf pattern, read the steps below.



1 At the print dialog box, check the box that says print at "Actual Size" or 100%. Any other selection (such as "Fit to page") will distort the pattern so it's slightly larger or smaller and we don't want that.

2 Print the pages needed for the file. You might have one or more. Either way, be sure you have the full collection by noting the page numbers in the corner.

3 It's likely your printer will have a margin that ensures your image doesn't print to the very edge. Assembly will be easier if you trim off this blank margin edge. This will give you pages that overlap slightly during assembly. If you trim across the gray outline boxes, this will give you pages that don't overlap but rather butt against each other.



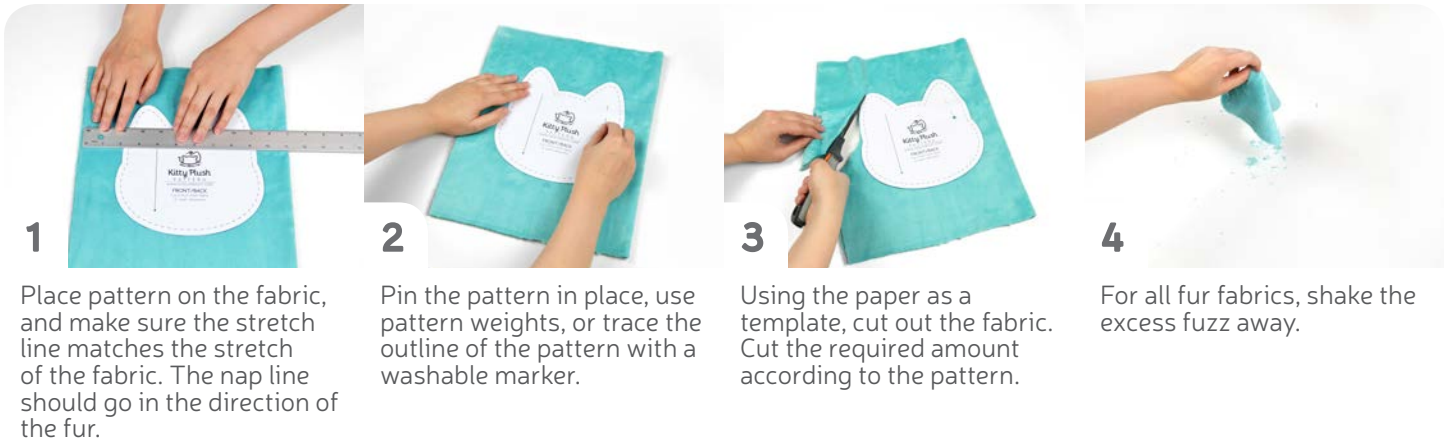
4 To line up the pattern pages, match up the corresponding diamond shapes. Each diamond will have a letter, so it's simply a matter of matching A1 to A2, B3 to B4 and so on. The faint gray lines indicate the border of every page, you should be able to line those up as well. When the diamond goes together, tape it in place. If you have many pages, it's easier to tape up the pages into rows first. Then tape the rows together into a full block.

5 You can trace the patterns onto a different paper, or you can also just cut them straight from the printer paper -- be sure that each piece is fully taped together along the joins so they don't fall apart when you cut them.

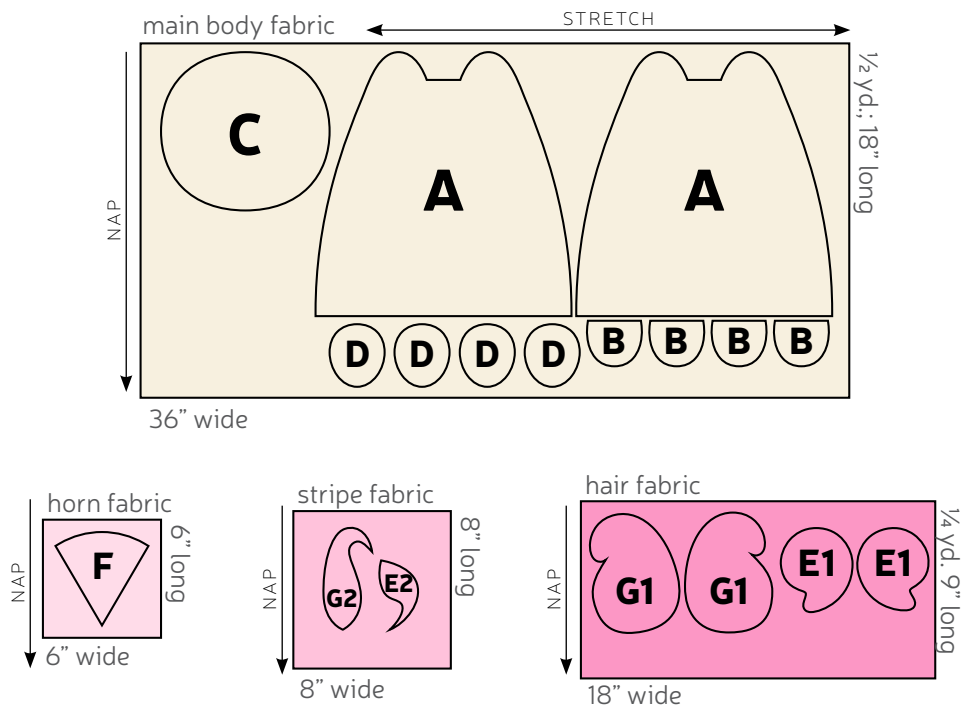
sew desu ne?

| WWW.CHOLYKNIGHT.COM |

cutting the fabric:



cutting layout:



BEFORE YOU BEGIN:

- Briefly read the project instructions so you know what to expect.
- If desired, mark the cut fabric pieces with the markings and symbols from the pattern. Or wait until the applicable step before transferring.
- Note that the seam allowance used is 1/4" throughout the project.

sew desu ne?

| WWW.CHOLYKNIGHT.COM |



1. PREPARE THE FACE APPLIQUE

- Take your fusible web and trace all your applique pieces onto the smooth (paper) side. You should have 2 eyes, 2 eye shines, and also a mouth, nose, and/or blush marks as you prefer.
- Fuse the bumpy (adhesive) side onto the wrong side of your applique fabric. The eyes/mouth go onto black, the eye shines on white, and the blush/nose on pink
- Cut out the eye pieces and arrange them on the Front/Back (A) piece of your main fabric. You can do this by setting your paper pattern on top of the fabric piece (right sides up), align the eye piece on top where the placement markings are, then carefully pull the paper pattern away while holding the applique piece in place.

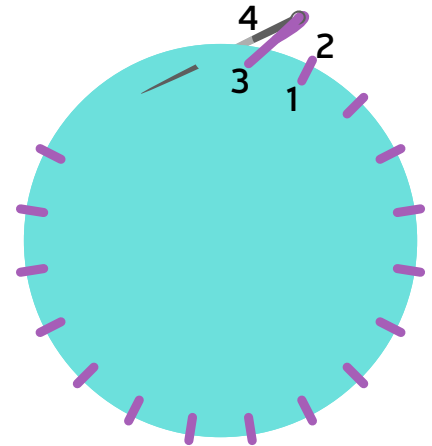
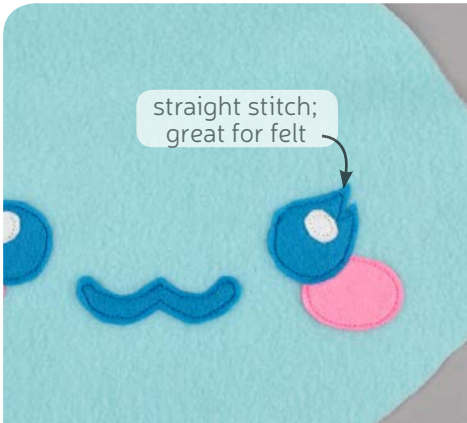


2. FUSE THE APPLIQUE

- Fuse the eye pieces in place with your iron (use a press cloth -- such as a scrap piece of cotton -- if you're using a polyester or fur fabric like minky).
- Next, move onto the smaller pieces, such as the eye shines, nose, or mouth. Fuse them much the same way as you did the eyes, using the paper pattern and photos as a guide.
- If you used heavy duty fusible web, you can keep the pieces fused without sewing, or you can sew them in place a number of ways. I've used a zigzag stitch here. This will now be your front piece, leaving the other blank side to be the back.
 - Refer to the next step for some other applique options.

sew desu ne?

| WWW.CHOLYKNIGHT.COM |

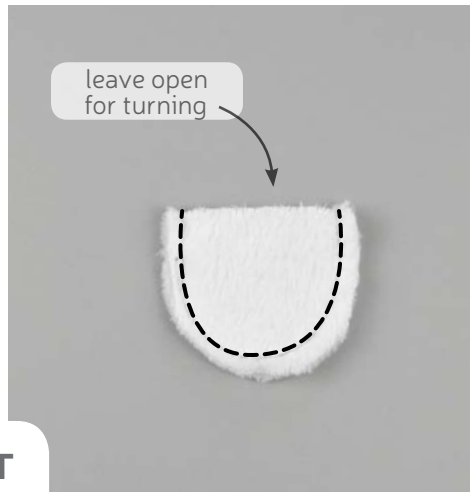


2a. OTHER APPLIQUE OPTIONS

Other good options for applique include a straight stitch, which involves sewing around the edge of the applique pieces with a straight stitch using matching thread -- about 1/8" in from the edge.

You can also applique by hand; I prefer a whipstitch. Thread a hand-sewing needle with some matching thread and knot it. Bring the thread up from the back of the project; about 1/8" in from the edge of the applique shape. Bring it down perpendicular from the curve, just outside of the applique shape. This completes one stitch.

For the next stitch, bring the needle back up about 1/8" away from the previous stitch and 1/8" in from the edge just as in the first stitch. Once again, bring it down just outside the applique shape. Continue this way until you've sewn around the shape.



3. SEW THE FRONT FEET

- Grab your Front Feet pieces (B). Take two of them and align them with right sides facing and raw edges matching up.
- Sew them together along the curved edge, leaving the straight edge free for turning right side out.
- Turn the foot right side out. Repeat with the remaining two Front Feet pieces so you have two complete feet total.

sew desu ne?

| WWW.CHOLYKNIGHT.COM |



4. STUFF THE FEET

- Take each front foot piece and stuff them semi-firmly with stuffing.
- To keep the stuffing from leaking out while you sew it to your cat, I like to baste it closed by sewing across the opening either by hand or quickly by machine. Hold the opening closed and pin it.
- Then stitch across the straight edge to secure all the stuffing inside. Repeat with the other foot so both front feet are complete.

basting:
A form of temporary sewing meant to hold pieces in place. A long stitch length is often used for this reason. The finished result is not meant to be seen and sometimes is even removed later (depending on your project).



5. BASTE THE FEET

- If you haven't already, locate the foot placement lines found on the Front/Back paper pattern. Transfer them over to the right side of your front piece. Align the stitched edge of the foot piece between these placement lines. Pin them in place.
- Stitch across the edge of the front piece to baste the feet in place.

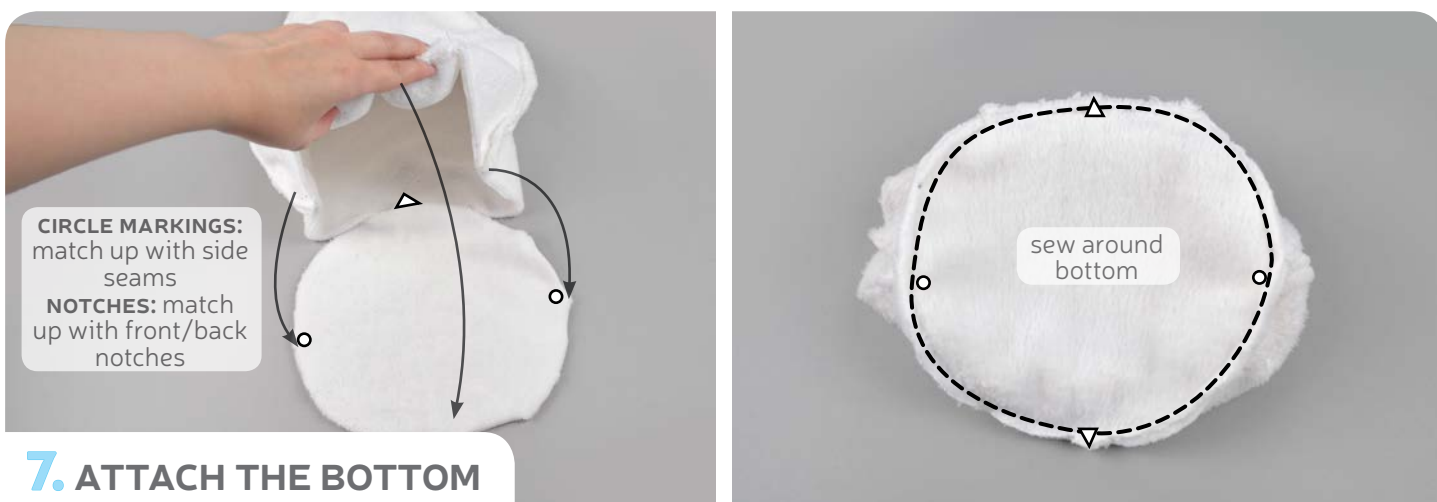
sew desu ne?

| WWW.CHOLYKNIGHT.COM |



6. SEW THE FRONT TO THE BACK

- Grab your blank back piece and layer it over the front piece with right sides facing and raw edges matching up.
- If you haven't already, locate the opening for turning markings on the front/back paper pattern. Transfer them over to the wrong side of the fabric. Sew around the long curved edge of the front/back pieces, being sure to leave both the opening for turning in the side, and the bottom straight edge open. Don't forget to pivot near the ears.
- Clip the seam allowance near the ear corners to increase the flexibility of the ears once they're turned.



7. ATTACH THE BOTTOM

- Grab your Bottom piece (C). If you haven't already, locate the placement markings on the Bottom paper pattern. The circle markings indicate the sides, while the notches indicate the front and the back. Line up the circle markings with the side seams of the Front/Back. Line up the notch markings with the notch markings found on the Front/Back. Pin the Bottom piece in place around the perimeter.
- Sew the Bottom to the Front/Back all the way around

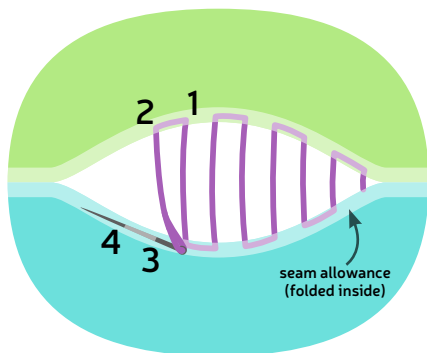
sew desu ne?

| WWW.CHOLYKNIGHT.COM |



8. STUFF AND SEW CLOSED

- Stuff the body semi-firmly with stuffing. Start by pushing toward the bottom until it looks full and round, then work your way up. Shove more stuffing into the ears, then finally fill in the center and face area.
- Once the plush is stuffed, make sure the seam allowances in the opening are tucked inside and prepare to ladder stitch it closed. Thread a hand-sewing needle and knot it at the end. Insert the needle from the inside of the opening and out of the plush near one edge of the opening. This will leave the knot inside the plush.
- Continue from here doing a ladder stitch. Take a 1/8" stitch into the fold of one side of the opening, then go across and take another. Keep going down the opening until you reach the end.
 - See the illustration below for more help.

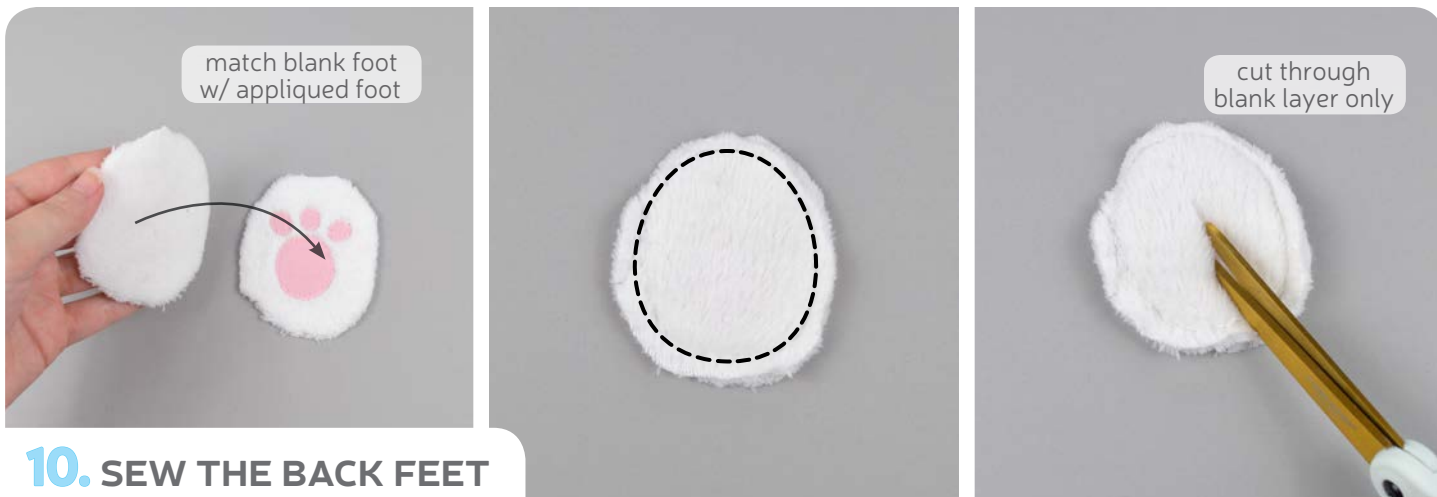


9. CLIP THE THREADS

- When you're finished, stitch a knot into the end of the seam. Then insert the needle near the finished knot and out of the plush about 1-2" away.
- Pull the thread through and hold it taut while snipping the thread. The excess thread should sink back inside the plush -- all hidden!

sew desu ne?

| WWW.CHOLYKNIGHT.COM |



10. SEW THE BACK FEET

- Grab your Back Feet pieces (D). Applique the paw pad shapes onto two of them following the same techniques shown in steps 1 & 2:
 - Trace two foot pads and six toe pads onto the paper side of your fusible web. Fuse the adhesive to your pink applique fabric. Cut out the appliques and fuse them to two Back Feet pieces. Leave as is or sew them in place as desired.
- Take one blank Back Foot and one applied one and align them with right sides facing.
- Sew around the perimeter of the foot.
- To turn the foot, cut a small 1" slit down the center of the foot. Repeat with the remaining two foot pieces for two completed feet total.

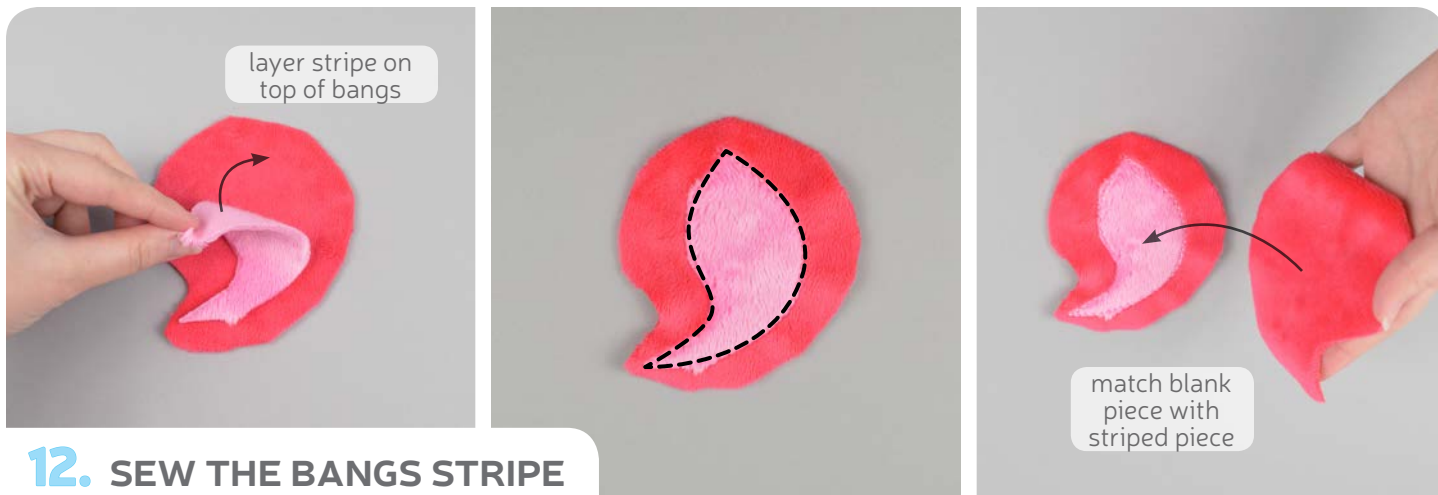


11. ATTACH THE BACK FEET

- Turn the feet right side out.
- Place the pair of feet on the bottom of the plush with the appliqued side facing out. The paper pattern has placement guides, but they're basically centered near the back of the bottom nestled right against each other. Be sure that the toes are pointing toward the front of the plush. Pin them in place by sticking pins through the feet down into the plush.
- Sew the feet in place by using a ladder stitch around the perimeter of each foot.

sew desu ne?

| WWW.CHOLYKNIGHT.COM |



12. SEW THE BANGS STRIPE

- Grab your Bangs pieces (E1 & E2). Take one of the bangs and your stripe piece. Align the stripe on top of the bangs so it's centered. Refer to the placement lines found on the paper pattern for help. Pin the stripe in place, or use a bit of glue stick for a stronger hold.
- Stitch the stripe in place around the perimeter using either a zigzag stitch or a straight stitch as you prefer.
- Take the striped piece and the remaining blank piece and align them together with right sides facing and raw edges matching up.

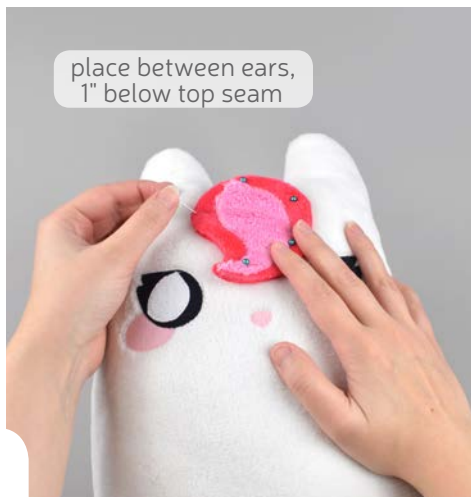


13. SEW THE BANGS

- Sew around the perimeter of the bangs.
- Trim the excess seam allowance found near the tip of the bangs to reduce bulk.
- To turn the bangs, cut a small slit in the middle of the bangs through the blank piece only. Don't cut the side with the stripe.

sew desu ne?

| WWW.CHOLYKNIGHT.COM |



14. ATTACH THE BANGS

- Turn the bangs right side out and define the point with a chopstick or similar turning tool.
- Place the bangs on the front of the cat about 1" beneath the top seam so the tip is pointing downward. The paper pattern also has guidelines for extra help. Hold it in place by putting pins down through the bangs into the body of the plush.
- Stitch around the round part of the bangs with a ladder stitch to hold it in place, similar to how you did back in step 8. I like to let the curled tip of the bangs be free for a more 3D look.



15. SEW THE HORN

- Grab your Horn piece (F). If you haven't already, locate the spiral stitching lines found on the paper pattern. Transfer them over to the right side of the fabric. I find it's easier to do this by trimming the pattern along the stitching lines and tracing the paper edge.
- Fold the horn in half lengthwise to make it into a skinner triangle. Bring right sides together and align the diagonal edges.
- Sew the horn along this edge, leaving the bottom curved edge free for turning later.

sew desu ne?

| WWW.CHOLYKNIGHT.COM |



16. TURN & STUFF THE HORN

- Trim the excess seam allowance near the tip of the horn to reduce bulk.
- Turn the horn right side out and define the point with a chopstick or similar turning tool.
- Stuff the horn lightly with stuffing. Be sure to put small bits in the tip to start, then work your way up.



17. CINCH THE HORN CLOSED

- Thread a hand-sewing needle and knot the end. Run a gathering stitch around the opening of the horn.
- Pull at the thread to cinch the horn closed. Tuck in the fabric edges so nothing is poking out.
- Next, sew a gathering stitch along the stitch lines you traced earlier. Start from the bottom working around the horn. Try to make the stitches slightly shorter and more even for the best look. Pull at the thread lightly to form the horn spiral.
 - *Finish the horn in the next step.*

gathering:

The process of shortening the length of a piece of fabric by sewing long stitches through it. When the thread is pulled, it forms small folds that ruffle the fabric.

gathering stitch:

A long version of the running stitch, which is a stitch done by weaving the needle in and out of a length of fabric going along a line. The long stitches (about ¼"-½" long) gather the fabric when pulled later.

sew desu ne?

| WWW.CHOLYKNIGHT.COM |



18. ATTACH THE HORN

- Keep working in a spiral making gathering stitches all the way to the top of the horn. Pull at the thread lightly to form the spirals and stitch a knot in the top of the horn while the thread is lightly cinched. Clip the thread the same when you finish a ladder stitch; bring the needle out about 1" away and pull while clipping.
- Place the cinched bottom of the horn in the middle of the bangs, ideally with the horn seam pointing up. Pin the horn in place by sticking pins down into the base of the horn into the plush body.
- Stitch around the base of the horn with a ladder stitch similar to how you did back in step 11.



19. SEW THE TAIL STRIPE

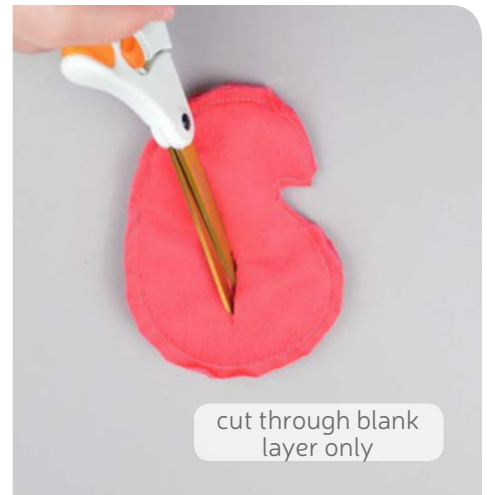
- Grab your Tail pieces (G1 & G2). Take one of the tails and your stripe piece. Align the stripe on top of the tail so it's centered. Refer to the placement lines found on the paper pattern for help. Pin the stripe in place, or use a bit of glue stick for a stronger hold.
- Stitch the stripe in place around the perimeter using either a zigzag stitch or a straight stitch as you prefer.
- Take the striped piece and the remaining blank piece and align them together with right sides facing and raw edges matching up.

sew desu ne?

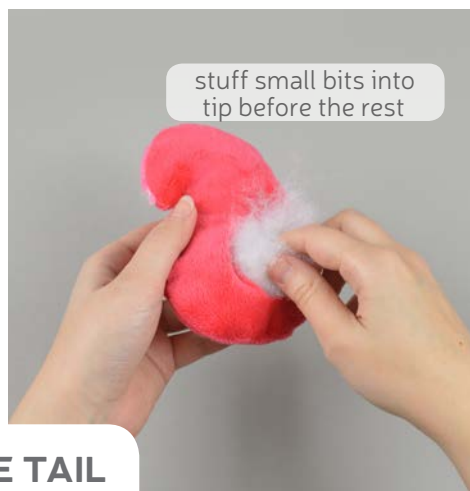
| WWW.CHOLYKNIGHT.COM |



20. SEW THE TAIL



- Sew around the perimeter of the tail.
- Trim the excess seam allowance found near the tip of the tail to reduce bulk and increase flexibility when turned.
- To turn the tail, cut a small slit in the base of the tail through the blank piece only. Don't cut the side with the stripe.



21. STUFF & CLOSE THE TAIL

- Turn the tail right side out. Poke out the top with a chopstick or similar turning tool.
- Stuff the tail lightly with stuffing. Be sure to get small bits in the tip before filling the larger areas.
- Close up the opening with a simple whip stitch; nothing too fancy since the stitching won't be seen.

whip stitch:

A kind of overhand stitch where the needle is brought from the back of the project to the front. The thread wraps around the fabric edge and the process is repeated for each stitch.

sew desu ne?

| WWW.CHOLYKNIGHT.COM |



22. ATTACH THE TAIL

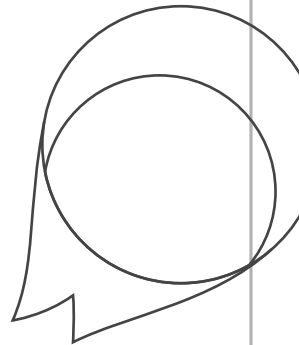
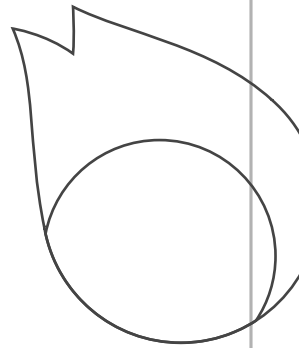
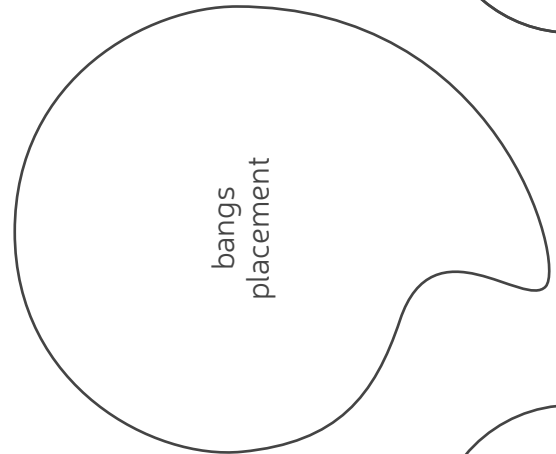
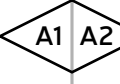
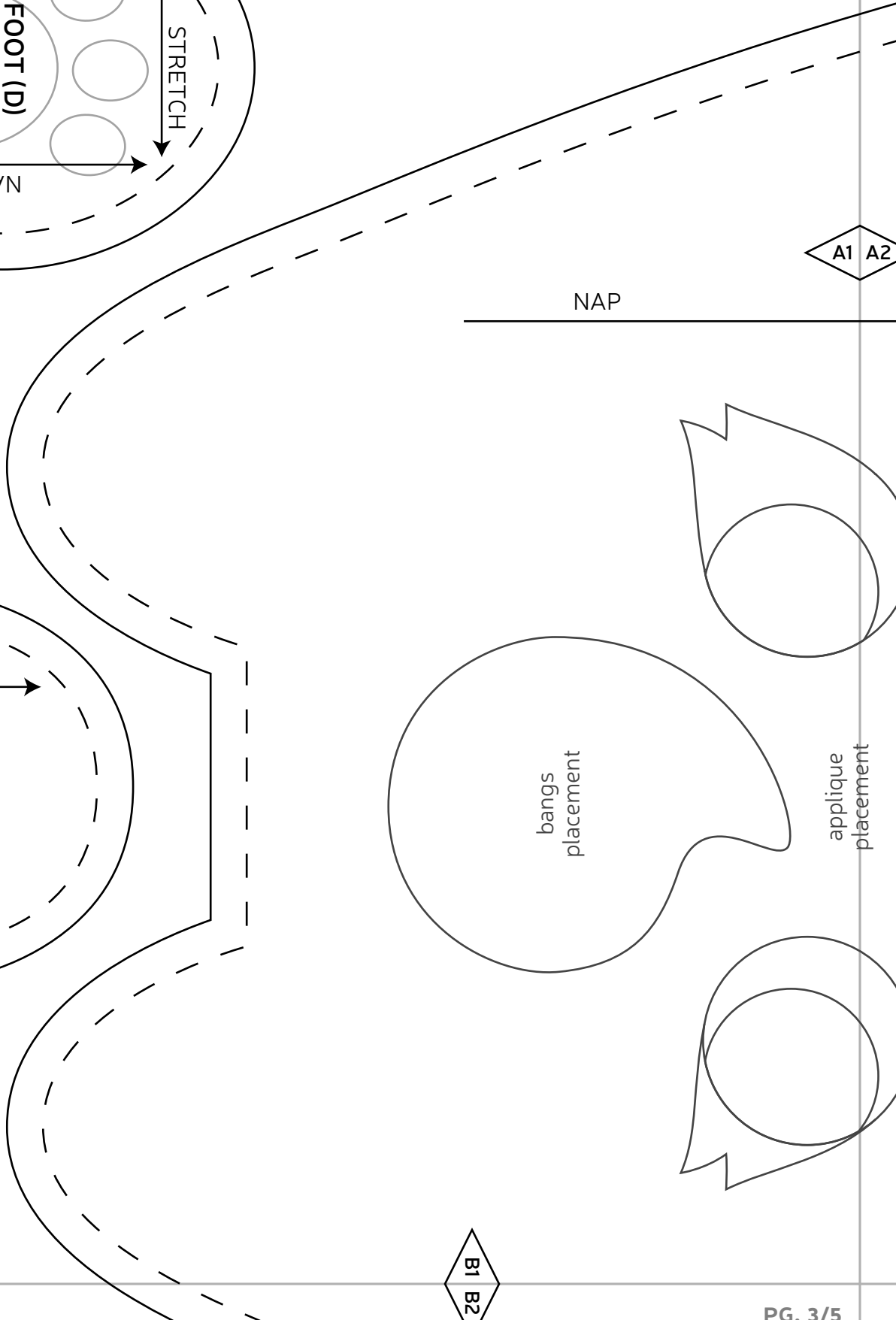
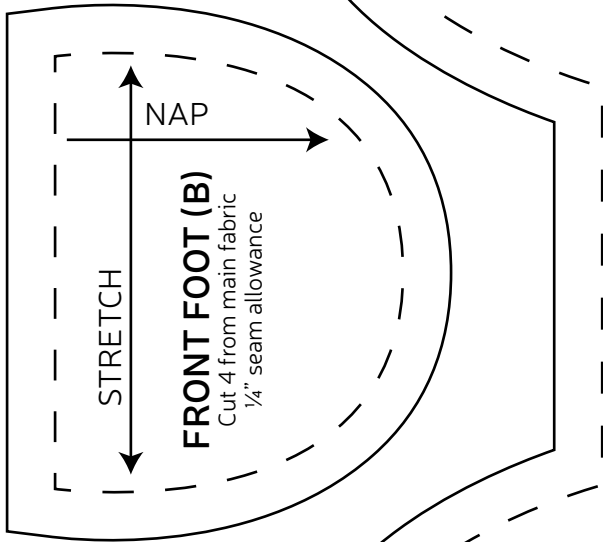
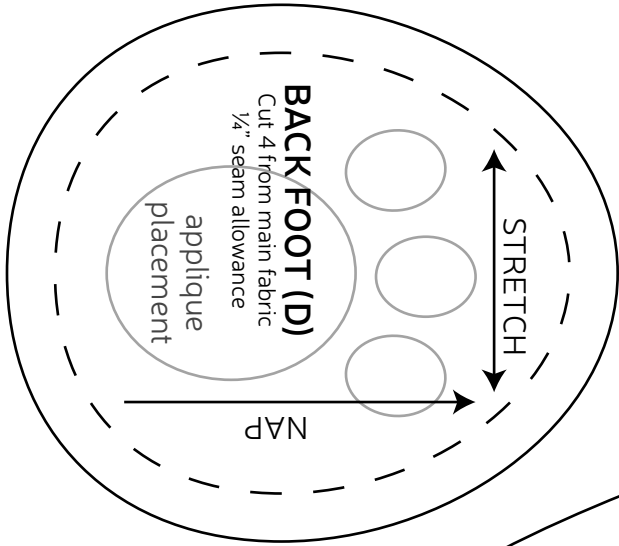
- Place the tail so the whip stitched side is facing the back of the body. It should be centered near the bottom with the curly tip pointing up. The paper pattern also has a guideline for extra help. Pin the tail in place by sticking pins down through the tail and right into the body.
- Sew around the base of the tail with a ladder stitch similar to the bangs. Sew around the rounded part first. Stop when you get to the curly tip area.
- Flip the curly tip part of the tail down and sew across. This leaves the tip free for more of a 3D look.



congrats!
this completes
your plush! Now
give it a big hug!

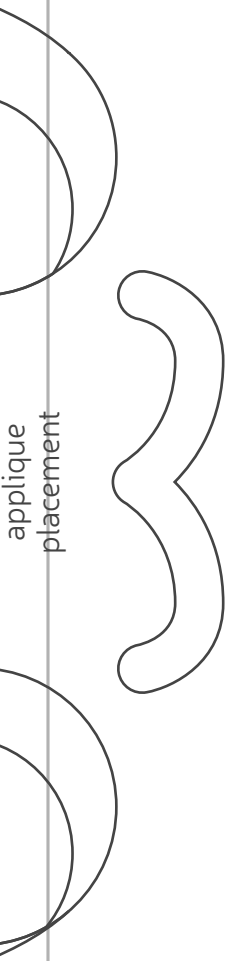
sew desu ne?

| WWW.CHOLYKNIGHT.COM |



A1 A2

applique
placement



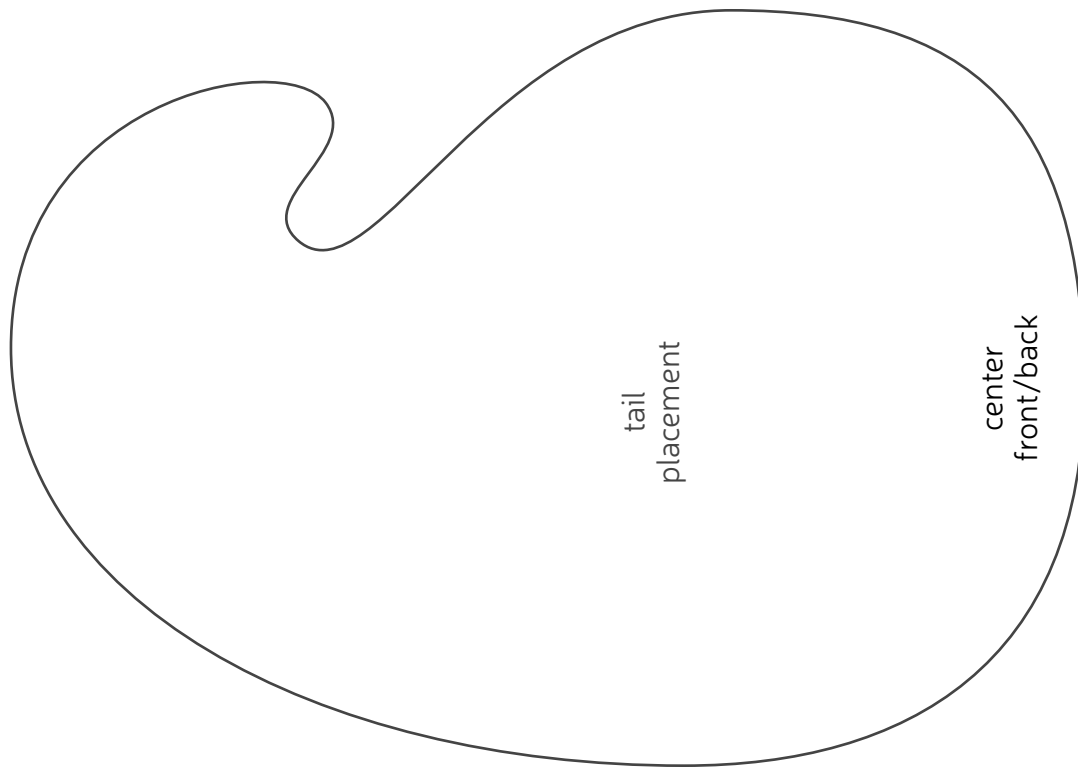
STRETCH



Unicom Kitty Pillow Plush

P A T T E R N
WWW.CHOLYKNIGHT.COM

FRONT/BACK (A)
Cut 2 from main fabric
1/4" seam allowance

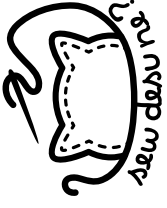
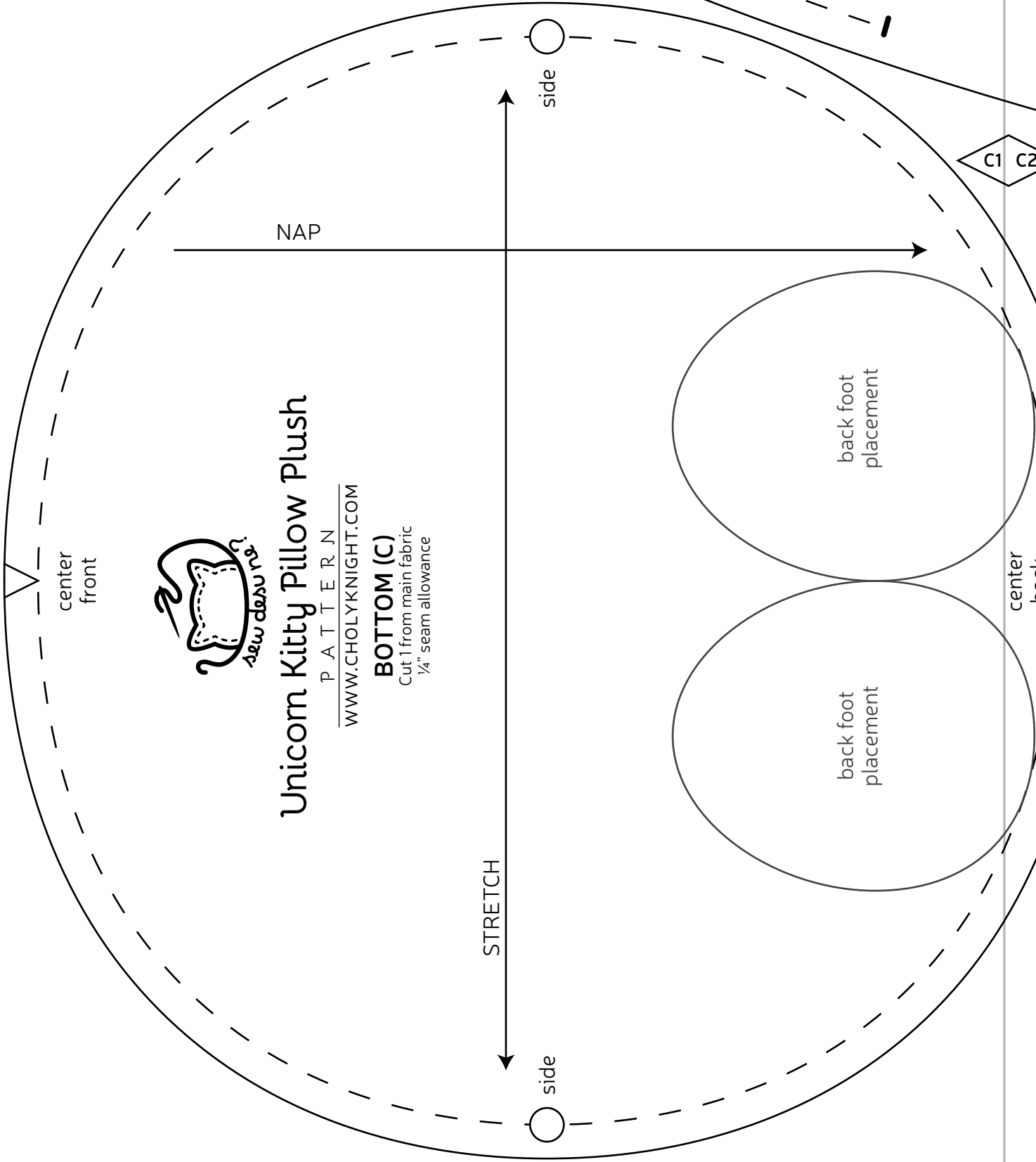


front foot placement

B3 B4

B1 B2

C1 C2



Unicorn Kitty Pillow Plush

P A T T E R N
WWW.CHOLYKNIGHT.COM

BOTTOM (C)
 Cut 1 from main fabric
 1/4" seam allowance

center front

side

NAP

STRETCH

side

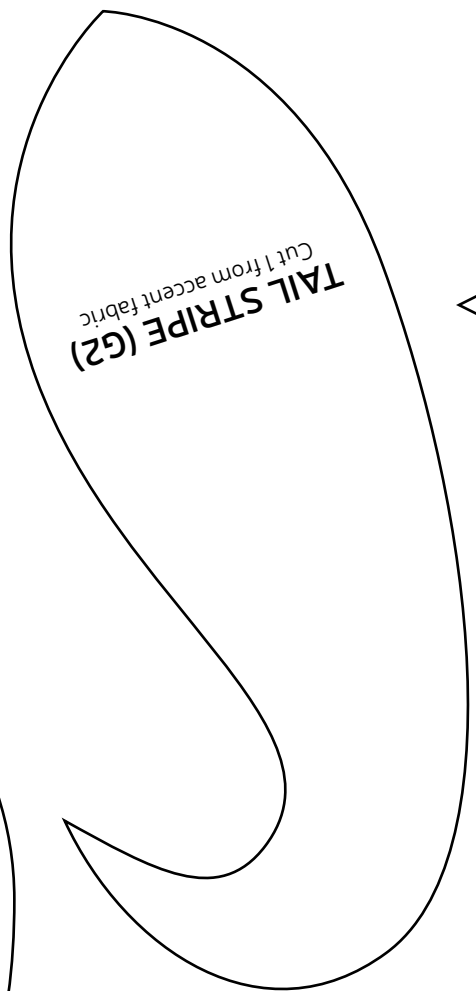
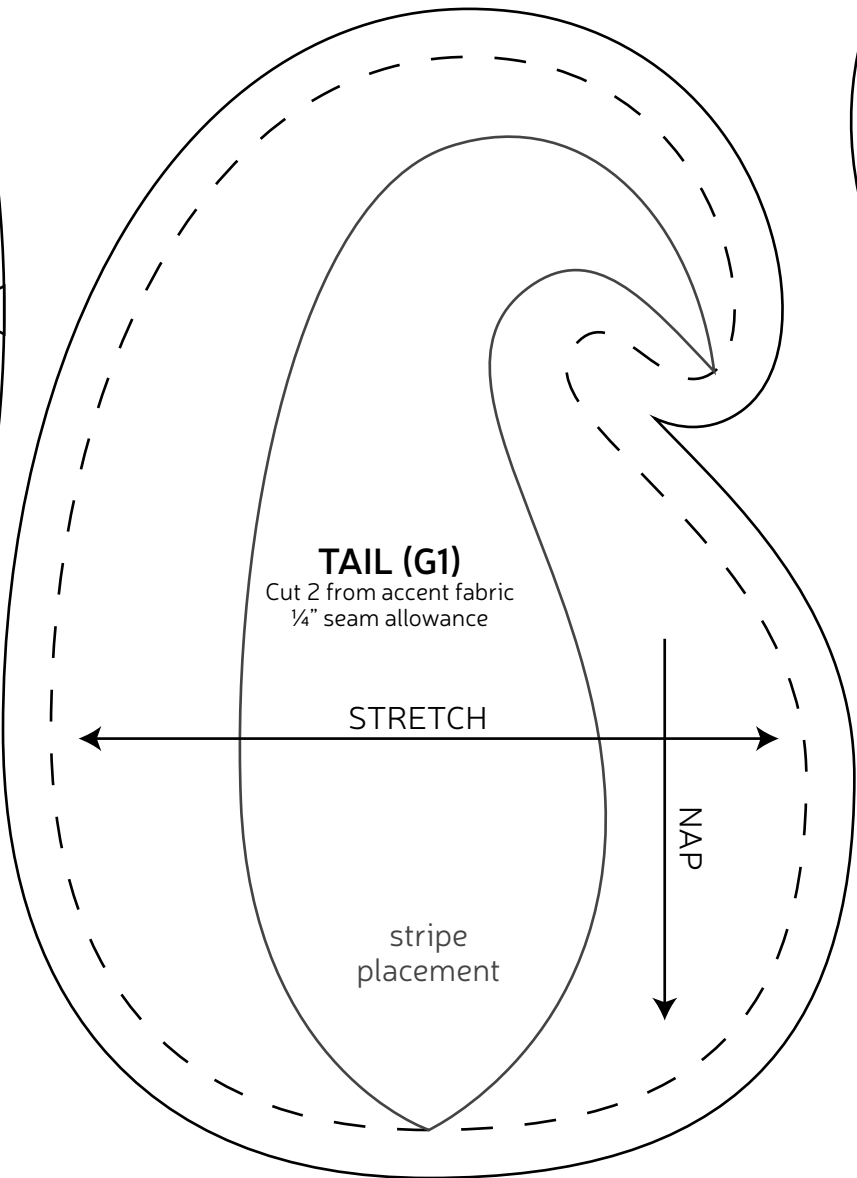
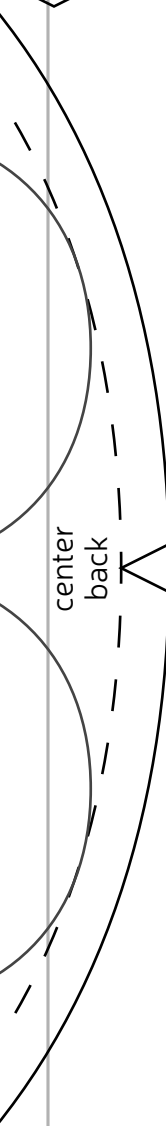
back foot placement

back foot placement

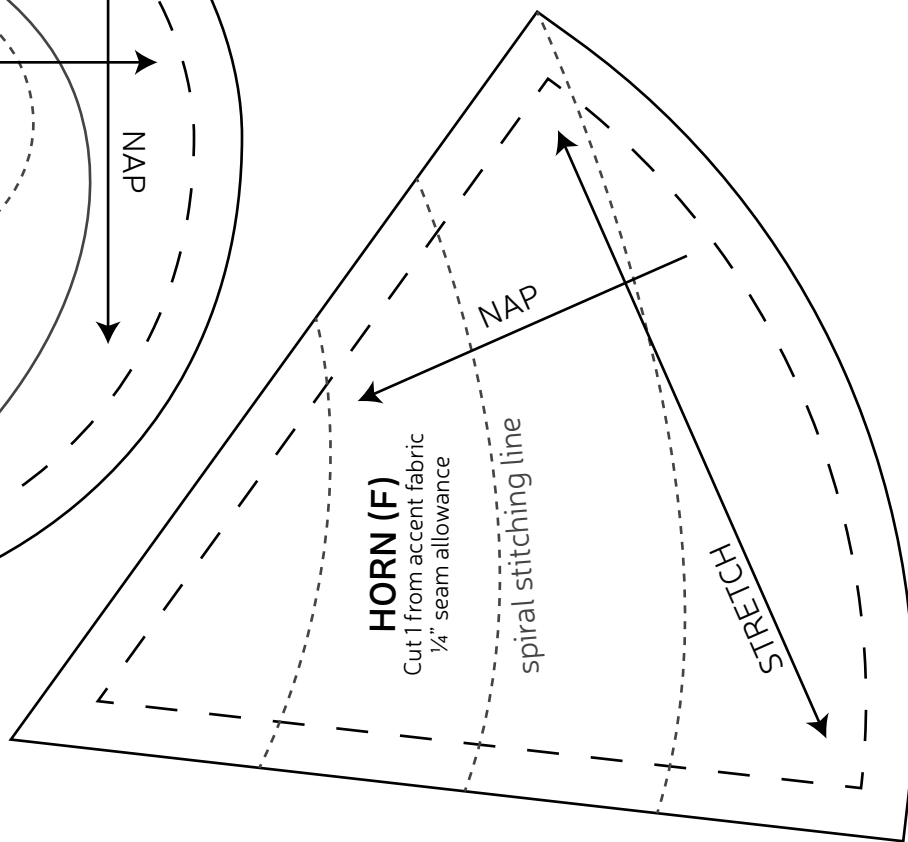
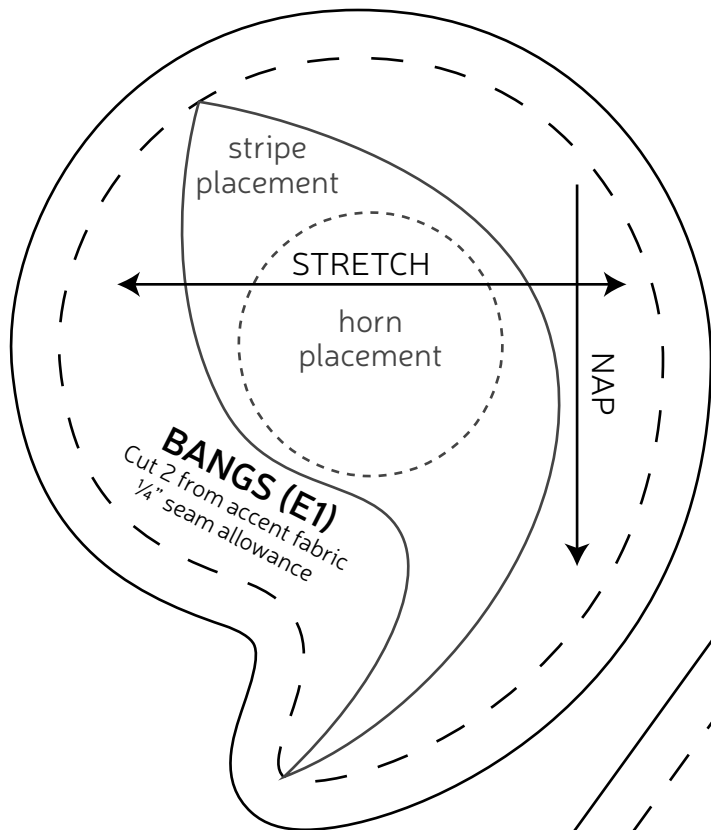
center back

opening for turning

C1 C2



C3 C4



C3 C4

