

WINTER PLUSH CHARMS



A FREE SEWING PATTERN BY



WINTER PLUSH CHARMS

This super simple round charm is perfect for beginners and makes a great keychain. But in keeping with the season, why not make it an adorable ornament? There are loads of options to choose, from an arctic fox, polar bear, arctic hare, or cute white cat.

DIFFICULTY:



The ears on the arctic hare might bump this up to a 2/10, but if you stick with the easy tips this pattern would be okay for someone who hasn't sewn before.

MAKES:

One plush: 3" wide, 4" tall, and 2½" long (not including ears and tail)

SKILLS USED:

- Fusible web applique
- Basting
- Darts
- Sewing small pieces
- Gathering stitch, gathering
- Ladder stitch
- Sewing curves



sew desu ne?

| WWW.CHOLYKNIGHT.COM |

materials & tools:

- ¼ yd. of fabric for main body
- 2½" piece of ribbon for hanging
- 15" x 1" piece of fleece for scarf
- **FOR FOX OR RABBIT:** 6" x 6" piece of accent fabric for ears/ear tips/tail
- 2" x 2" piece of applique fabric (felt, cotton, etc.) for eyes
- 2" x 2" piece of pink applique fabric for optional blush marks and/or nose
- 3" x 3" piece of light or heavy duty fusible web
- sewing thread to match main fabric and applique fabrics
- poly-fil stuffing
- basic sewing tools (sewing machine, scissors, iron, needles, pins, fabric marker, seam ripper)
- white fabric paint and paint brush



SUGGESTED FABRICS:

Plush, stretchy fabrics such as fleece or minky are suggested. The variations of fleece and minky mentioned to the left would work well, but really any plushy fabric with a bit of stretch on the cross-wise grain would be well-suited.

Stretch fabrics like **FLEECE** or **MINKY** will create a more squat, round shape when stuffed.

Non-stretchy fabrics, like **FELT** or **COTTON**, won't stretch when stuffed so the resulting plush will look elongated as shown.

MINKY

VS.

FELT

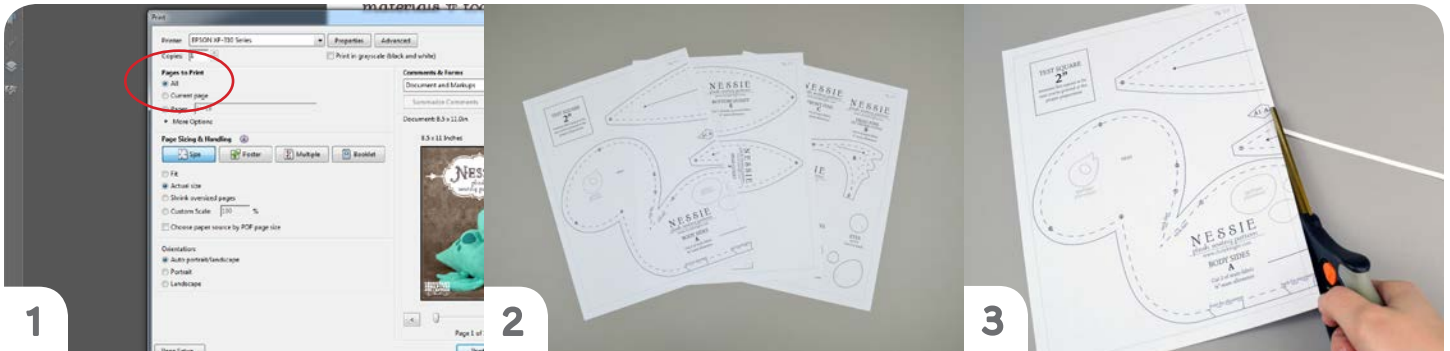


sew desu ne?

| WWW.CHOLYKNIGHT.COM |

printing the pattern:

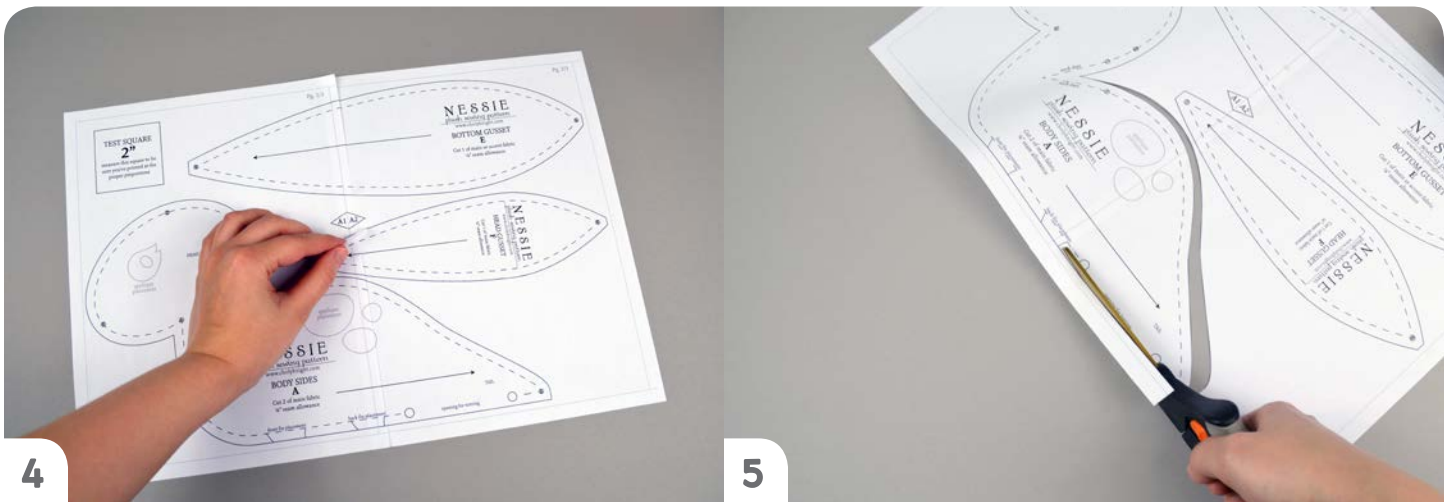
To print the pattern, set your computer to print **PAGE 15-16**. If you're unfamiliar with printing and assembling a .pdf pattern, read the steps below.



1 At the print dialog box, check the box that says print at "Actual Size" or 100%. Any other selection (such as "Fit to page") will distort the pattern so it's slightly larger or smaller and we don't want that.

2 Print the pages needed for the file. You might have one or more. Either way, be sure you have the full collection by noting the page numbers in the corner.

3 It's likely your printer will have a margin that ensures your image doesn't print to the very edge. Assembly will be easier if you trim off this blank margin edge. This will give you pages that overlap slightly during assembly. If you trim across the gray outline boxes, this will give you pages that don't overlap but rather butt against each other.



4 To line up the pattern pages, match up the corresponding diamond shapes. Each diamond will have a letter, so it's simply a matter of matching A1 to A2, B3 to B4 and so on. The faint gray lines indicate the border of every page, you should be able to line those up as well. When the diamond goes together, tape it in place. If you have many pages, it's easier to tape up the pages into rows first. Then tape the rows together into a full block.

5 You can trace the patterns onto a different paper, or you can also just cut them straight from the printer paper -- be sure that each piece is fully taped together along the joins so they don't fall apart when you cut them.

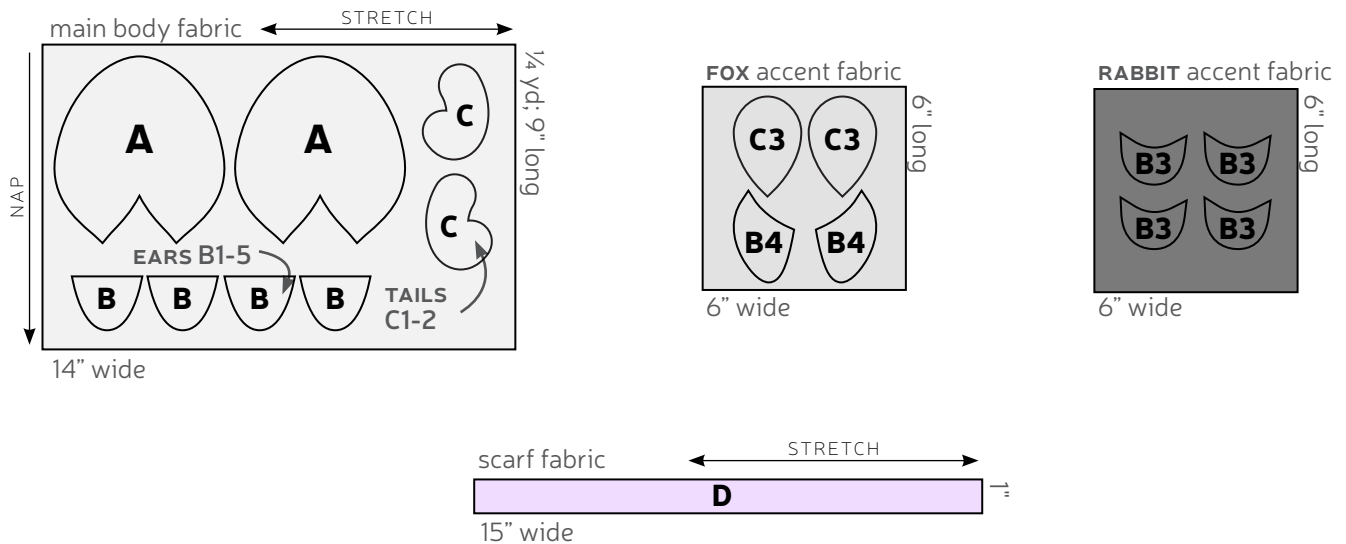
sew desu ne?

| WWW.CHOLYKNIGHT.COM |

cutting the fabric:

- Place pattern on the fabric, and make sure the stretch line matches the stretch of the fabric. The nap line should go in the direction of the fur.
- Pin the pattern in place, use pattern weights, or trace the outline of the pattern with a washable marker.
- Using the paper as a template, cut out the fabric. Cut the required amount according to the pattern.
- For all fur fabrics, shake the excess fuzz away.

cutting layout:



BEFORE YOU BEGIN:

- Briefly read the project instructions so you know what to expect.
- If desired, mark the cut fabric pieces with the markings and symbols from the pattern. Or wait until the applicable step before transferring.
- Note that the seam allowance used is 1/4" throughout the project.

sew desu ne?

| WWW.CHOLYKNIGHT.COM |



1. PREPARE THE FACE APPLIQUE

- Take your fusible web and trace all your desired applique pieces onto the smooth (paper) side. You should have at least two eyes. But you can also add a nose or mouth as well.
- Fuse the bumpy (adhesive) side onto the wrong side of your applique fabric. The eyes go onto accent fabric, the blush marks on pink, and the pupils on black. The nose can go on pink or black as you prefer.
- Cut out the eye pieces and arrange them on the **BODY** (A) piece. Set your paper pattern on top of the fabric piece (right sides up), align the eye piece on top where the placement markings are, then carefully pull the paper pattern away while holding the applique piece in place.



EASY OPTION:

You can also glue the felt face pieces in place with some fabric glue.



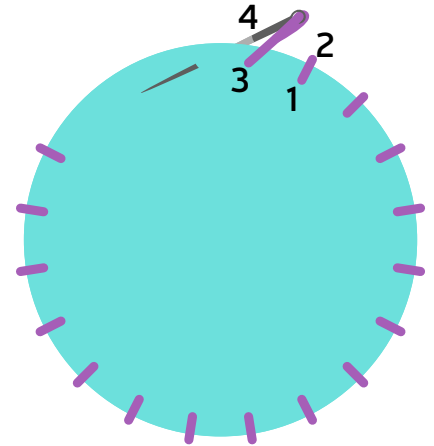
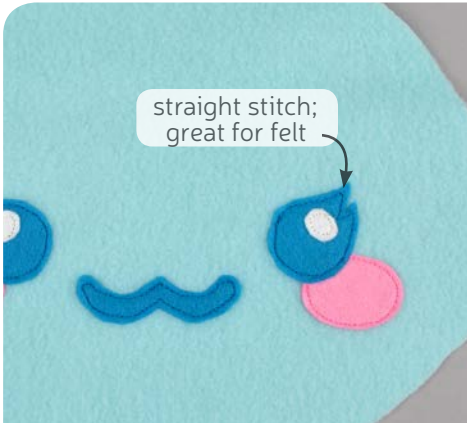
2. SEW THE APPLIQUE

- Fuse the pieces in place with your iron (use a press cloth -- such as a scrap piece of cotton -- if you're using a polyester or fur fabric like minky).
- If you used heavy duty fusible web, you can keep the pieces fused without sewing, or you can sew them in place a number of ways. I've used a zigzag stitch here.

→ Refer to the next step for some other applique options.

sew desu ne?

| WWW.CHOLYKNIGHT.COM |

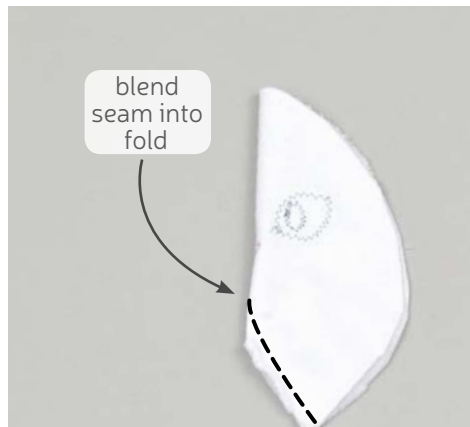


2a. OTHER APPLIQUE OPTIONS

Other good options for applique include a straight stitch, which involves sewing around the edge of the applique pieces with a straight stitch using matching thread -- about 1/8" in from the edge.

You can also applique by hand; I prefer a whipstitch. Thread a hand-sewing needle with some matching thread and knot it. Bring the thread up from the back of the project; about 1/8" in from the edge of the applique shape. Bring it down perpendicular from the curve, just outside of the applique shape. This completes one stitch.

For the next stitch, bring the needle back up about 1/8" away from the previous stitch and 1/8" in from the edge just as in the first stitch. Once again, bring it down just outside the applique shape. Continue this way until you've sewn around the shape.



3. SEW THE FRONT TO THE BACK

- Locate the open wedge found at the bottom of the **BODY** piece -- this is a dart. To sew it, start by folding the body in half along the point of the dart and match up the slanted lines that make the wedge shape.
- Sew the dart by starting at the opening and moving down to the point. When sewing the point, try to blend the seam in with the fold so it makes a smooth transition and a rounder finished plush.
- Repeat with the other body piece for two darts total.

darts:

A wedge-shaped gap found in a pattern. When sewn in fabric, it creates a tuck in the fabric and develops a 3D shape. The diagonal sides of the wedge are the **LEGS**; these are matched up and sewn to the **POINT** of the dart.

sew desu ne?

| WWW.CHOLYKNIGHT.COM |



4. BASTE THE RIBBON

- Take your ribbon piece and fold it in half (wrong sides together). Take the short ends and align it against the center top edge of the front **BODY** piece. There's a notch on the paper pattern if you transferred it over.
- Baste the ends of the ribbon to the body within the seam allowance to hold it in place.

basting:

A form of temporary sewing meant to hold pieces in place. A long stitch length is often used for this reason. The finished result is not meant to be seen and sometimes is even removed later (depending on your project).



5. FOR RABBIT: SEW THE EAR TIPS

- Grab your **RABBIT EAR** and **EAR TIP** pieces (B2-3). The inner curve of the ear tip is meant to attach to the outer curve of the ear base. Stretch the ear tip to fit around the ear base.
- Sew the tip to the base along this curved edge.
- When complete, flatten out the ear to show the full ear. Repeat with the remaining ear base and ear tip pieces for four complete ears total.

sew desu ne?

| WWW.CHOLYKNIGHT.COM |

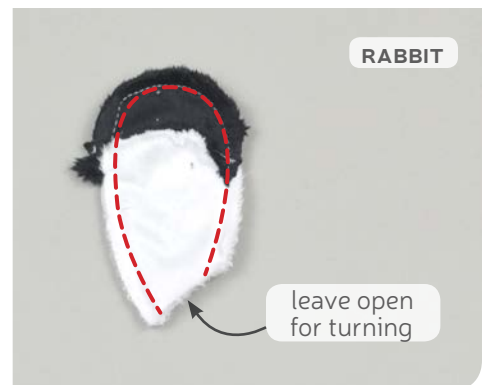
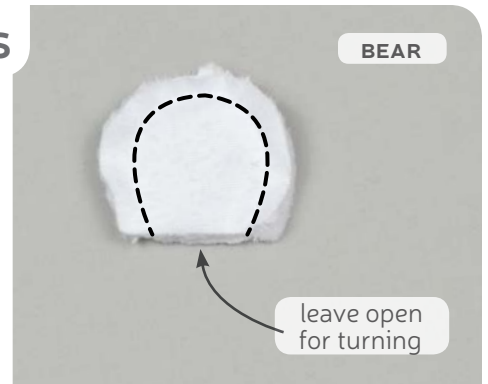
- Grab all of your **EAR** pieces (B1-5). Take two of them and align them with right sides facing and raw edges matching up.
- **FOR FOX:** use one accent color ear with one main body color ear when matching up.

6. ALIGN THE EAR PIECES



- Though each ear is shaped differently, sewing them is basically the same. Sew them along the curved edge and leave the short straight edge free for turning right side out.
- Repeat with the remaining two ear pieces for two complete ears total.

7. SEW THE EAR PIECES



sew desu ne?

| WWW.CHOLYKNIGHT.COM |

- Turn your ears right side out through the opening. You should have two complete ears total.
- For **FOX/RABBIT**: the two ears should mirror each other as shown.

8. TURN THE EAR PIECES



- If you haven't already, locate the **ear placement line** located on the paper pattern for the **BODY (A)**. Transfer it over to the right side of the fabric.
- Align the open end of the ear along these placement lines.
- **FOR FOX:** be sure that the inner ear is facing the front.
- **FOR FOX/RABBIT:** the opening of the ear is slanted. Align it so the ear points inward when against the front. If done wrong, the ear will be facing downward.

9. ALIGN THE EAR PIECES



sew desu ne?

| WWW.CHOLYKNIGHT.COM |



10. SEW THE FRONT TO THE BACK

- Baste the ears to the **BODY FRONT** within the seam allowance to hold them in place.
- Take the **BODY BACK** piece from before and align it over the body front with right sides facing and raw edges matching up.
- If you haven't already, locate the opening for turning markings on the paper pattern for the body. Transfer them over to the wrong side of the fabric. Sew around the perimeter of the body, leaving the opening that you just marked.



11. TURN AND STUFF THE BODY

- Turn the body right side out through the opening.
- Stuff the body fully with stuffing so it takes a nice round shape.
- Once the plush is stuffed, make sure the seam allowances in the opening are tucked inside and prepare to ladder stitch it closed. Thread a hand-sewing needle and knot it at the end. Insert the needle from the inside of the opening and out of the plush near one edge of the opening. This will leave the knot inside the plush.

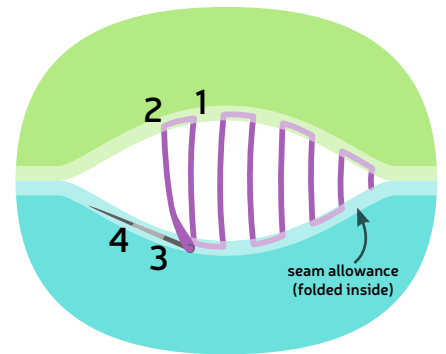
sew desu ne?

| WWW.CHOLYKNIGHT.COM |



12. CLOSE UP THE PLUSH

- Take a 1/8" stitch into the fold of one side of the opening, then go across and take another. Keep going down the opening until you reach the end.
- When you're finished, stitch a knot into the end of the seam. Then insert the needle near the finished knot and out of the plush about 1-2" away.
- Pull the thread through and hold it taut while snipping the thread. The excess thread should sink back inside the plush -- all hidden!



13. TIE ON THE SCARF

- Take your **SCARF** piece (D) and make 1" long cuts that are 1/4" apart into each end of the scarf for fringe.
- Tie the scarf around your plush, just below the face. Keep the knot off to the side for a cute look.

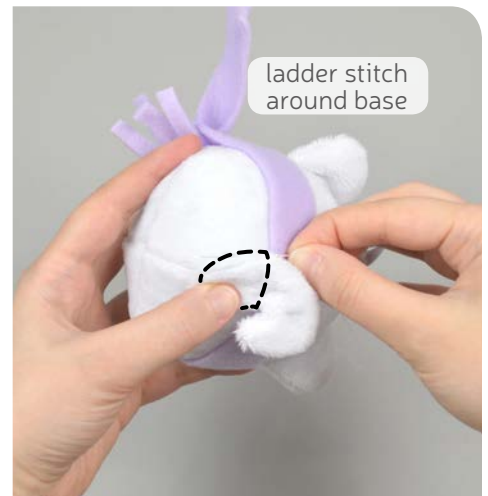
sew desu ne?

| WWW.CHOLYKNIGHT.COM |



14. FOR CAT OR FOX: SEW THE TAIL PIECES

- Grab your **CAT** or **FOX TAIL** pieces (C1 or C3). Align them together with right sides facing and raw edges matching up.
- Sew around the perimeter of the shape. Trim the excess seam allowance around the curves and sharp corners.
- To turn the tail, cut a small 1" slit near the bottom center of the tail, through one layer of fabric only.



15. FOR CAT OR FOX: ATTACH THE TAIL

- Turn the **TAIL** right side out through the opening. Stuff lightly if desired.
- Place the tail on the back of the plush so the base is below the scarf.
- Use a ladder stitch to sew the tail to the back of the plush just around the base. Keep the tip of the tail free for a more 3D look.

sew desu ne?

| WWW.CHOLYKNIGHT.COM |



16. FOR RABBIT OR BEAR: SEW THE TAIL PIECES

- Grab your **RABBIT/BEAR TAIL** piece (C2). Thread a hand sewing needle with matching thread and knot the end. Sew a gathering stitch around the perimeter of the tail.
- Pull at the threads a little bit to gather up the circle so it makes a cup-like shape. While it's like this, stuff it lightly with stuffing.
- Cinch up the thread the rest of the way to close up the circle into a sphere. Stitch a few knots through the middle to hold the tail closed. If you have a lot of thread leftover, consider leaving it on to attach the tail to the back next.

gathering:

The process of shortening the length of a piece of fabric by sewing long stitches through it. When the thread is pulled, it forms small folds that ruffle the fabric.

gathering stitch:

A long version of the running stitch, which is a stitch done by weaving the needle in and out of a length of fabric going along a line. The long stitches (about $\frac{1}{4}$ "- $\frac{1}{2}$ " long) gather the fabric when pulled later.



17. FOR RABBIT OR BEAR: ATTACH THE TAIL

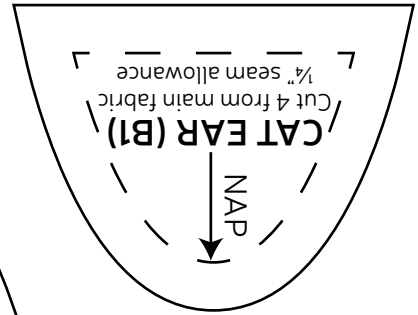
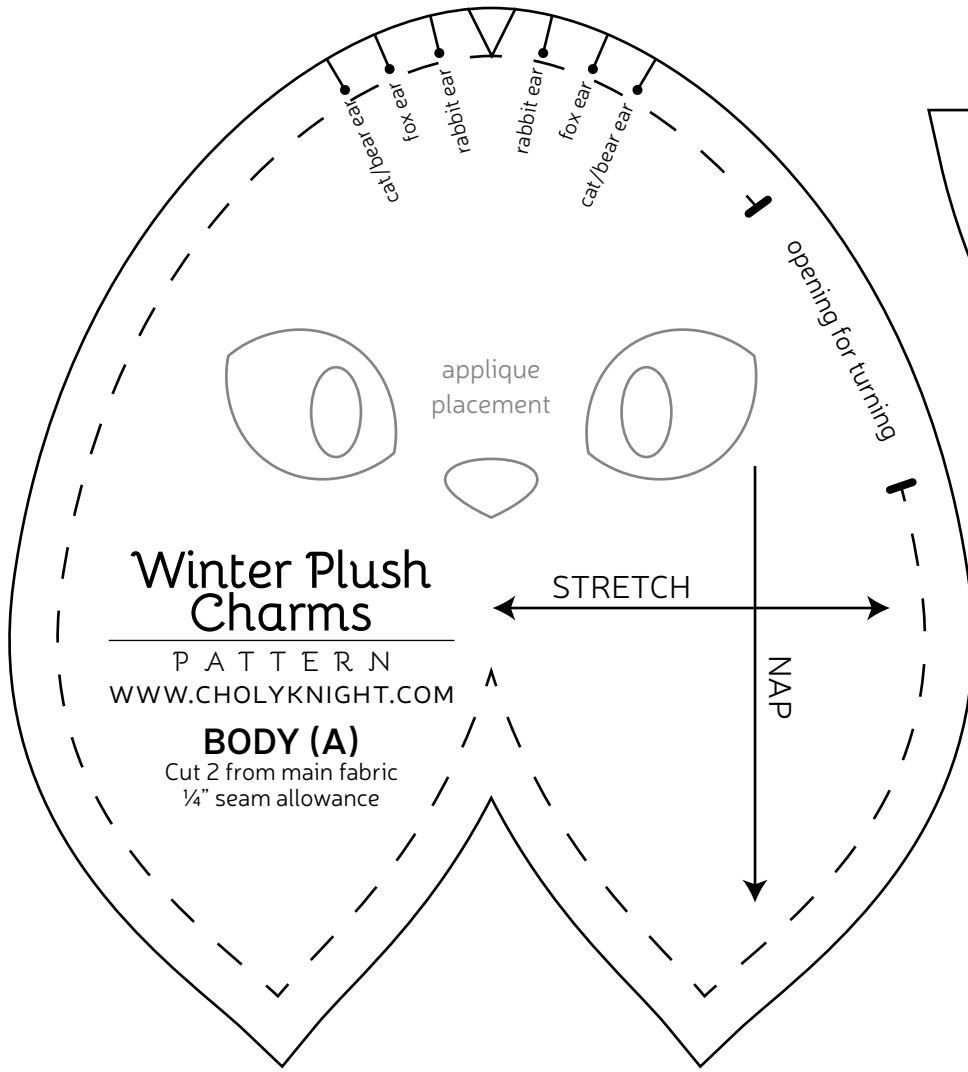
- Place the **TAIL** on the back of the plush, centered along the bottom beneath the scarf. Make sure the opening is facing the back (so it's unseen).
- Ladder stitch the tail in place around the base.

18. THE EYE SHINES

- For that little extra sparkle, use your white fabric paint to paint small dots in the corner of each eye and the nose (if desired).

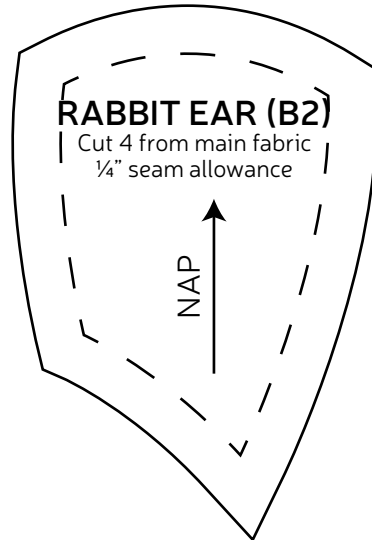
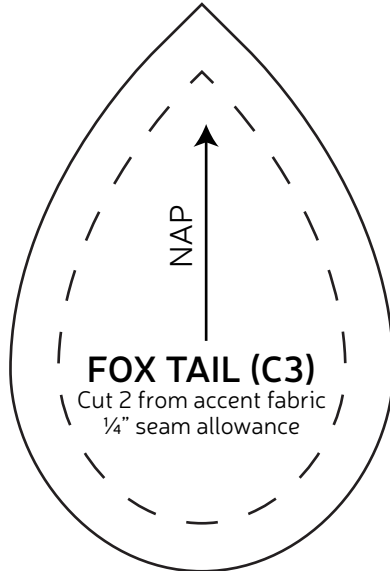
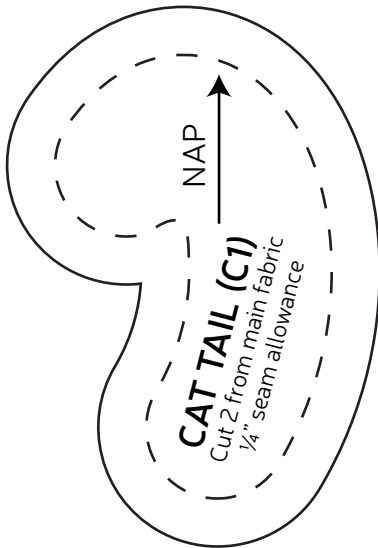
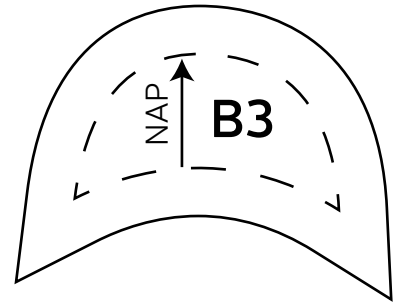
sew desu ne?

| WWW.CHOLYKNIGHT.COM |

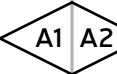


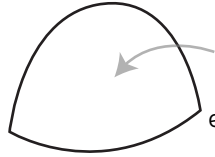
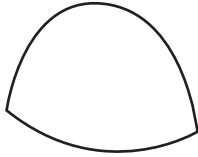
RABBIT EAR TIP (B3)

Cut 4 from accent fabric
1/4" seam allowance

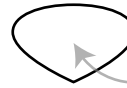


SCARF (D)
Cut 1 from fleece fabric

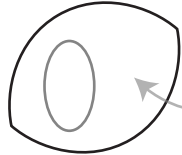
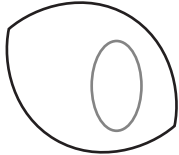




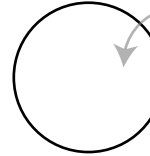
FOX EYES
applique
trace & cut 1
each from brown



LARGE NOSE
applique
trace & cut
1 from black

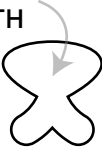


CAT EYES
applique
trace & cut
1 each

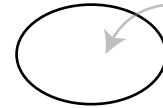


ROUND EYES
applique
trace & cut
2 from black

SWEET MOUTH
applique
trace & cut
1 from pink



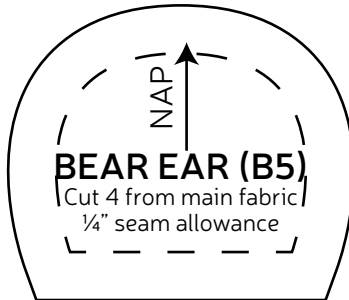
SMALL NOSE
applique
trace & cut
1 from pink



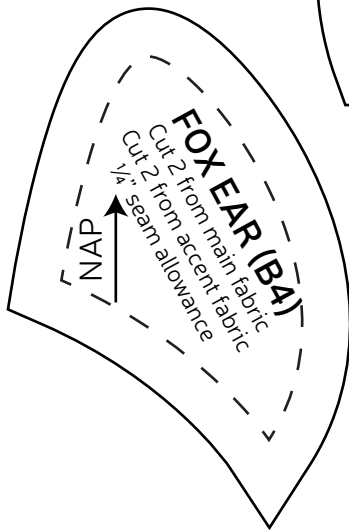
BLUSH
applique
trace & cut
2 from pink



PUPIL
applique
trace & cut
2 from black



BEAR EAR (B5)
Cut 4 from main fabric
1/4" seam allowance



FOX EAR (BA)
Cut 2 from main fabric
Cut 2 from accent fabric
1/4" seam allowance



**RABBIT/BEAR
TAIL (C2)**
Cut 1 from main fabric
1/4" seam allowance