

bat & cat girl



doll plush

A FREE SEWING PATTERN BY



bat & cat girl doll plush

This cute doll has simple body parts and streamlined features that make it faster to get to the fun dressing-up!

The mischievous pair here are ready to trick-or-treat as a cute bat & cat, complete with easy cotton dresses and sweet animal ear hats.

DIFFICULTY:



The hardest part of this plush is likely attaching all the small pieces. But if you baste the pieces first and check your placement before moving on you'll certainly have success.



materials & tools:

- ¼ yd. of fabric for body
- ¼ yd. or 9" x 15" piece of accent fabric for hair
- 1/8 yd. or 5" x 5" piece of accent fabric for shorts
- 1/8 yd. or 5" x 5" piece of accent fabric for shoes
- optional: ¼ yd. or 7" x 12" piece of accent fabric for wings or tail
- ¼ yd. or 8" x 12" piece of stretchy apparel fabric for hat
- ¼ yd. or 8" x 13" piece of cotton fabric for dress
- 50" of ¼" wide ribbon for dress
- 3" x 3" piece of black applique fabric (such as cotton, felt, or flannel) for eyes and mouth
- 2" x 2" piece of white applique fabric for eye shines
- 2" x 2" piece of accent applique fabric for eye highlights
- 6" x 6" piece of light or heavy duty fusible web
- sewing thread to match main fabric and applique fabrics
- poly-fil stuffing
- basic sewing tools (sewing machine, scissors, iron, needles, pins, fabric marker, seam ripper)

SKILLS USED:

- Fusible web applique
- Curved sewing
- Basting
- Darts
- Ladder stitch
- Hemming

MAKES:

One doll: about 9" tall and 5" wide
And one hat & dress to fit

sew desu ne?

| WWW.CHOLYKNIGHT.COM |



MAIN BODY SUGGESTED FABRICS:

Plush, stretchy fabrics such as fleece or minky are suggested. The variations of fleece and minky mentioned to the left would work well, but really any plushy fabric with a bit of stretch on the crosswise grain would be well-suited.

Stretch fabrics like **FLEECE** or **MINKY** will create a more squat, round shape when stuffed. Non-stretchy fabrics, like **FELT** or **COTTON**, won't stretch when stuffed so the resulting plush will look elongated as shown.

MINKY

VS.

FELT



HAT

SUGGESTED FABRICS:

Medium-weight stretchy fabrics like fleece or interlock knit would work well for this part. The fabric needs to stretch around the finished doll's head.



DRESS

SUGGESTED FABRICS:

This part is more flexible. Anything from light to medium-weight knit or woven fabrics would work well for this dress. This would be a perfect time to utilize some fun Halloween cotton prints.

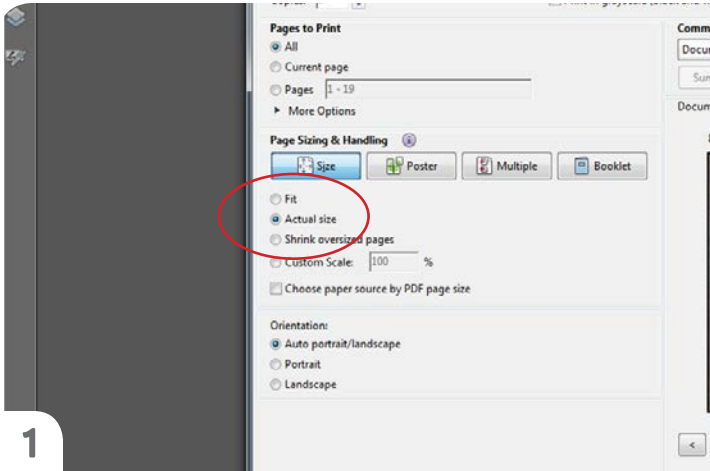


sew desu ne?

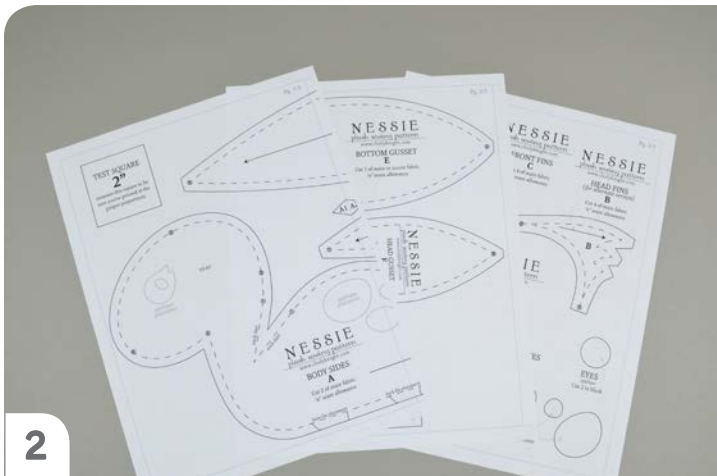
| WWW.CHOLYKNIGHT.COM |

printing the pattern:

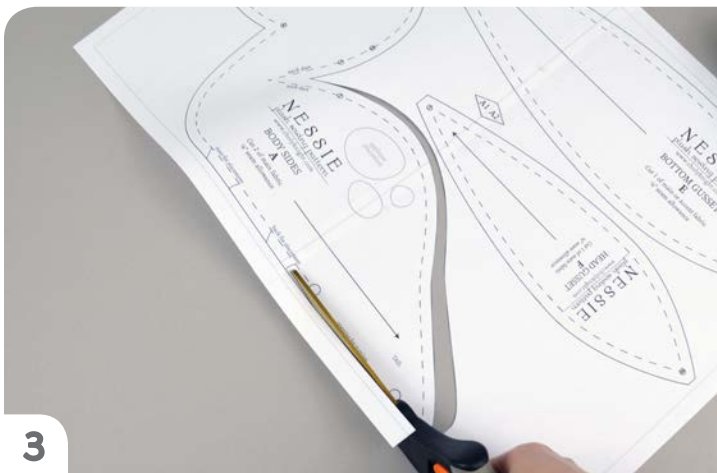
To print the pattern, set your computer to print **PAGES 23-26**. If you're unfamiliar with printing and assembling a .pdf pattern, read the steps below.



At the print dialog box, check the box that says print at “Actual Size” or 100%. Any other selection (such as “Fit to page”) will distort the pattern so it's slightly larger or smaller and we don't want that.



Print the pages needed for the file. You might have one or more. Either way, be sure you have the full collection by noting the page numbers in the corner.

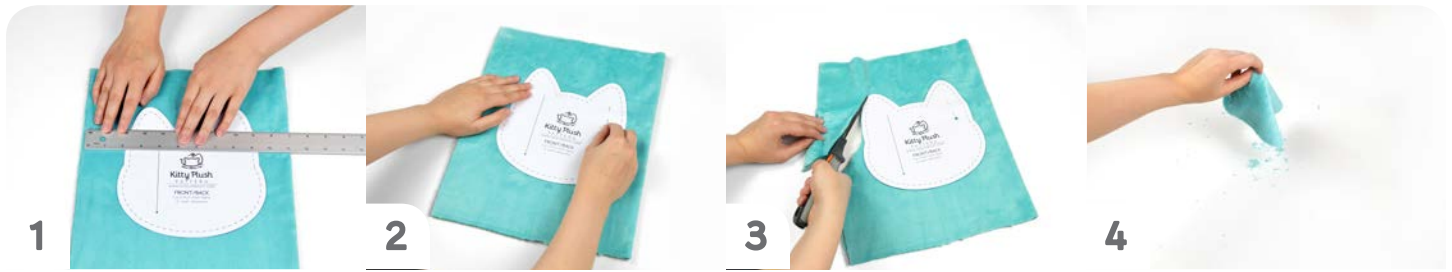


You can trace the patterns onto a different paper, or you can also just cut them straight from the printer paper. They might be a little hard to pin through, so you might want to use your longest pins. But you could also use pattern weights or trace the outlines onto the fabric with a washable marker and cut them out from there.

sew desu ne?

| WWW.CHOLYKNIGHT.COM |

cutting the fabric:



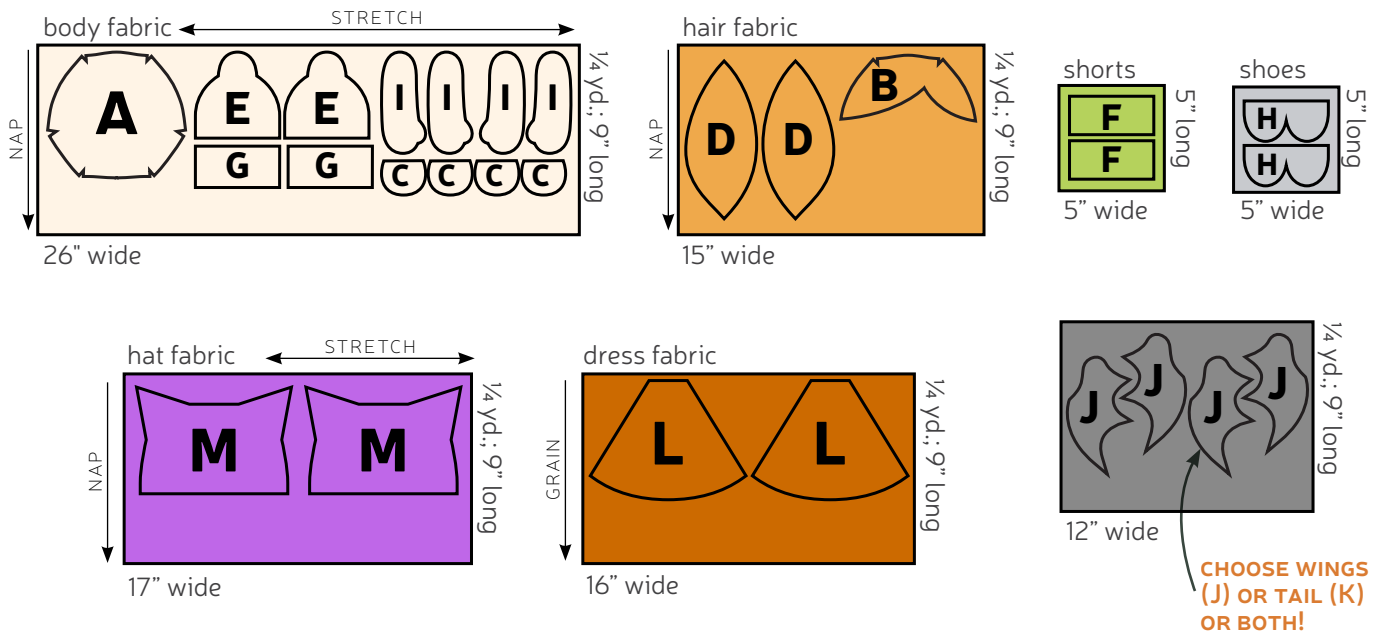
1 Place pattern on the fabric, and make sure the stretch line matches the stretch of the fabric. The nap line should go in the direction of the fur.

2 Pin the pattern in place, use pattern weights, or trace the outline of the pattern with a washable marker.

3 Using the paper as a template, cut out the fabric. Cut the required amount according to the pattern.

4 For all fur fabrics, shake the excess fuzz away.

cutting layout:

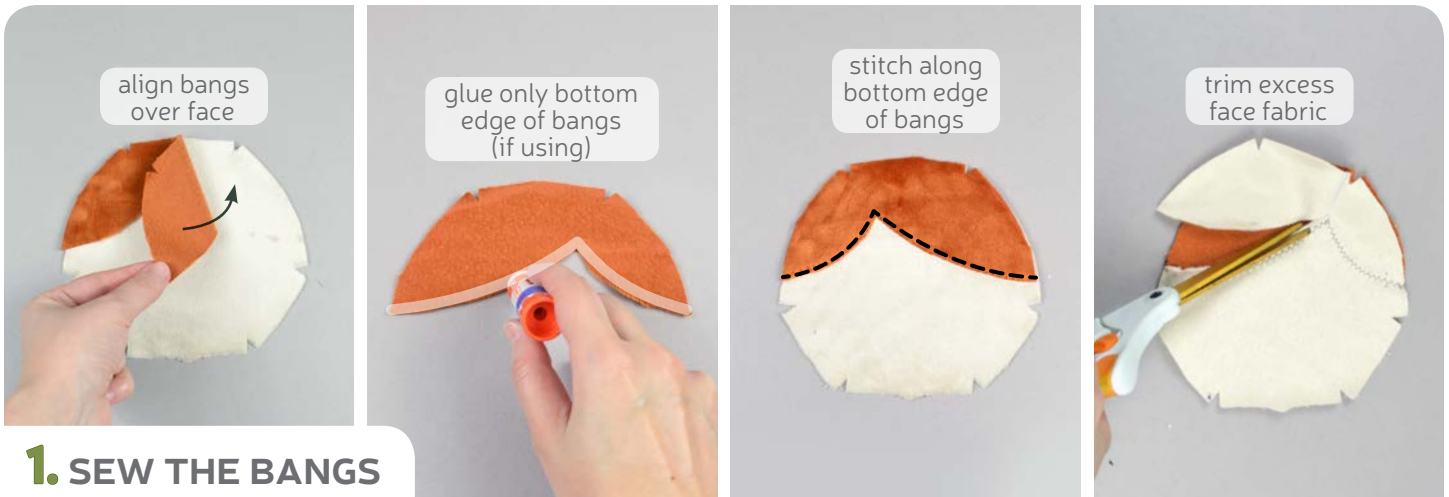


BEFORE YOU BEGIN:

- Briefly read the project instructions so you know what to expect.
- If desired, mark the cut fabric pieces with the markings and symbols from the pattern. Or wait until the applicable step before transferring.
- Note that the seam allowance used is $\frac{1}{4}$ " throughout the project.

sew desu ne?

| WWW.CHOLYKNIGHT.COM |



1. SEW THE BANGS

- Grab your **FACE (A)** and **BANGS (B)** pieces. The bangs overlap right on top of the face across the upper half as shown. Place it right side up with the upper edges aligning.
- To secure the bangs, you can use pins or a bit of fabric glue. If you use glue, be sure to apply it only on the wrong side of the curved edge as shown. This will avoid getting excess glue on any other part of your project.
- Stitch the bangs to the face along the bottom curved edge using either a straight stitch close to the edge or a zigzag stitch that covers the edge.
- OPTIONAL:** to make sewing the head darts easier (later in step 4), trim away the excess face fabric from behind the hair. Cut about $\frac{1}{4}$ " away from the stitching.



2. PREPARE THE FACE APPLIQUE

- Grab your fusible web and trace all of your applique pieces onto the smooth (paper) side. You should have two eyes, two eye shines, two eye highlights, a smile, and a fang.
- Fuse the bumpy (adhesive) side onto the wrong side of your applique fabric. The eyes and smile should go on black, the eye highlights on an accent color, and the fang and eye shines on white.
- Cut out the eyes and arrange them on the **FACE (A)** piece. Set your paper pattern on top of the fabric piece (right sides up). Align the eye piece on top where the placement markings are. Then carefully pull the paper pattern away while holding the applique piece in place.

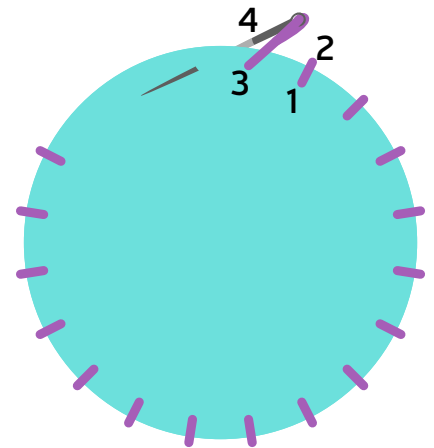
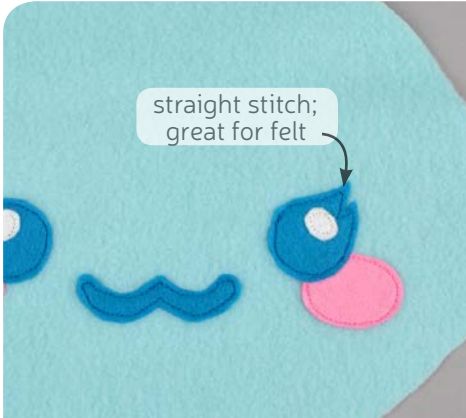
sew desu ne?

| WWW.CHOLYKNIGHT.COM |



3. FUSE THE APPLIQUE

- Fuse the eye piece in place with your iron.
- Next, move onto the smaller pieces. Fuse them the same way as you did the eyes, using the paper pattern and photos as a guide.
- If you used heavy duty fusible web, you can keep the pieces fused without sewing, or you can sew them in place a number of ways. I've used a zigzag stitch here.
 - Refer to the next step for some other applique options.

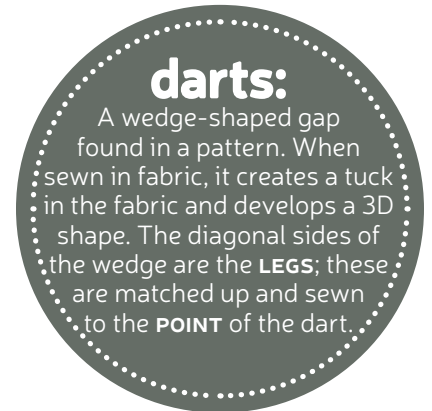


3a. OTHER APPLIQUE OPTIONS

- Other good options for applique include a straight stitch, which involves sewing around the edge of the applique pieces with a straight stitch using matching thread -- about 1/8" in from the edge.
- You can also applique by hand; I prefer a whipstitch. Thread a hand-sewing needle with some matching thread and knot it. Bring the thread up from the back of the project; about 1/8" in from the edge of the applique shape. Bring it down perpendicular from the curve, just outside of the applique shape. This completes one stitch.
- For the next stitch, bring the needle back up about 1/8" away from the previous stitch and 1/8" in from the edge just as in the first stitch. Once again, bring it down just outside the applique shape. Continue this way until you've sewn around the shape.

sew desu ne?

| WWW.CHOLYKNIGHT.COM |



4. SEW THE HEAD DART

- Find the small open wedge shapes all around the outside of the **FACE (A)** piece. These are **darts**. To sew the first one, fold the face along the point of the wedge to match up the short slanted lines.
- Next, sew along this edge. Start at the opening of the dart and move down to the point. Try to blend the seam into the fold of the fabric for a smooth transition and a rounder finished plush.

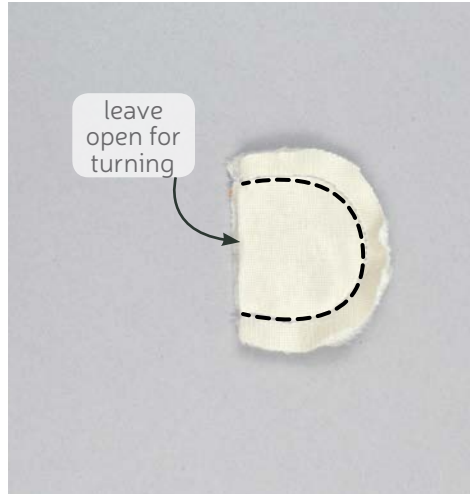
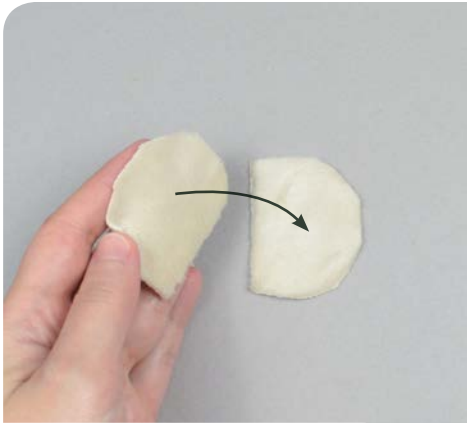


5. FINISH THE HEAD DARTS

- When the dart is complete it should look something as shown. You'll see the face start to take shape.
- Repeat step 4 with the other 5 darts around the outside of the face piece.
- When complete there should be 6 finished darts total and the face will make a dome shape.

sew desu ne?

| WWW.CHOLYKNIGHT.COM |



6. SEW THE EARS

- Grab your **EAR** pieces (C). Take two of them and align them with right sides facing and raw edges matching up.
- Sew the ears together around the curved edge. Leave the straight edge free for turning the ear right side out.
- Turn the ear right side out through the opening you left. Repeat this with the other two ear pieces for two complete ears total.



7. BASTE THE EARS

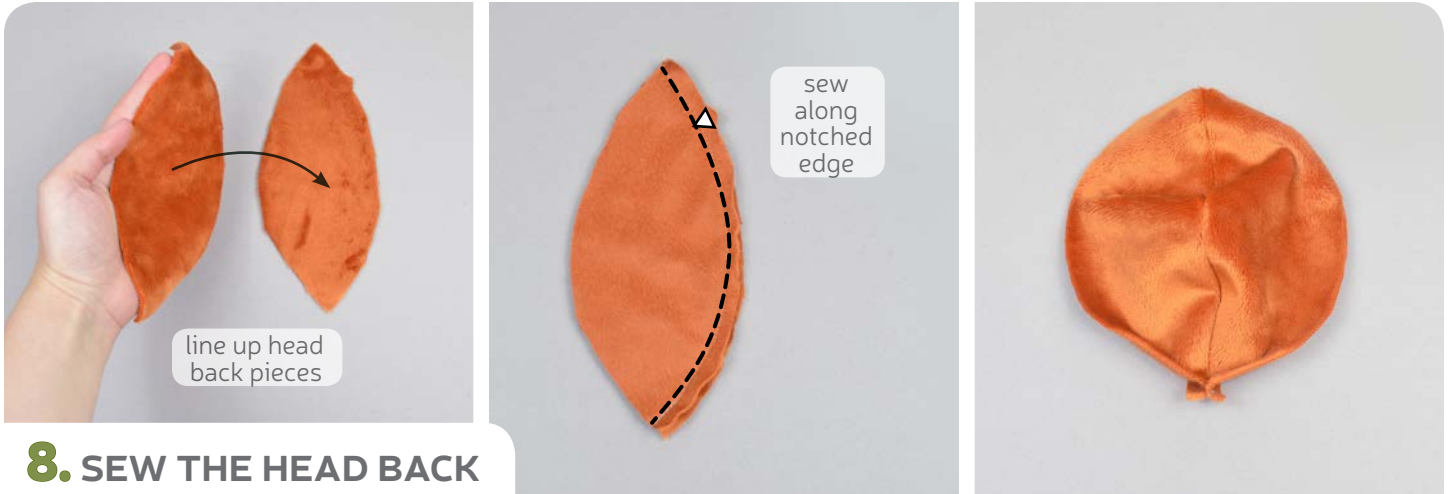
- If you haven't already, locate the **ear placement lines** found on the paper pattern for the **FACE** (A). Transfer them over to the right side of the fabric. Take the finished ear and align the open end within the placement lines. They should overlap the **dart** nearest to the eye.
- Baste the ear to the face within the seam allowance to hold it for future steps.

basting:

A form of temporary sewing meant to hold pieces in place. A long stitch length is often used for this reason. The finished result is not meant to be seen and sometimes is even removed later (depending on your project).

sew desu ne?

| WWW.CHOLYKNIGHT.COM |



8. SEW THE HEAD BACK

- Grab your **HEAD BACK** pieces (D). Align the two pieces together with right sides facing and raw edges matching up.
- Sew the two pieces together along the **notched** edge. This notch is located on the paper pattern to help you differentiate the two sides.
- When complete, open up the head back pieces.



9. SEW THE HEAD

- Retrieve your **FACE** (A) from before. Take your **HEAD BACK** (D) and align it over the face with right sides facing. The **circle marking** at the top of the head back should line up with the **circle marking** on the face and the **BANGS** (B).
The bottom of the head back should line up with the **notch** along the bottom of the face.
- If you haven't already, locate the **opening for turning markings** found on the paper pattern for the face. Transfer them over to the wrong side of the fabric. Sew the head back to the face all the way around, except for the opening near the bottom.
- Turn the head right side out and stuff it firmly with stuffing. Use enough that the head looks round and there are no wrinkles near the seams and darts. Set the head aside while we work on the body.

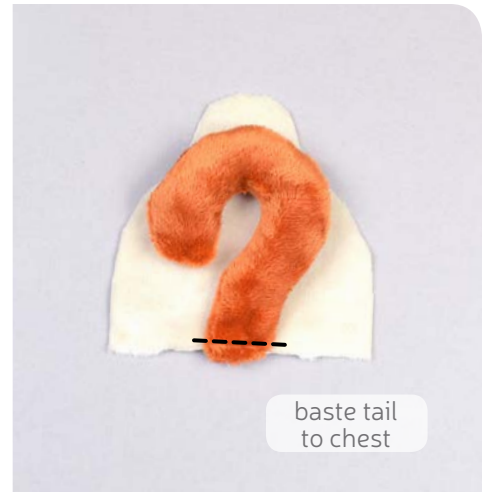
sew desu ne?

| WWW.CHOLYKNIGHT.COM |



10. SEW THE TAIL

- Grab your **CAT TAIL** (K) pieces and align them with right sides facing and raw edges matching up.
- Sew the tail along the long curved edge. Leave the short straight edge free for turning the tail later.
- Trim the excess seam allowance at the tight curve near the inside of the tail. This will increase flexibility when the tail is turned later.



11. BASTE THE TAIL

- Turn the **TAIL** (K) right side out.
- Stuff the tail very lightly with stuffing, just enough so it puffs a bit. This will make step 15 easier.
- Grab your **CHEST** piece (E). Take the open end of the tail and center it along the straight edge of the chest. Baste the tail to the chest within the seam allowance to hold it for future steps.

sew desu ne?

| WWW.CHOLYKNIGHT.COM |



12. SEW THE SHORTS

- Grab your **CHEST** (E) and **SHORTS** (F) pieces. Take one of each and align the straight edge of the chest with the longer straight edge of the shorts. Right sides should be facing and the raw edges should match up.
 - If you have a cat tail, it should be sandwiched between the shorts and chest at this point.
- Sew the chest to the shorts along this straight edge.
- Open up the pieces when complete. Repeat with the remaining shorts and chest piece for both sides of the body.



13. SEW THE SHOES

- Grab your **LEGS** (G) and **SHOES** (H) pieces. Take one of each and align the straight edge of the shoes with the longer straight edge of the legs. Right sides should be facing and the raw edges should match up.
- Sew them together along this straight edge.
- Open up the pieces when complete. Repeat with the remaining leg and shoe pieces for both halves of the body.

sew desu ne?

| WWW.CHOLYKNIGHT.COM |



14. SEW THE LEGS

- Grab all of your body pieces so far from the last 2 steps. Take one of the **CHEST/SHORTS** pieces (E/F) and align the bottom edge of the shorts to the top edge of the **LEGS/SHOES** (G/H). Make sure right sides are facing and the raw edges match up.
- Sew the bottom half of the body to the top along this straight edge.
- Open up the pieces when complete and repeat with the remaining body pieces so you have both sides of the body.



15. SEW THE BODY

- To make sewing the body a little easier, it helps to press the seams open lightly with an iron. If you're using a fur fabric like minky, press very gently from the wrong side using just the tip of the iron. This will avoid crushing the fur on the outside of the finished doll.
- Take your two body pieces and align them with right sides facing and raw edges matching up. Pin the seams along the shorts & legs to be sure they match up. The seam line between the legs is a little tricky, so included in the paper pattern is a **seam guide**. Center this piece onto the legs and trace along the outside to get the correct stitching guide.
- If you haven't already, locate the **opening for turning marking** on the paper pattern for the **CHEST** (E). Transfer it over to the wrong side of the fabric. Sew the body pieces together following the traced line along the legs, but leave an opening on the side you just marked.

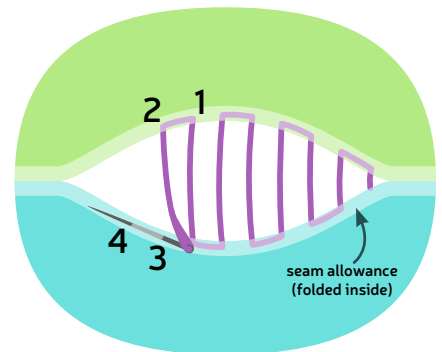
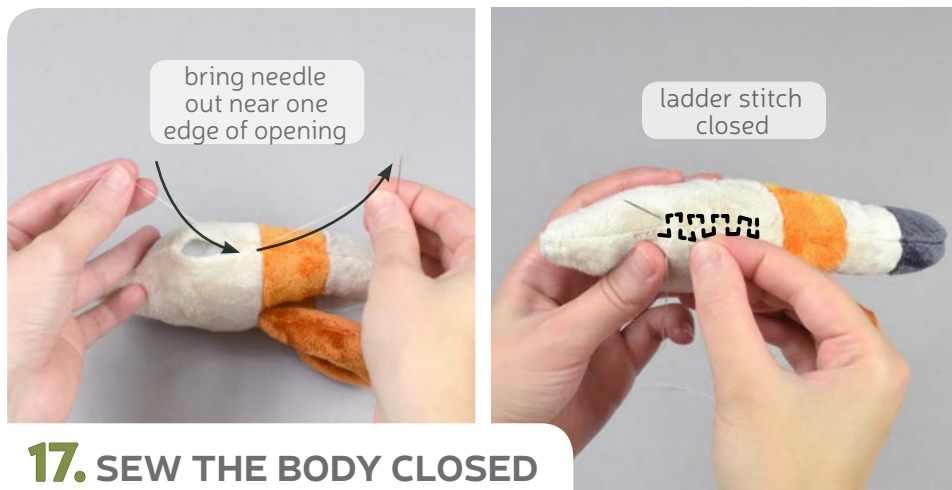
sew desu ne?

| WWW.CHOLYKNIGHT.COM |



16. STUFF BODY

- Clip the seam allowance between the legs you've just sewn. Make a few clips into the inner curve to be certain the pieces will turn cleanly.
- Turn the body right side out through the opening in the side.
- Stuff the body firmly with stuffing, starting with small balls in the feet and working up to the neck.



17. SEW THE BODY CLOSED

- Make sure the seam allowances in the opening are tucked inside and prepare to ladder stitch it closed. Thread a hand-sewing needle and knot it at the end. Insert the needle from the inside of the opening and out of the plush near one edge of the opening. This will leave the knot inside the doll.
- Continue from here doing a ladder stitch. Take a 1/8" stitch into the fold of one side of the opening, then go across and take another. Keep going down the opening until you reach the end.

sew desu ne?

| WWW.CHOLYKNIGHT.COM |



18. TRIM THE THREADS



- When you're finished, stitch a knot into the end of the seam. Then insert the needle near the finished knot and out of the doll about 1-2" away.
- Pull the thread through and hold it taut while snipping the thread. The excess thread should sink back inside the doll -- all hidden!



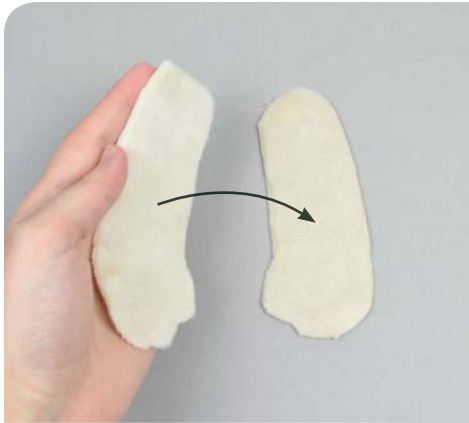
19. ATTACH THE HEAD



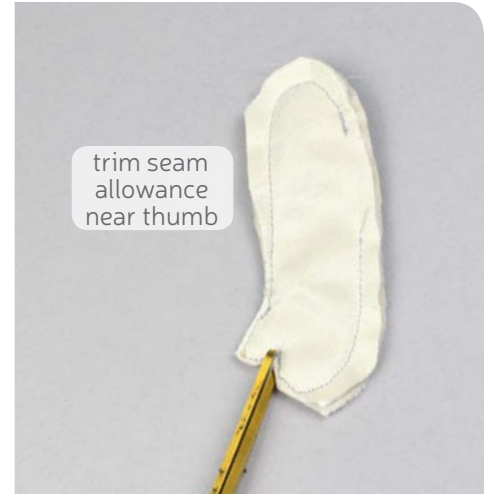
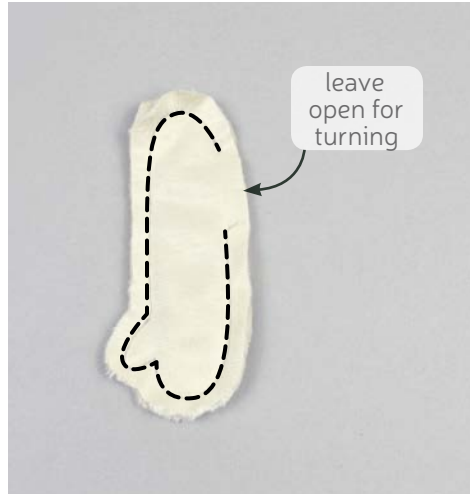
- Insert the neck end of the body into the head through the opening in the head. You may want to push the stuffing in the head out of the way to make room. Make sure the head is centered on the neck and looking forward.
- From here, ladder stitch the head opening to the neck. Start with big basting stitches going around the neck. Check the head to be sure you're happy with the placement. Then go around the neck again with tinier, neater stitches to secure it in place.

sew desu ne?

| WWW.CHOLYKNIGHT.COM |



20. SEW THE ARMS



- Grab your **ARM** pieces (1). Take two of them and align them with right sides facing and raw edges matching up.
- If you haven't already, locate the **opening for turning markings** found on the paper pattern for the arm. Transfer them over to the wrong side of the fabric. Sew the arms together all around the shape, being sure to pivot at the thumb. Leave an opening near the back shoulder area as you marked before.
- Trim the seam allowance around the thumb so it turns easier.



21. STUFF THE ARMS



- Turn the arm right side out through the opening in the side.
- Stuff the arm semi-firmly with stuffing. Be sure to get a small bit into the thumb.
- Sew the opening in the arm closed with a ladder stitch, similar to back in step 17. Repeat steps 20-21 once more with your remaining arm pieces so you have two complete arms total.

sew desu ne?

| WWW.CHOLYKNIGHT.COM |

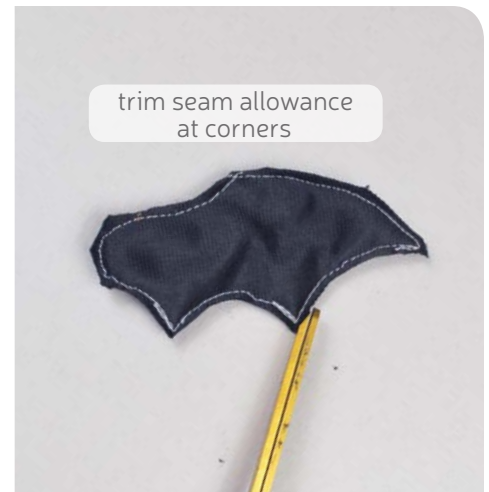


22. ATTACH THE ARMS

- Take one of your finished arms and align it over the shoulder area of your doll so far. It should be about $\frac{1}{4}$ " below the bottom of the head, or enough so the tips of the hands are a little below the bottom of the shorts. Also check that the thumbs are pointing forward.
- Sew the top 1" of the arms to the body using a ladder stitch. Stitch above the arm seam along the top edge of the shoulder. This will help the arm sink into the plush.
- As you work downward, flip the arm up and stitch from the underside of the arm to complete. Repeat with your other arm on the other side of the body.



23. SEW THE WINGS



- Grab your **WING** pieces (J). Take two of them and align them with right sides facing and raw edges matching up.
- Sew the wings together around the whole shape, being sure to pivot at the corners.
- Trim the excess seam allowance at the tight corners and curves. This will reduce bulk and increase flexibility when the wings are turned later.

sew desu ne?

| WWW.CHOLYKNIGHT.COM |



24. ATTACH THE WINGS

- To turn the **WINGS**, make small clips near the base of the wing through one layer of the fabric only. The paper pattern also has a cutting guide for help. Be sure to flip your second wing so you have a mirrored pair when you clip it.
- Turn the wings right side out through the opening you've just cut. Stuff the wings lightly with stuffing, just enough so they take shape.
- Take the wings and align them over the back of your doll, right next to the shoulders. The cut end should be facing down. Stitch the wings to the back around the cut you've made to complete.

SEWING THE DRESS



25. SEW THE SIDES

- Grab your **DRESS** pieces (L). Align them with right sides facing and raw edges matching up.
- If you haven't already, note the **circle marking** found on the paper pattern for the dress. Stitch one side of the dress along this edge, from the bottom up. Stop at the **circle marking** (this is for the arms later).
- Take this sewn seam and press the seams open with your iron. For the area that hasn't been sewn, fold over the edges by $\frac{1}{4}$ " and press those too so they're flat and crisp.

sew desu ne?

| WWW.CHOLYKNIGHT.COM |



26. HEM THE ARM HOLES

- Sew along the folded edge of the dress. Go down one side, stitch across, then go up the other side in a U shape. This should secure the part of this edge that hasn't been sewn into a seam and creates a finished armhole for your doll.
- Bring the other straight edges of the dress together and repeat step 25, sewing the side seam.
- Stitch along the open edge of the other side of the dress as shown. Both sides should have finished armholes when complete.



27. SEW THE TOP EDGE

- Flip your dress wrong side out. Take the top straight edge and fold it under by about 1/8" with wrong sides together. Press the fold so it's crisp.
- Fold the top edge again by 3/8" this time and press it again.
- Stitch along this folded edge to complete the top edge of the dress. Repeat this on the other side of the dress as well.

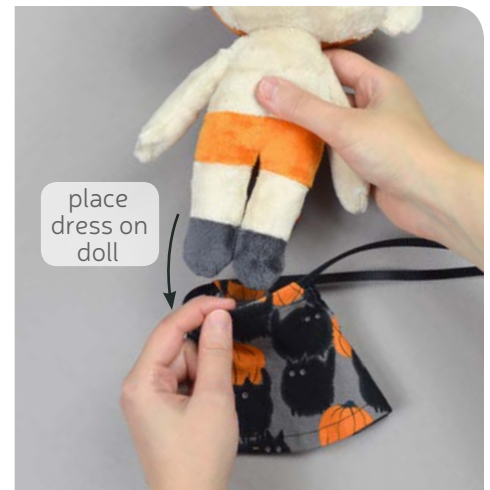
sew desu ne?

| WWW.CHOLYKNIGHT.COM |



28. SEW THE BOTTOM EDGE

- Fold under the bottom edge of the **DRESS** by $\frac{1}{2}$ ".
- Pin the fabric and press it in place. Because the edge is slightly curved, you may end up with some minor folds in the hem, but nothing major.
 - **TIP:** you can also make $\frac{3}{8}$ " cuts into the hem allowance of the dress edge, about 1-2" apart. Then the bottom edge will have little overlaps instead of little folds.
- Stitch along the edge of the fabric to secure the fold in place.



29. INSERT THE RIBBON

- Grab your ribbon and cut it in half into two equal 25" long pieces.
- Take your first piece of ribbon and insert it into the top slot of the dress. Use a safety pin or a bodkin if you have one to make this easier. Swing the ribbon around and insert it through the other top slot of the dress so it comes back around where you started.
- Keep the ribbon loose and place the dress on your doll. Allow the arms to sneak under the ribbon so the ribbon secures around the neck of the doll.

sew desu ne?

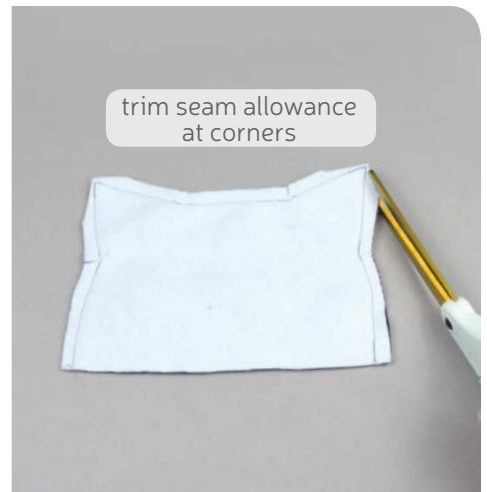
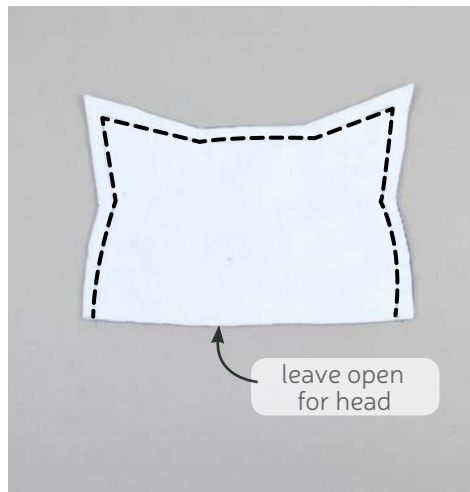
| WWW.CHOLYKNIGHT.COM |



- a. Take the ends of the ribbon and tie them along the side of the neck as shown.
- b. Take your remaining piece of ribbon and tie it around the waist. Secure it snugly with a bow in the back.

30. TIE THE RIBBON

SEWING THE HAT



- a. Grab your **HAT** pieces (L). Align them with right sides facing and raw edges matching up.
- b. Sew the pieces together along the pointed edge. Leave the straight edge along the bottom free for placing over the head.
- c. Trim the seam allowances at the outer corners to reduce bulk when the hat is turned later.

sew desu ne?

| WWW.CHOLYKNIGHT.COM |



fold under
by 1/2"



press fold in
place



stitch fold in
place

32. SEW THE HAT EDGE

- Turn under the bottom edge of the hat by 1/2". Press the fold in place.
- Stitch along the edge of the fabric to secure the fold and finish the bottom edge. For very stretchy fabric, like interlock knit, you may want to use a zigzag stitch which is more forgiving.
- Turn the hat right side out through the opening. Define the corners of the pointy ears with a chopstick or similar turning tool.



dress onto
your doll!

33. DRESS THE HAT

- Take your finished hat and dress it over your doll's head!


Congrats!
this completes
your plush! Now
go on a Halloween
adventure!



sew desu ne?

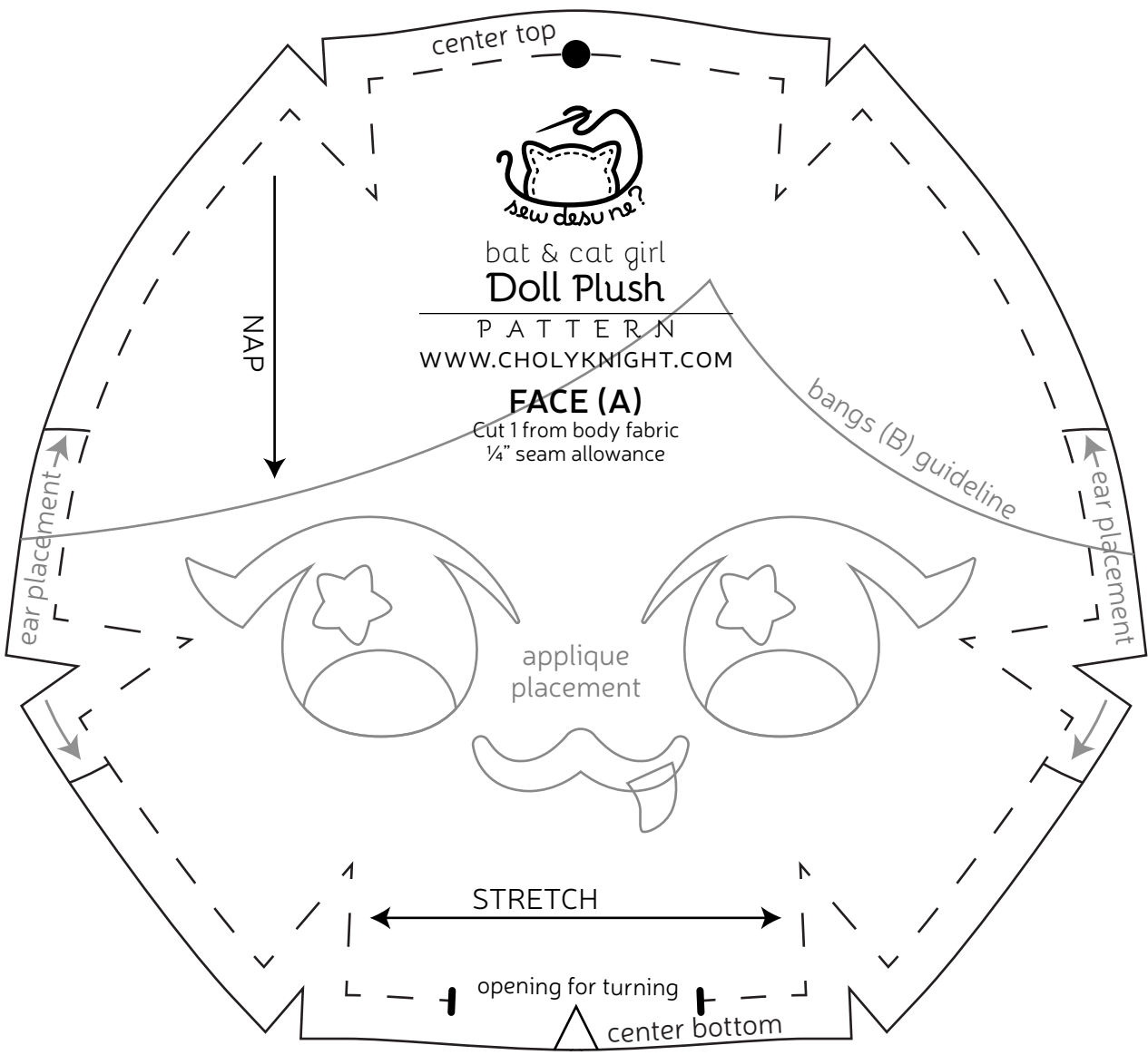
| WWW.CHOLYKNIGHT.COM |

center top

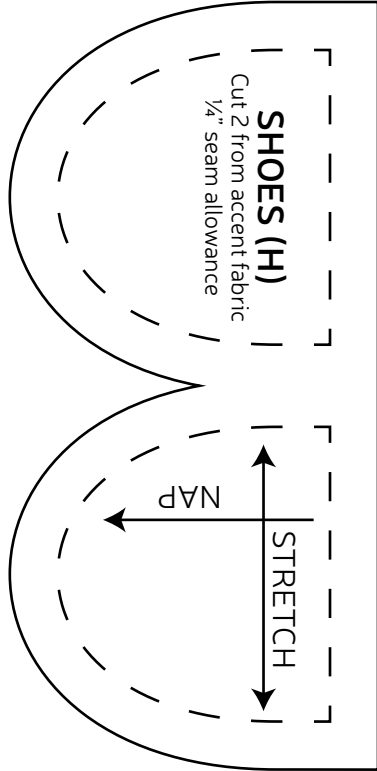


bat & cat girl
Doll Plush
 PATTERN
 WWW.CHOLYKNIGHT.COM

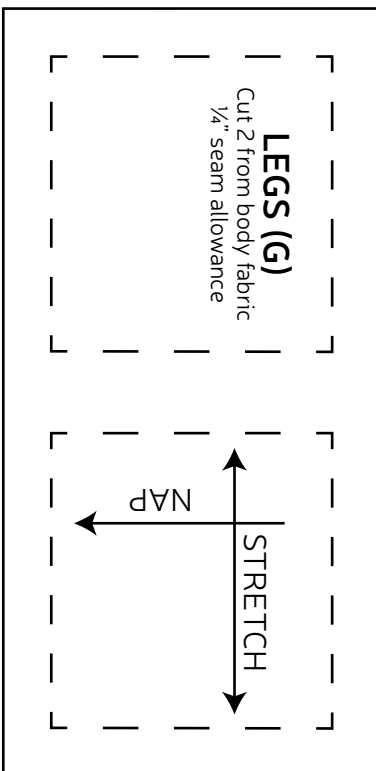
FACE (A)
 Cut 1 from body fabric
 1/4" seam allowance



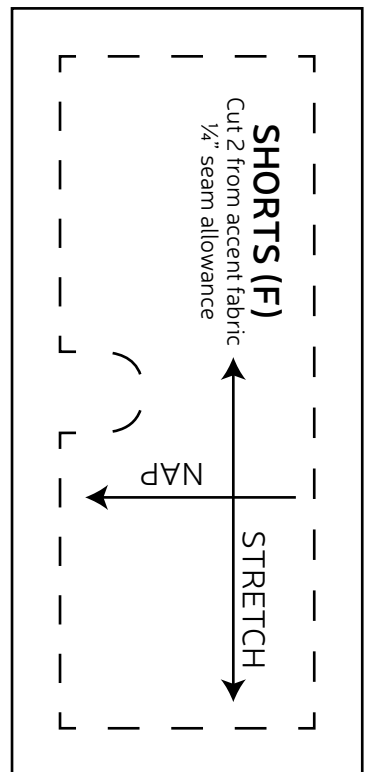
SHOES (H)
 Cut 2 from accent fabric
 1/4" seam allowance



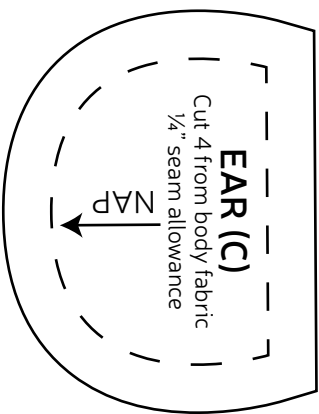
LEGS (G)
 Cut 2 from body fabric
 1/4" seam allowance

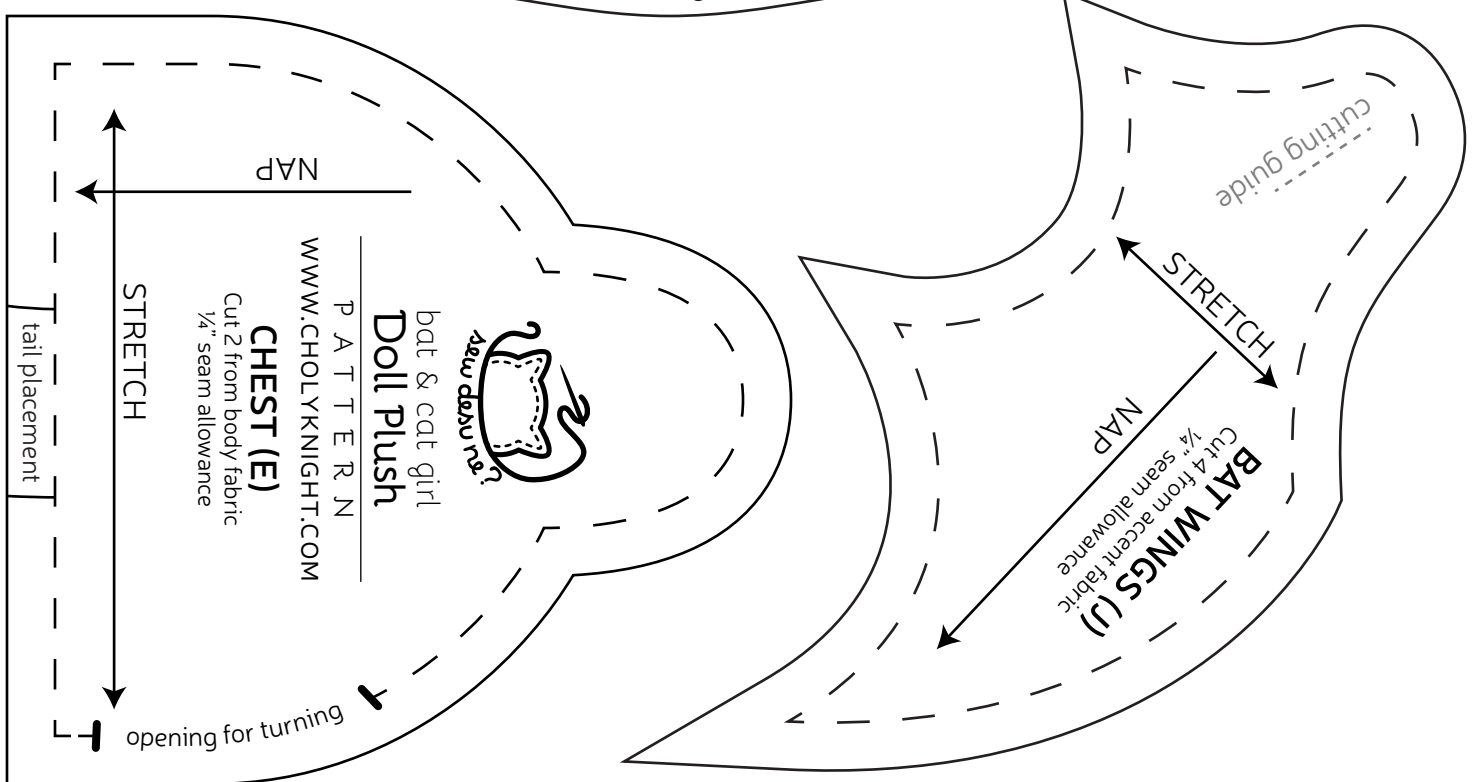
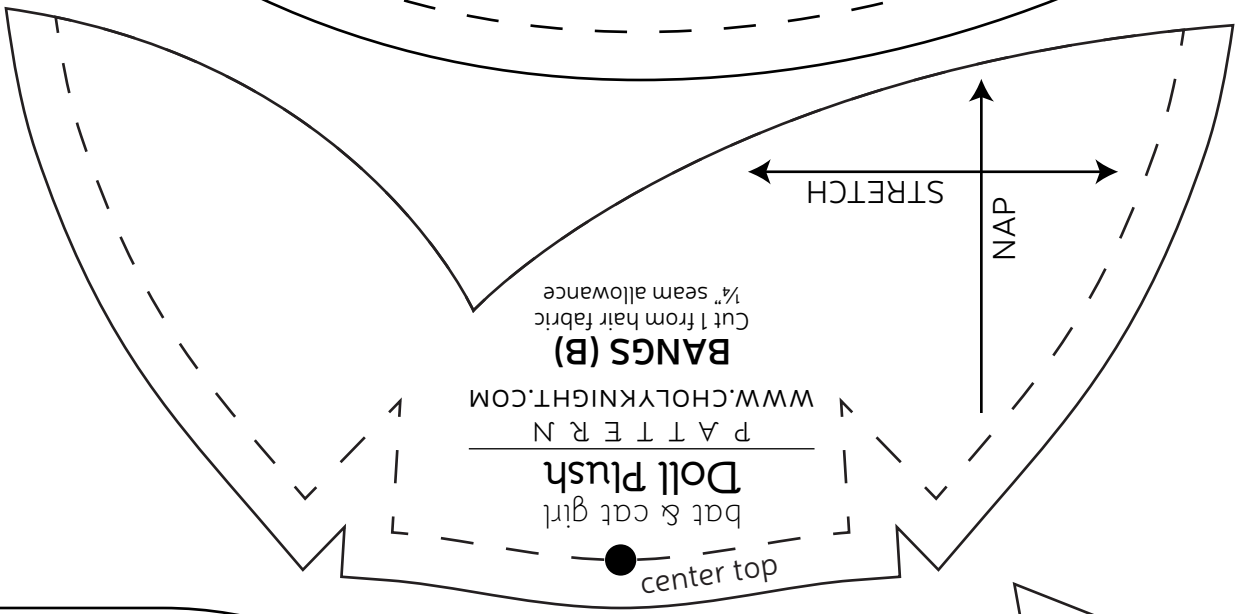
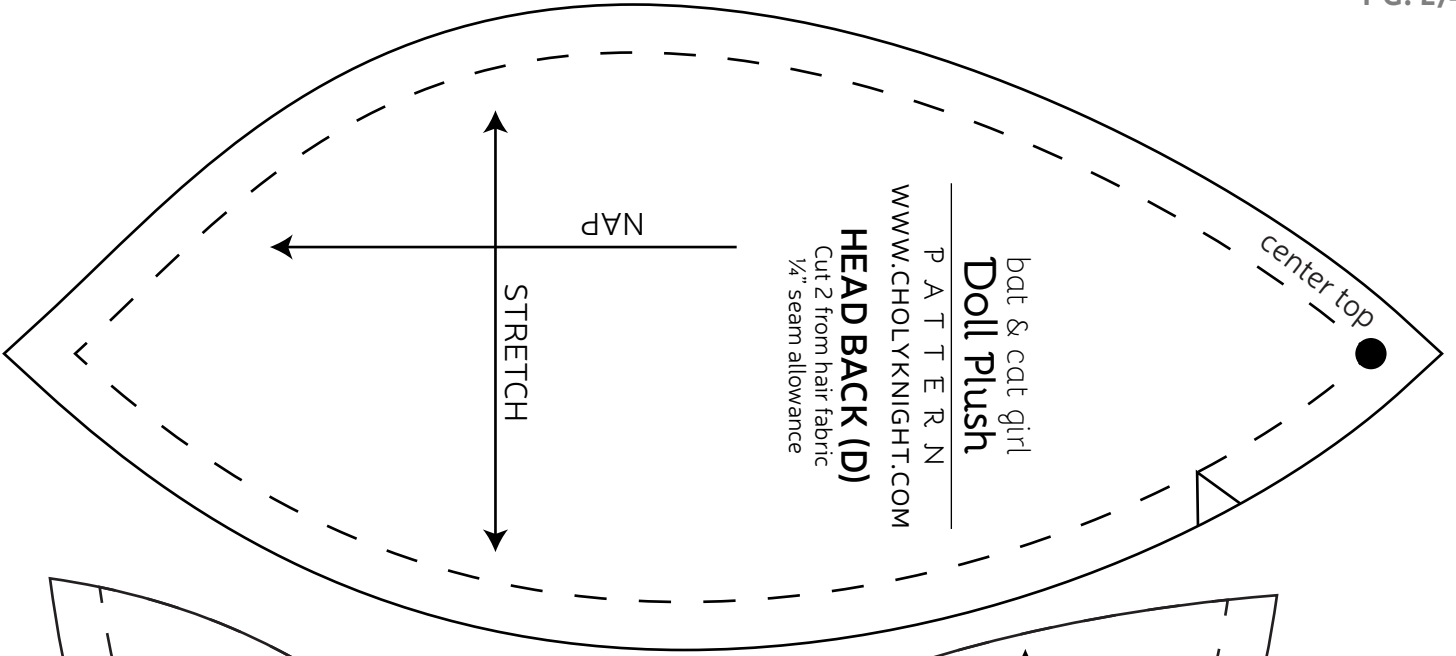


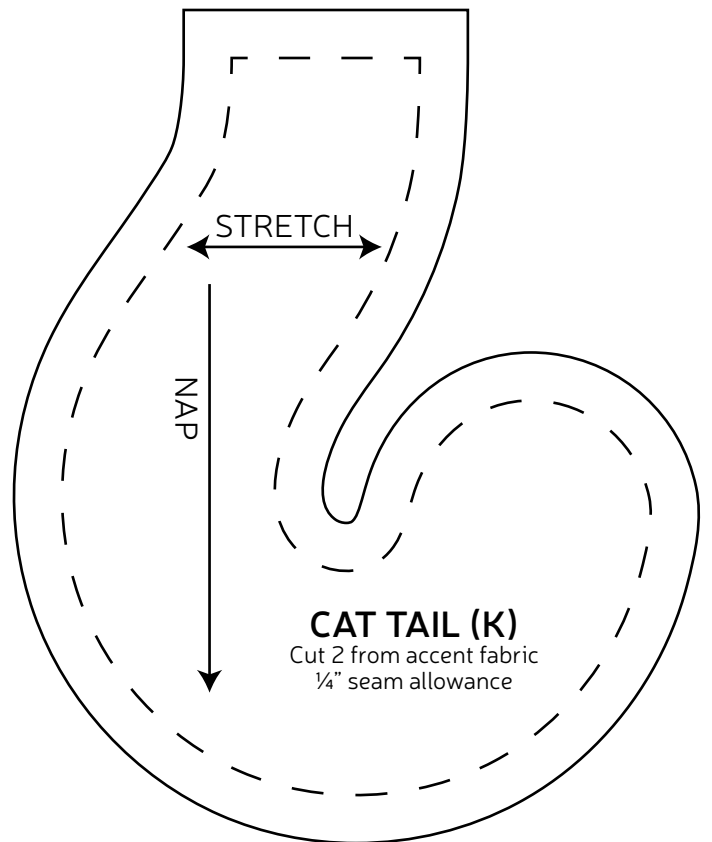
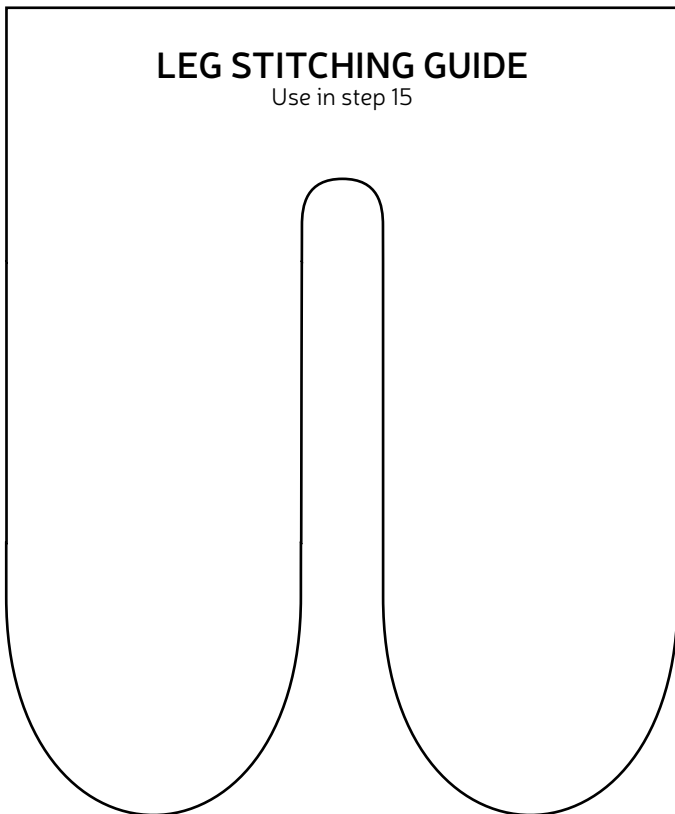
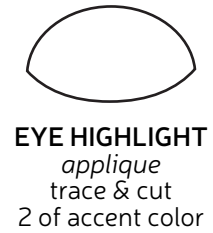
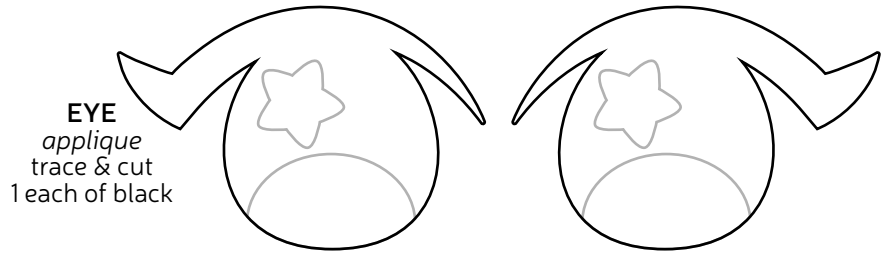
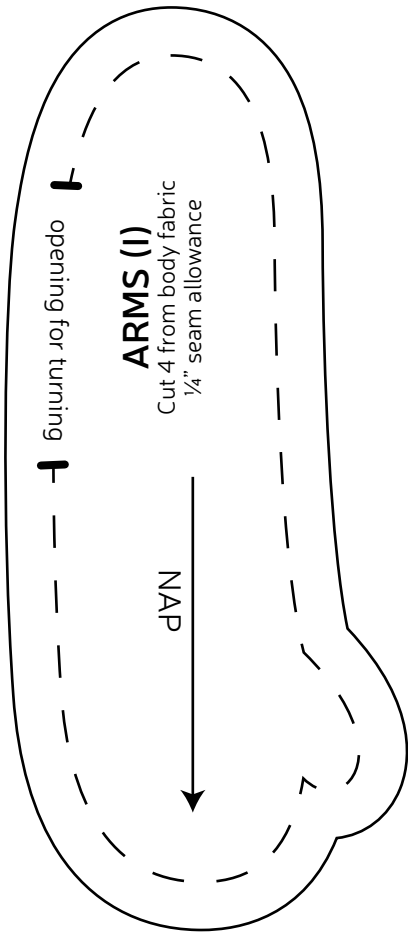
SHORTS (F)
 Cut 2 from accent fabric
 1/4" seam allowance

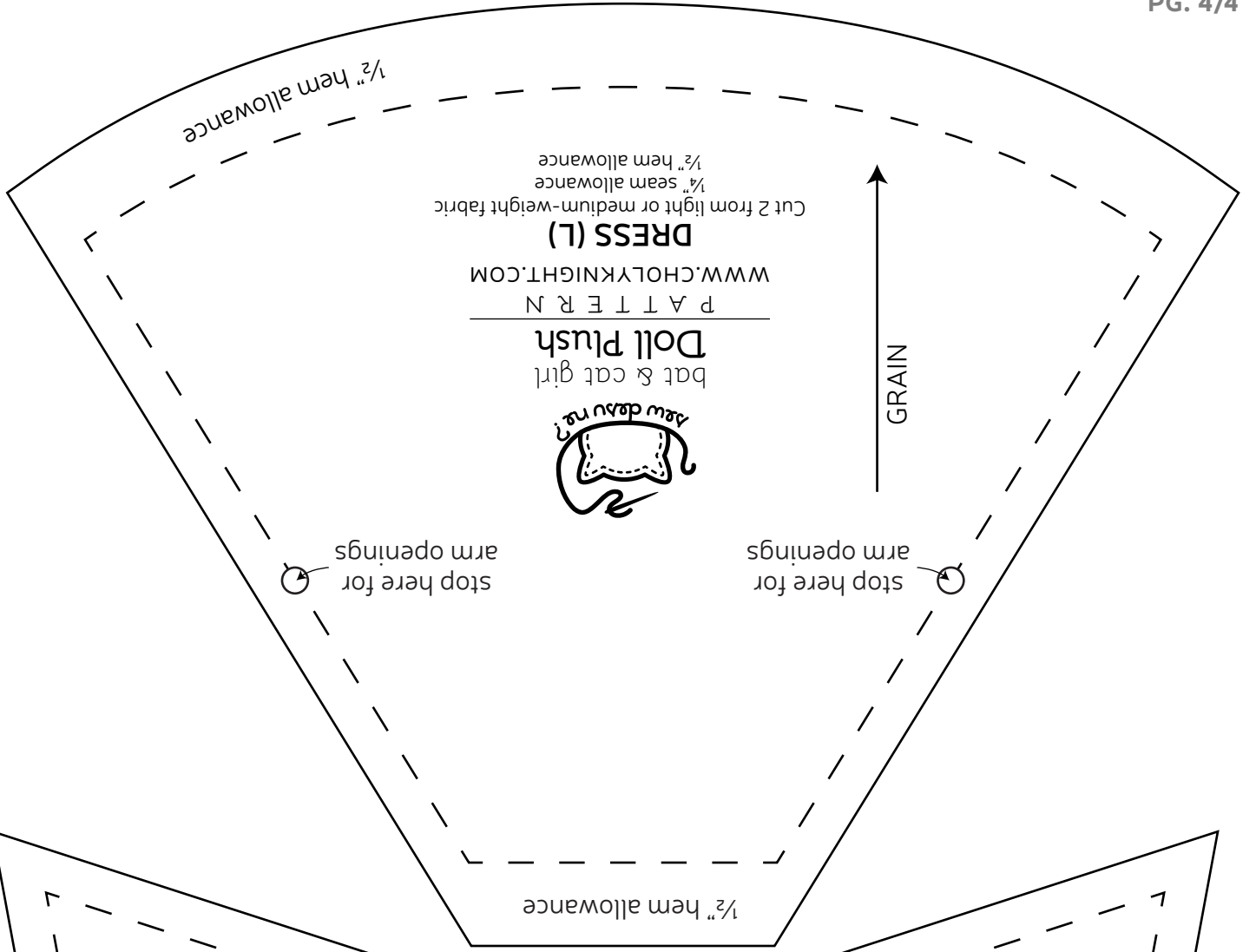


EAR (C)
 Cut 4 from body fabric
 1/4" seam allowance









Cut 2 from light or medium-weight fabric
 1/4" seam allowance
 1/2" hem allowance

DRESS (L)

P A T T E R N
 WWW.CHOLYKNIGHT.COM

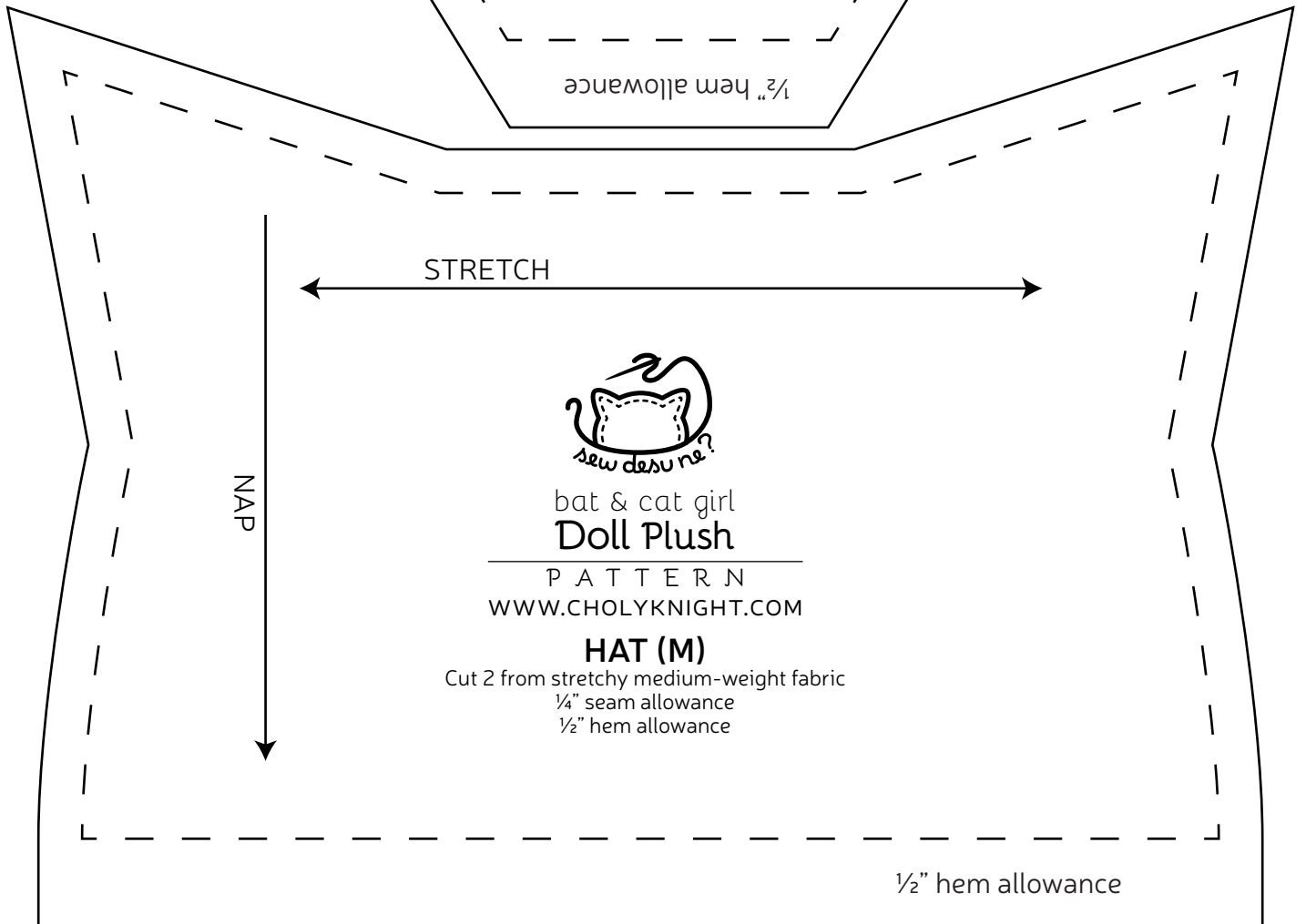
bat & cat girl
Doll Plush



stop here for
 arm openings

stop here for
 arm openings

1/2" hem allowance



STRETCH

NAP



bat & cat girl
Doll Plush

P A T T E R N
 WWW.CHOLYKNIGHT.COM

HAT (M)

Cut 2 from stretchy medium-weight fabric
 1/4" seam allowance
 1/2" hem allowance

1/2" hem allowance