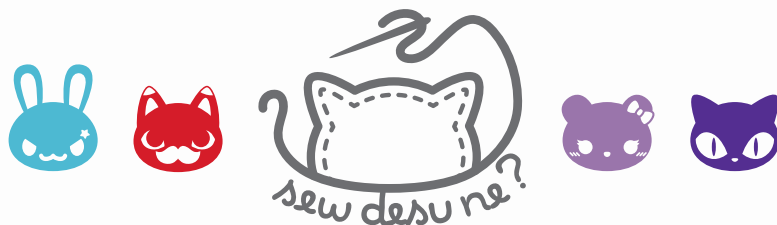


Jiji PLUSH



A FREE SEWING PATTERN BY



JII PLUSH

Any fan of Ghibli movies or Kiki's Delivery Service in particular is sure to recognize this adorable cat! With big playful eyes and a graceful sitting pose, this cute kitty can sit on its own as a sweet desk companion. While the classic Jiji is black, the instructions show it being made in purple so you can see what's happening better. But now you can see how great this versatile pattern looks in other colors for more kitties!

DIFFICULTY:



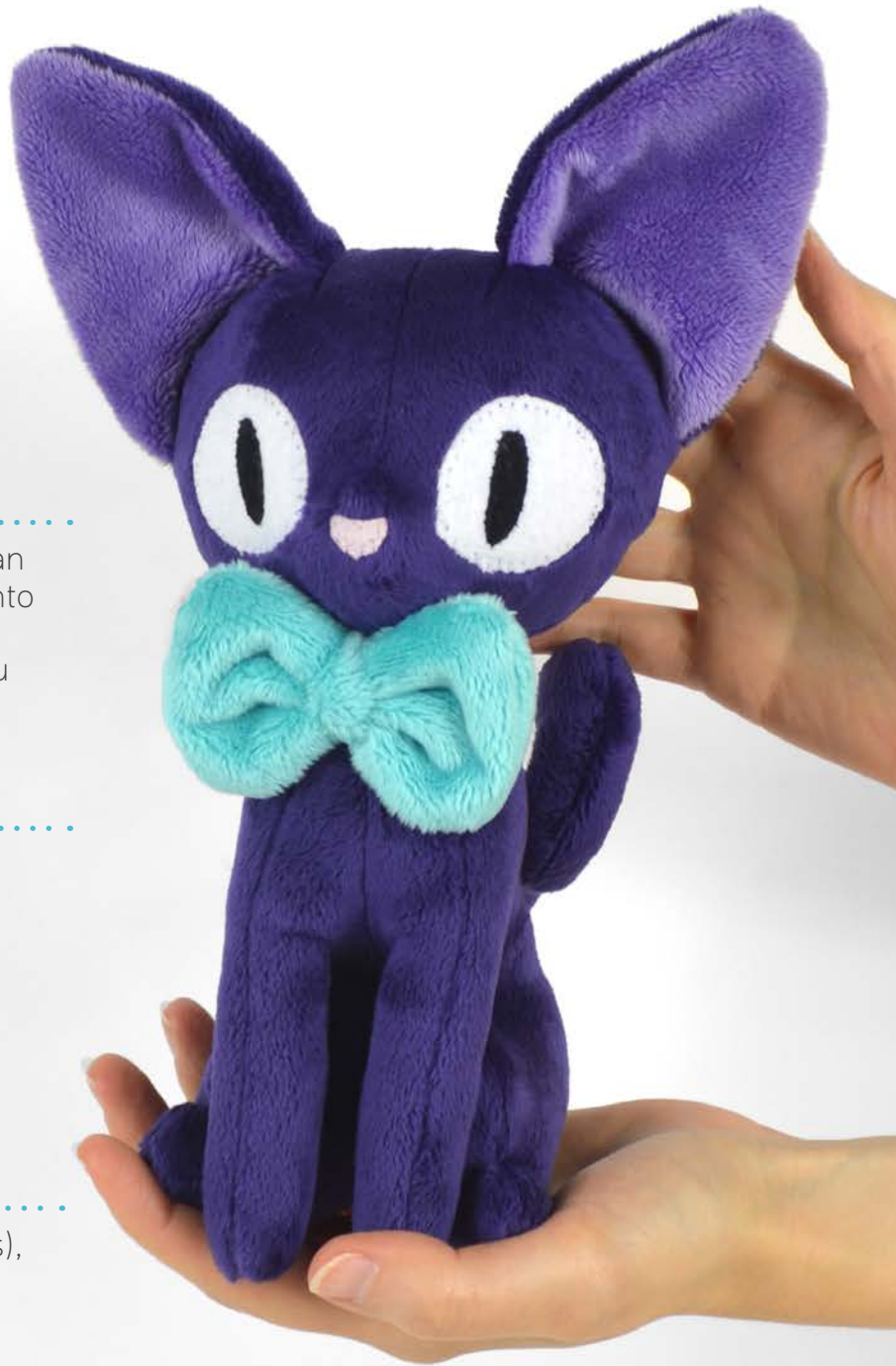
This plush has some detailed areas that can get challenging, including the ears sewn into the head darts and the front body gusset. Pay attention to your seam lines when you approach those areas.

SKILLS USED:

- Fusible web applique
- Curved sewing
- Basting
- Darts
- Ladder stitch
- Sewing small pieces
- Y-seams

MAKES:

One plush: about 8" tall (not including ears), 4½" wide and 4½" long (not including tail)



sew desu ne?

| WWW.CHOLYKNIGHT.COM |



materials & tools:

- ¼ yd. fabric for main body
- ⅛ yd. or 5" x 9" of accent fabric for inner ears
- 24" of ribbon for collar & bow
- **OR** ⅛ yd. or 5" x 8" of accent fabric for collar & bow
- 5" x 8" of scrap fabric for poly pellet pouch
- 3" x 3" piece of white applique fabric for eyes
- 2" x 2" piece of black applique fabric for pupils
- 1" x 1" piece of pink applique fabric for nose
- 5" x 5" piece of light or heavy duty fusible web
- sewing thread to match main fabric and applique fabrics
- poly-fil stuffing
- poly pellets for weight
- spoon or funnel for filling poly pellets
- basic sewing tools (sewing machine, scissors, iron, needles, pins, fabric marker, seam ripper)

SUGGESTED FABRICS:

Plush, stretchy fabrics such as fleece or minky are suggested. The variations of fleece and minky mentioned to the left would work well, but really any plushy fabric with a bit of stretch on the cross-wise grain would be well-suited. Stretch fabrics like **FLEECE** or **MINKY** will create a more squat, round shape when stuffed. Non-stretchy fabrics, like **FELT** or **COTTON**, won't stretch when stuffed so the resulting plush will look elongated as shown.



MINKY

VS.

FELT

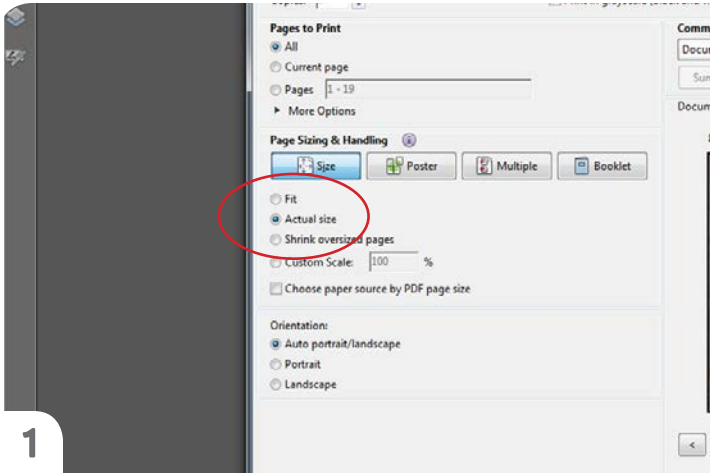


sew desu ne?

| WWW.CHOLYKNIGHT.COM |

printing the pattern:

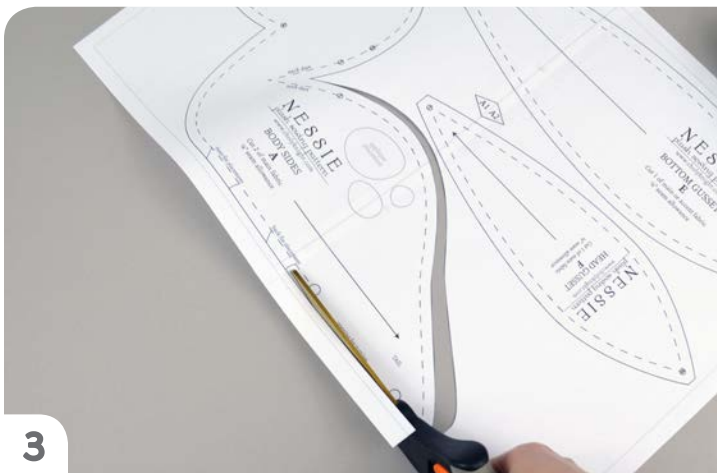
To print the pattern, set your computer to print **PAGES 21-23**. If you're unfamiliar with printing and assembling a .pdf pattern, read the steps below.



At the print dialog box, check the box that says print at “Actual Size” or 100%. Any other selection (such as “Fit to page”) will distort the pattern so it's slightly larger or smaller and we don't want that.



Print the pages needed for the file. You might have one or more. Either way, be sure you have the full collection by noting the page numbers in the corner.



You can trace the patterns onto a different paper, or you can also just cut them straight from the printer paper. They might be a little hard to pin through, so you might want to use your longest pins. But you could also use pattern weights or trace the outlines onto the fabric with a washable marker and cut them out from there.

sew desu ne?

| WWW.CHOLYKNIGHT.COM |

cutting the fabric:



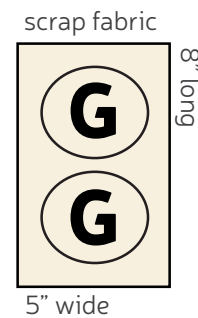
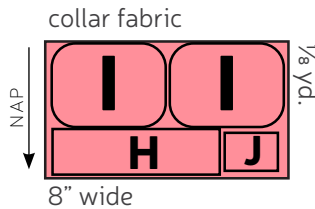
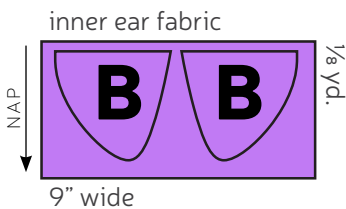
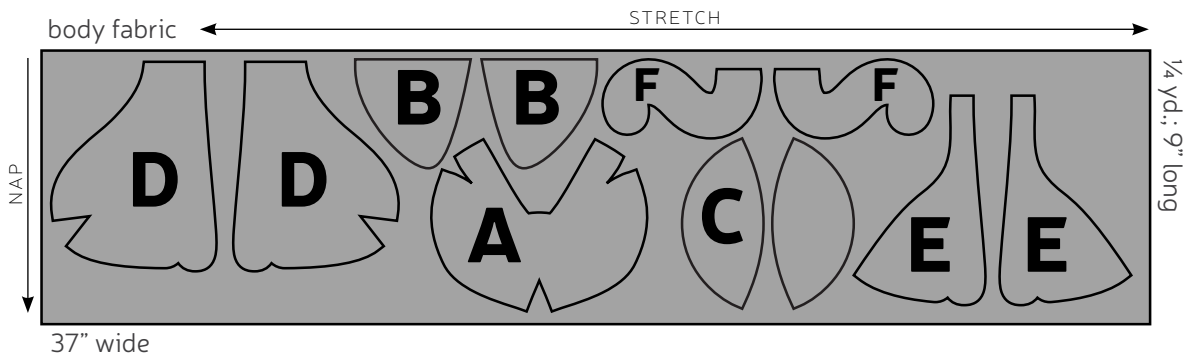
1 Place pattern on the fabric, and make sure the stretch line matches the stretch of the fabric. The nap line should go in the direction of the fur.

2 Pin the pattern in place, use pattern weights, or trace the outline of the pattern with a washable marker.

3 Using the paper as a template, cut out the fabric. Cut the required amount according to the pattern.

4 For all fur fabrics, shake the excess fuzz away.

cutting layout:

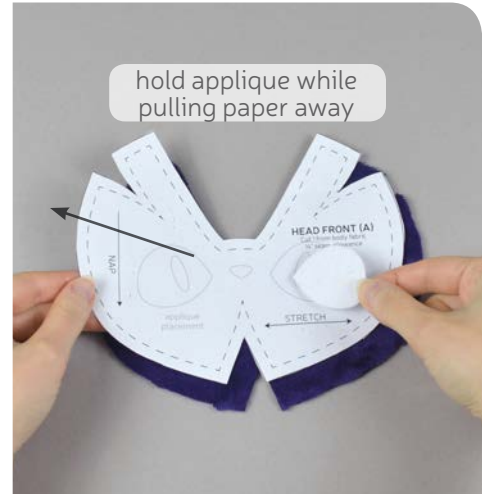


BEFORE YOU BEGIN:

- Briefly read the project instructions so you know what to expect.
- If desired, mark the cut fabric pieces with the markings and symbols from the pattern. Or wait until the applicable step before transferring.
- Note that a 1/4" seam allowance is used throughout the project.

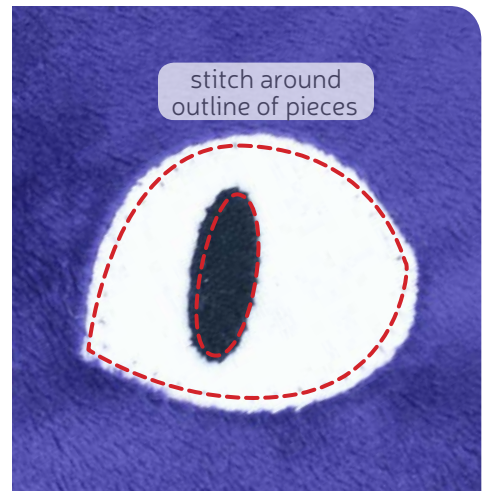
sew desu ne?

| WWW.CHOLYKNIGHT.COM |



1. PREPARE THE FACE APPLIQUE

- Grab your fusible web and trace all the applique pieces you want onto the smooth (paper) side. You should have at least two eyes, two pupils, and a nose.
- Fuse the bumpy (adhesive) side onto the wrong side of your applique fabric. The eyes should go on white, the pupils on black, and the nose on pink.
- Cut out the eyes and arrange them on the **HEAD FRONT (A)** piece. Set your paper pattern on top of the fabric piece (right sides up). Align the eye piece on top where the placement markings are. Then carefully pull the paper pattern away while holding the applique piece in place.

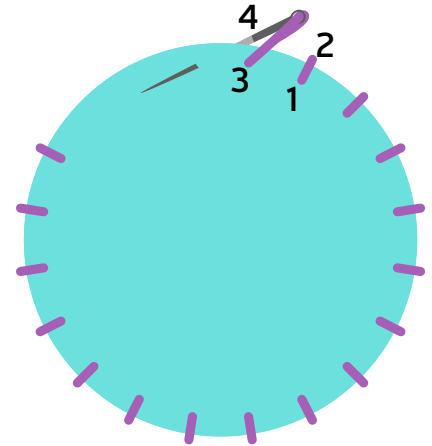
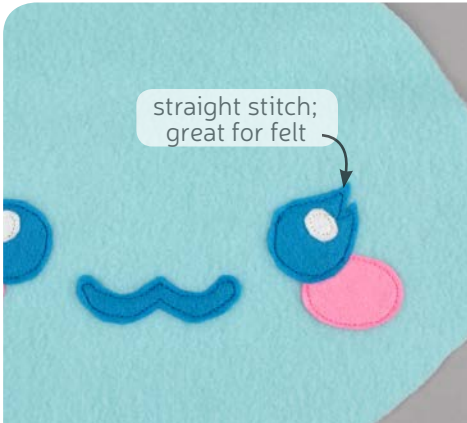


2. FUSE THE APPLIQUE

- Fuse the **eye** piece in place with your iron. Use a press cloth if you're using a polyester or fuzzy fabric like minky. You'll notice the eyes tilt down -- that's okay. They'll rotate back up when the upper dart is sewn.
- Next, move onto the smaller pieces: the **pupils** and **nose**. Fuse them the same way as you did the eyes, using the paper pattern and photos as a guide.
- If you used heavy duty fusible web, you can keep the pieces fused without sewing, or you can sew them in place a number of ways. I've used a zigzag stitch here.
 - Refer to the next step for some other applique options.

sew desu ne?

| WWW.CHOLYKNIGHT.COM |



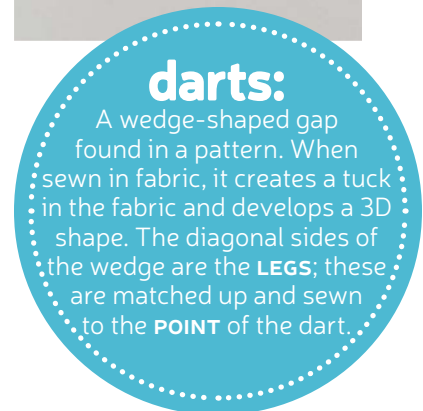
2a. OTHER APPLIQUE OPTIONS

- Other good options for applique include a straight stitch, which involves sewing around the edge of the applique pieces with a straight stitch using matching thread -- about 1/8" in from the edge.
- You can also applique by hand; I prefer a whipstitch. Thread a hand-sewing needle with some matching thread and knot it. Bring the thread up from the back of the project; about 1/8" in from the edge of the applique shape. Bring it down perpendicular from the curve, just outside of the applique shape. This completes one stitch.
- For the next stitch, bring the needle back up about 1/8" away from the previous stitch and 1/8" in from the edge just as in the first stitch. Once again, bring it down just outside the applique shape. Continue this way until you've sewn around the shape.



3. SEW THE DARTS

- Locate the open wedges found on the top and bottom center of the **HEAD FRONT (A)** piece -- these are the **darts**. To sew them, start by folding the front piece in half along the point of the dart and match up the slanted lines that make the wedge shape.
- Sew the **bottom dart** by starting at the opening and moving down to the point. Sew the **top dart** by pivoting at the corner and running off the edge. This will give the nose a little point.
- Clip the seam allowance at the corner so the face turns easier.
- Turn the face right side out. The upper side darts will be sewn next with the ears.



sew desu ne?

| WWW.CHOLYKNIGHT.COM |



4. SEW THE EARS

- a. Grab your **EAR** pieces (B). Take one from your inner ear fabric and one from your main body fabric. Line them up with right sides facing and raw edges matching up.
- b. Sew them together along the long curved edge. Leave the straight edge free for turning right side out.
- c. Turn the ear right side out. Repeat with the remaining two ear pieces for two complete ears total. Place both ears on your work surface with the inner ear fabric facing up. Use the paper pattern as a guideline to find the clipping line for the ears. Clip the base of the ear along this line on both ears. Your ear will bend along this clip later.



5. ALIGN THE EARS

- a. Grab your **HEAD FRONT** piece (A) from before. The small open wedges found at the top are **darts**. Instead of sewing them like usual, the edges of the ears will be sewn into the darts for a more 3D finished look.
- b. Place the clipped end of the ear along the edge of the dart with the inner ear fabric facing down.

sew desu ne?

| WWW.CHOLYKNIGHT.COM |



6. ATTACH THE EAR CORNER

- a. Fold the rest of the ear out of the way (along the clipped part). The small corner should now be fully aligned within the dart, $\frac{1}{4}$ " away from the top (for the seam allowance). Fold the rest of the **HEAD FRONT** over the corner of the **EAR**. This will sandwich the ear inside the dart. Match up the dart edges as you would with a typical dart.
- b. Sew the darts by starting at the opening and moving down to the point. When sewing the point, try to blend the seam in with the fold so it makes a smooth transition and a rounder finished plush. Repeat with your remaining **EAR** piece and the other **head dart**. When complete both ears should be secured into the head through just the corners.
- c. Check your seam when complete to be sure the ear is secure and there are no holes.

TIP:

If this step is too difficult for you, you can skip sewing the ear in the dart. Instead:

1. Sew the darts as usual without the ear inside.
2. Fold the ear along the clipping line instead of cutting it.
3. Baste the folded ears to the top of the head, starting at the dart seam.



7. ATTACH THE EAR BASE

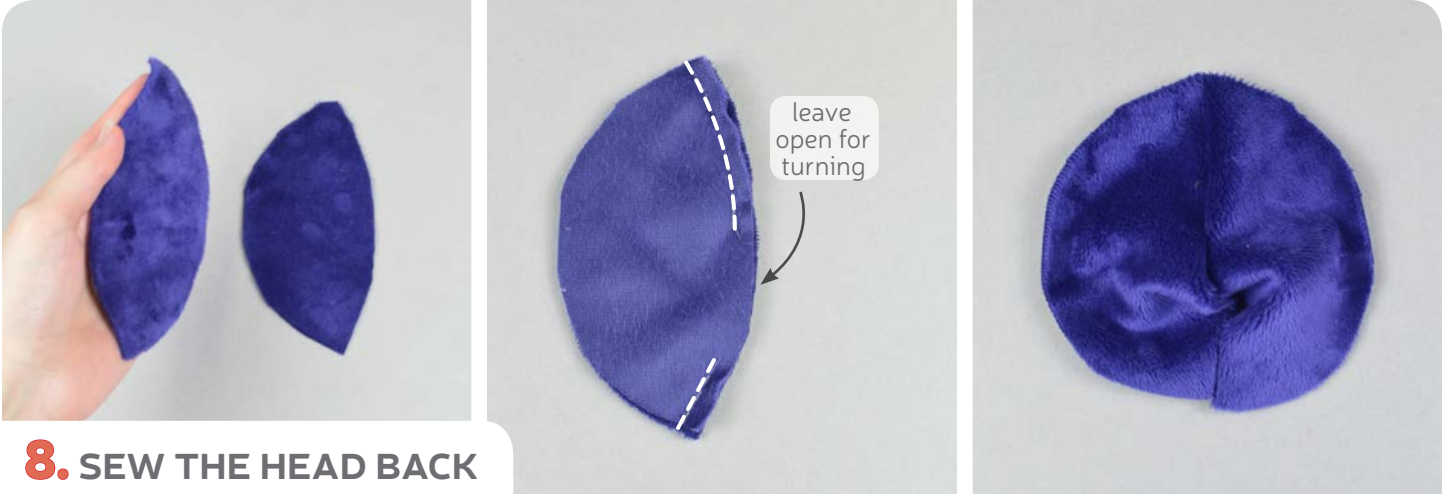
- a. Fold the free edge of the ear around the top of the **HEAD FRONT**. The open edge of the ear should align with the side of the head front.
- b. Baste the ear to the head front within the seam allowance to hold it for future steps.
- c. When complete, the ears should make a nice 3D shape!

basting:

A form of temporary sewing meant to hold pieces in place. A long stitch length is often used for this reason. The finished result is not meant to be seen and sometimes is even removed later (depending on your project).

sew desu ne?

| WWW.CHOLYKNIGHT.COM |



8. SEW THE HEAD BACK

- Grab your two **HEAD BACK** pieces (C). Align them together with right sides facing and raw edges matching up.
- If you haven't already, locate the **opening for turning** markings found on the paper pattern. Transfer them over to the wrong side of the fabric. Sew along this edge of the **HEAD BACK** pieces only, but be sure to leave the opening for turning that you marked.
- Open up your **HEAD BACK** piece.

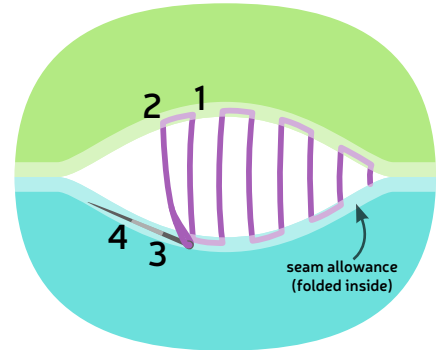
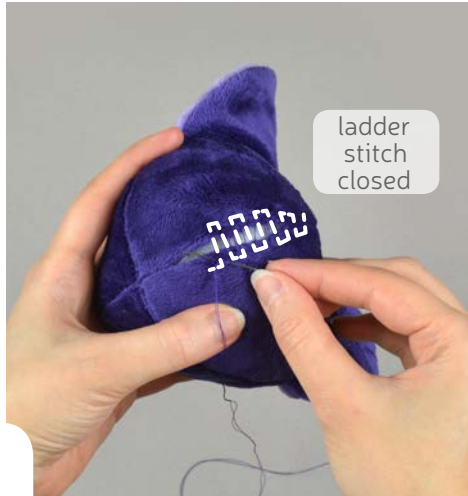
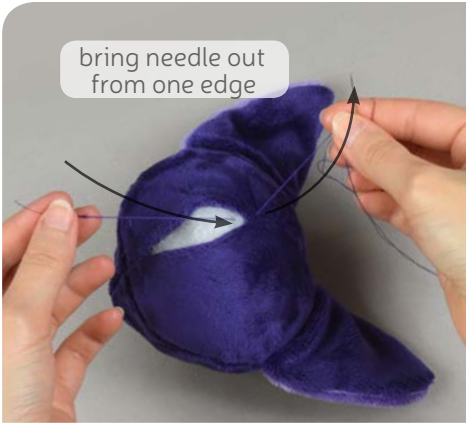


9. SEW THE HEAD

- Grab the **HEAD FRONT** piece you have so far. Align it to the head back with right sides facing. The **back seam** should match up with the **center top and bottom dart** on the front.
- Sew around the perimeter of the head completely.
- Turn the head right side out through the opening you left in the back. Stuff the head firmly with stuffing. Focus most of it on the face area until the nose pops out and there are no wrinkles in the fabric. After the face looks full, fill the rest of the head.

sew desu ne?

| WWW.CHOLYKNIGHT.COM |



10. CLOSE UP THE HEAD

- a. Once the plush is stuffed, make sure the seam allowances in the opening are tucked inside and prepare to ladder stitch it closed. Thread a hand-sewing needle and knot it at the end. Insert the needle from the inside of the opening and out of the plush near one edge of the opening. This will leave the knot inside the plush.
- b. Continue from here doing a ladder stitch. Take a 1/8" stitch into the fold of one side of the opening, then go across and take another. Keep going down the opening until you reach the end.

When you're finished, stitch a knot into the end of the seam. Then insert the needle near the finished knot and out of the plush about 1-2" away.

Pull the thread through and hold it taut while snipping the thread. The excess thread should sink back inside the plush -- all hidden!



11. SEW THE BODY FRONT

- a. Grab your two **BODY FRONT** pieces (E). Align them with right sides facing and raw edges matching up.
- b. Sew the pieces together along the inner curved edge. Leave the outer curve alone -- this is for the legs next.
- c. When complete, open up the pieces as shown.

sew desu ne?

| WWW.CHOLYKNIGHT.COM |



- a. Grab your **BODY BACK** pieces (D). Take one and sew the **dart** similar to previous darts. Fold it along the point to match up the slanted lines.
- b. Sew from the opening of the dart down to the point. Try to blend your stitching into the fold so the finished dart looks smooth and rounded.

12. SEW THE BODY BACK DARTS



13. SEW THE LEGS

- a. Next up is sewing the **legs**. This area is a little detailed, so you'll need to transfer the seam line from the paper pattern. Trim the paper along the dotted line in the small area between the legs. Use this as a template to trace onto the wrong side of both of your **BODY BACK** pieces (D).
- b. Take one of your body back pieces and align it over your **BODY FRONT** (E) so the area with the legs matches up. This area also has a **notch** on the paper pattern to help you align them.
- c. Sew the back to the front along this **notched edge**, following the seam line you traced.
 - *Be sure the body front is spread apart well and you're only sewing to one side of the body front. It's easy to accidentally catch the other side.*

Stop when you reach the bottom of the **body front seam** from step 11. This spot should line up with the **circle marking** on the paper pattern for the body back (for extra help).

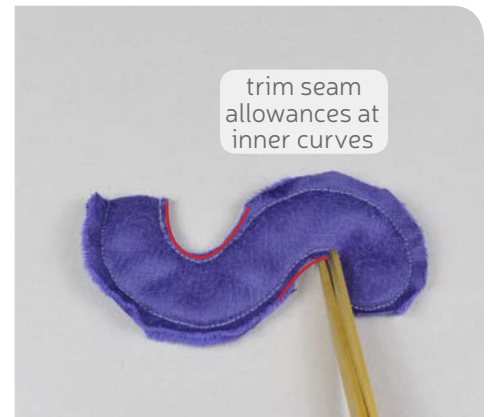
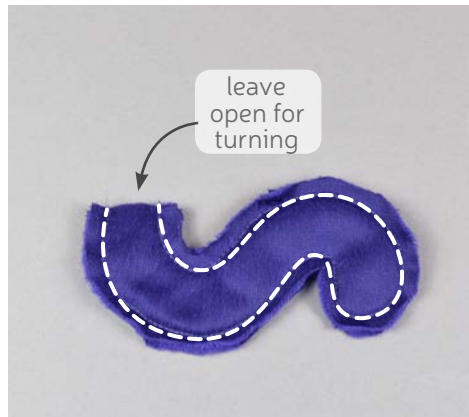
sew desu ne?

| WWW.CHOLYKNIGHT.COM |



- a. Repeat step 13 with your remaining body back piece on the other side of the **BODY FRONT**. When complete the **BODY BACK** should be attached on both sides with the body front attached in the middle.
- b. The back should still be open (beyond the **circle markings**). This is where the tail is going to be attached next.

14. SEW BOTH SIDES OF THE BODY



15. SEW THE TAIL

- a. Grab your **TAIL** pieces (F) and align them with right sides facing and raw edges matching up.
- b. Sew them together around the curved edge. Leave the short straight edge free for turning the tail right side out.
- c. Trim the seam allowance at the inner curves, this will help increase flexibility when the tail is turned next.

sew desu ne?

| WWW.CHOLYKNIGHT.COM |



16. BASTE THE TAIL

- Turn the **TAIL** right side out through the opening at the end. Stuff it firmly with stuffing. If you have hemostats they're especially helpful here.
- If you haven't already, locate the **tail placement lines** found on the paper pattern for the **BODY BACK** (D). Align the open end of the tail within these lines so the tail is pointing up.
- Baste the tail to the body back within these lines.



17. TURN THE BODY

- Align the back edges of the **BODY BACK** pieces (D) so right sides are facing, raw edges match up, and the **TAIL** is trapped inside. Start at the **circle marking** (from back in step 13) and work your way up to the neck.
- Before turning the body, clip the fabric between the **front** and **back legs**. Clip all the way up to every corner so it turns cleanly and with good flexibility.
- Turn the body right side out through the opening in the neck.

sew desu ne?

| WWW.CHOLYKNIGHT.COM |



18. SEW THE PELLETT POUCH

- Grab your **PELLET POUCH (G)** pieces from your scrap fabric. Align the two pieces together with either side facing (doesn't matter). Sew the pieces together around the edge, leaving a 1-2" opening (also marked on the paper pattern) for filling the pouch.
- Get your poly pellets and a funnel (I prefer a spoon, but both work). Fill the pouch with poly pellets until it's not quite full.
- Stitch the pouch closed by hand for extra safety using a back stitch, or take it to your machine. Stitch it closed very slowly, using only the hand wheel if necessary. Sewing over a pellet will very likely break a needle.



19. STUFF THE BODY

- Stuff the **PELLET POUCH** into the body so it rests at the bottom back. This will help offset the weight of the head.
- Next, stuff the **front legs** gradually. Use small balls of stuffing and work your way from the tip of the foot upward.
- Then stuff the **back legs**, starting with small balls of stuffing in the feet, then filling out the haunches.

sew desu ne?

| WWW.CHOLYKNIGHT.COM |



20. CLOSE UP THE BODY

- Finally, stuff the rest of the body, working from the bottom up to the neck.
- Thread a hand sewing needle with thread and knot the end. Sew a long gathering stitch around the opening of the **BODY**, about ¼" away from the edge.
- Once finished, pull at the thread to gather the fabric and cinch up the opening. Sew a few knots at this opening to hold it closed. If you have a lot of thread left, consider leaving it attached for adding to the head.

gathering:
The process of shortening the length of a piece of fabric by sewing long stitches through it. When the thread is pulled, it forms small folds that ruffle the fabric.

gathering stitch:
A long version of the running stitch, which is a stitch done by weaving the needle in and out of a length of fabric going along a line. The long stitches (about ¼"-½" long) gather the fabric when pulled later.

- Align the **HEAD** over the **BODY** so they're both facing forward. The **back seam of the head** should also match up with the **back seam on the body**. Ladder stitch the head to the body, going around the opening in the neck. Stitch a wide circle to ensure the neck is secure and not wobbly.

→ *TIP: take big basting stitches for the first pass to make sure the head placement is right. Check to see that you like it, then go around again with neater, tinier stitches for the second pass.*

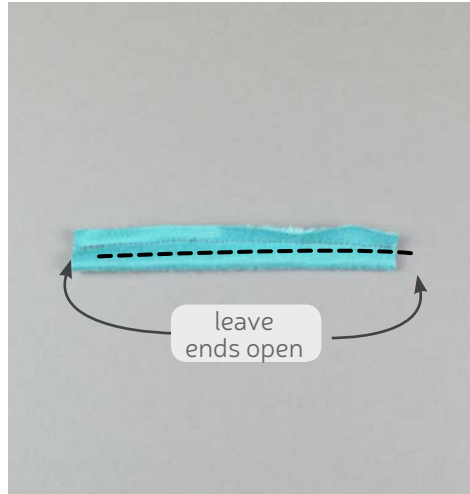


21. ATTACH THE HEAD

- For an easy finish, tie your ribbon around the neck of your cat! If you want to make your own bow, see the steps to follow.

sew desu ne?

| WWW.CHOLYKNIGHT.COM |



22. SEW THE COLLAR

- Grab your **COLLAR** piece (H). Fold it in half lengthwise with right sides facing. This will make an even skinnier rectangle.
- Sew the collar along the long raw edge. This should create a tube. Leave the short straight ends free for turning the collar next.
- Turn the collar right side out through the opening using either a safety pin or a bodkin.

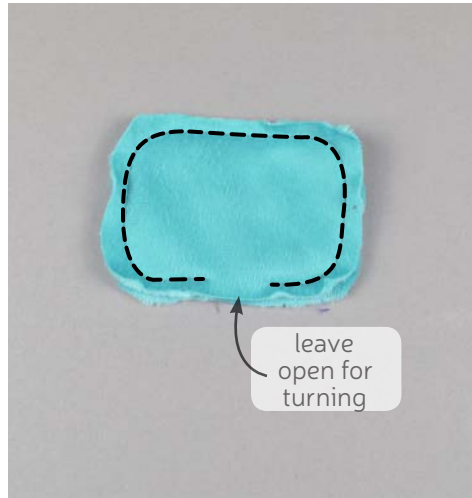


23. ATTACH THE COLLAR

- Wrap the **COLLAR** around the plush so far and overlap the ends together in the front.
- Thread a hand sewing needle and knot the end. Stitch across the edge of the collar with a whip stitch or similar simple stitch you're comfortable with.

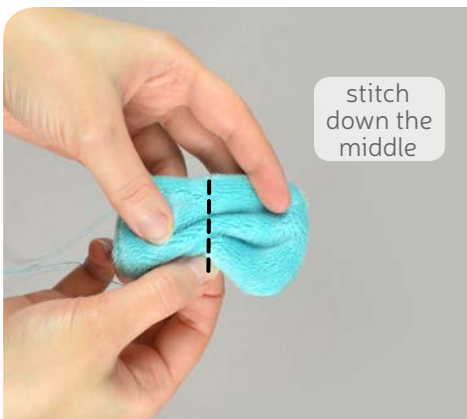
sew desu ne?

| WWW.CHOLYKNIGHT.COM |



24. SEW THE BOW

- a. Grab your **BOW** pieces (1). Align them with right sides facing and raw edges matching up.
- b. Sew them together all around the perimeter. Leave an opening along the middle of one edge (the paper pattern as a guide for extra help) for turning the piece.
- c. Turn the bow right side out through the opening.

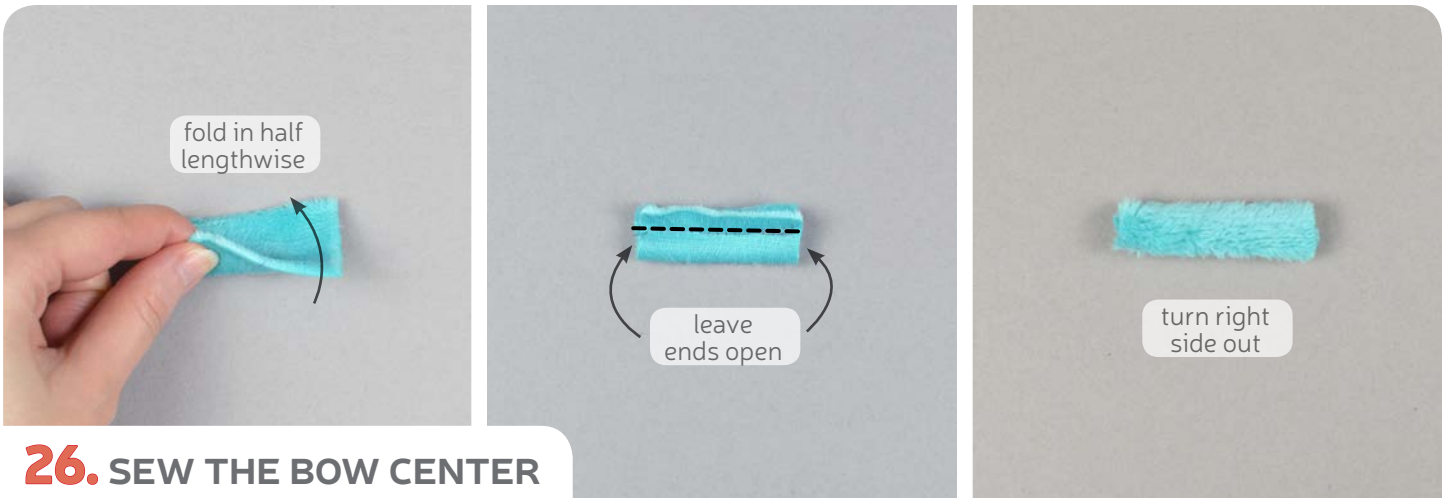


- a. Take your threaded hand sewing needle and stitch down the center of the **BOW**. Weave the needle in and out with large gathering stitches to cinch up the bow.
- b. Wrap the thread around the middle of the bow so it's tight. Sew a few knots into the bow to secure the thread.

25. CINCH UP THE BOW

sew desu ne?

| WWW.CHOLYKNIGHT.COM |



26. SEW THE BOW CENTER

- Grab your **BOW CENTER** piece (J). Fold it in half lengthwise with right sides facing so it makes an even skinnier strip.
- Sew the piece along the long edge. Leave the short straight edges free so the completed piece makes a tube.
- Turn the piece right side out using a safety pin, a bodkin, or hemostats.



- Take the turned **BOW CENTER** (J) and wrap it around the center of your **BOW**.
- Overlap the ends in the back of the bow and whip stitch the ends of the bow center to complete the bow.

27. ATTACH THE BOW CENTER

sew desu ne?

| WWW.CHOLYKNIGHT.COM |

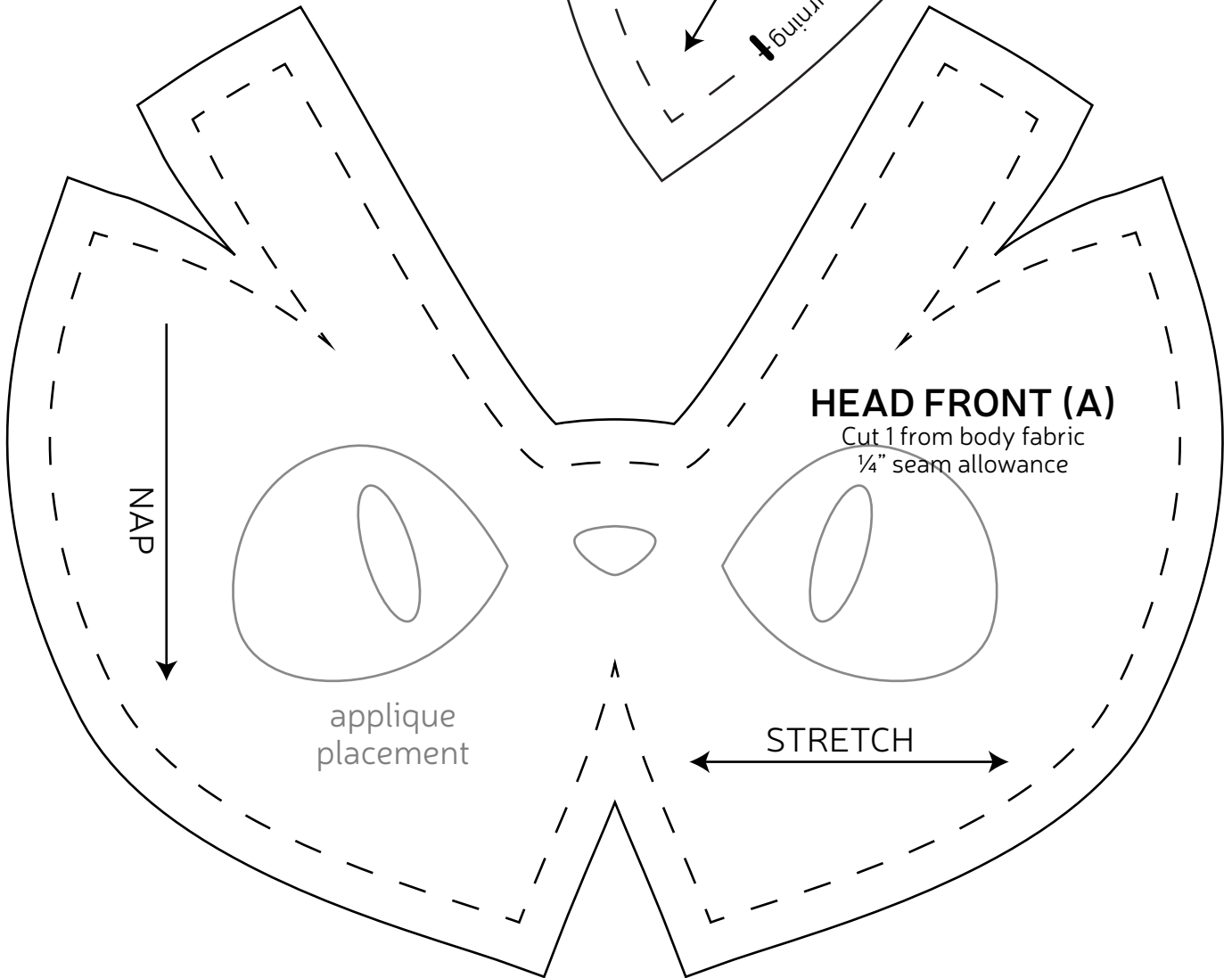
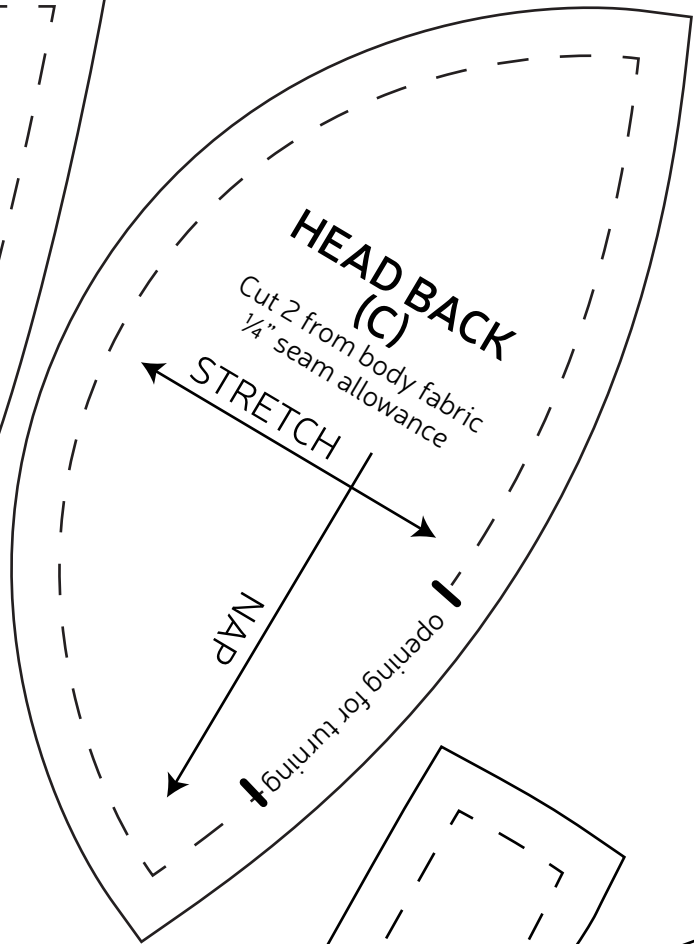
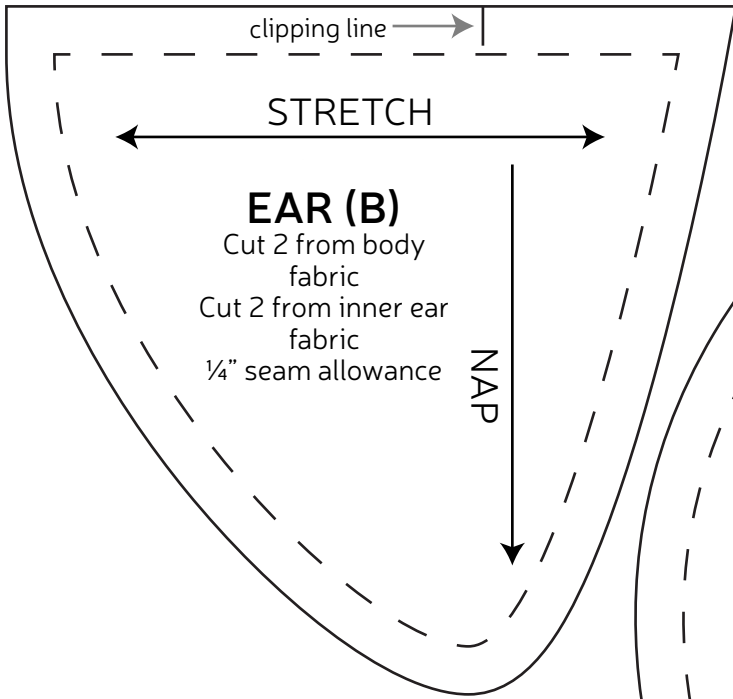


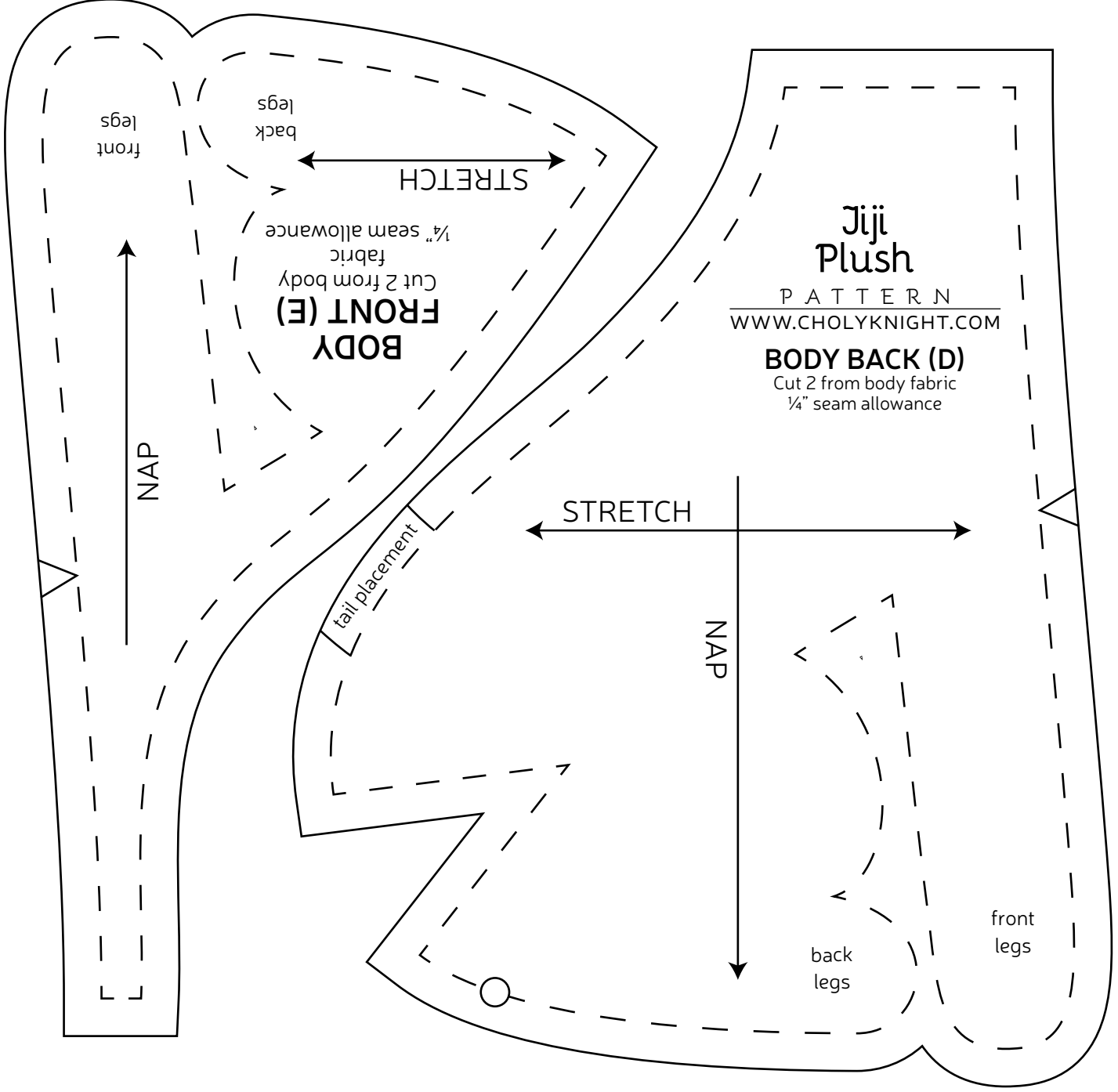
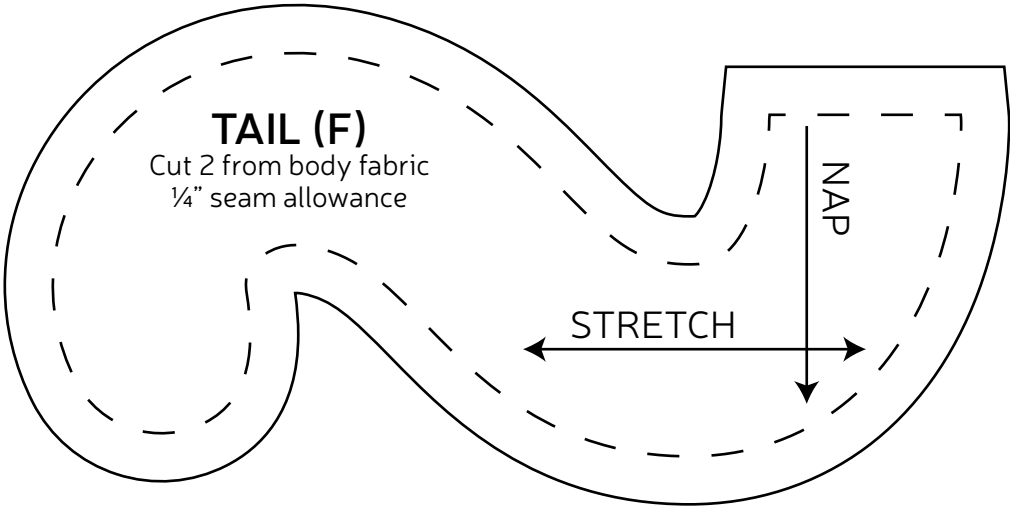
- a. Take your finished **BOW** and align the back of it with the front of the **COLLAR**. This should match up the sides with the hand stitching.
- b. Sew the bow to the collar where they meet using a ladder stitch.

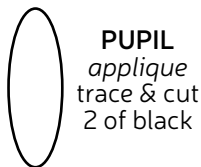
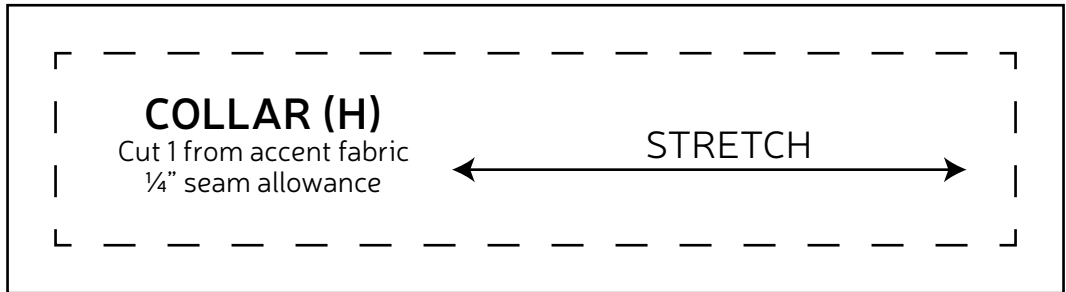
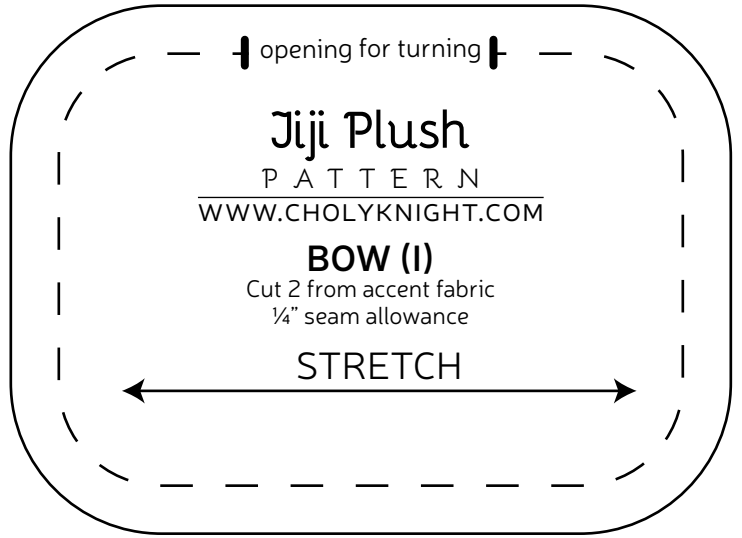
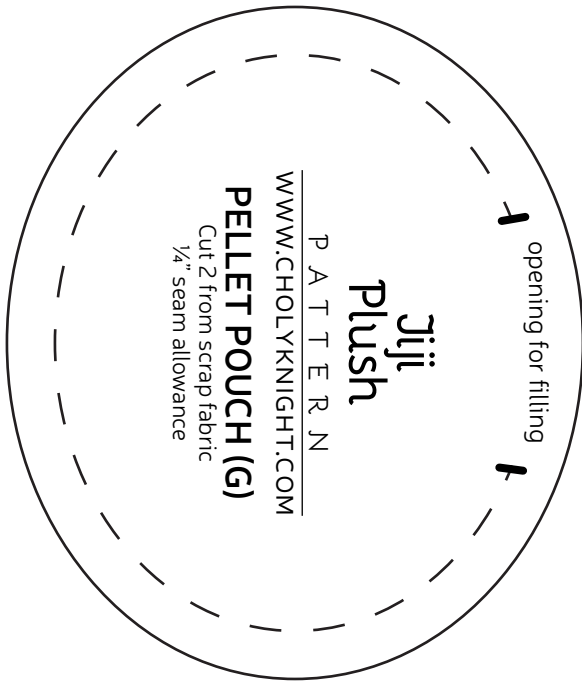
28. ATTACH THE BOW

congrats!
this completes
your plush! Now
give it a big
hug!





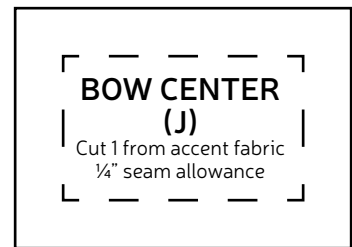




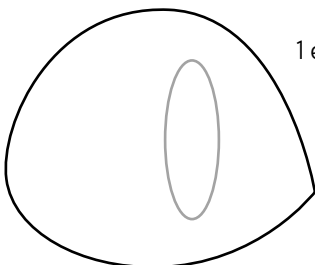
PUPIL
applique
 trace & cut
 2 of black



NOSE
applique
 trace & cut
 1 of pink



**BOW CENTER
 (J)**
 Cut 1 from accent fabric
 1/4" seam allowance



EYE
applique
 trace & cut
 1 each of white

